



Datasheet for ABIN2778286  
**anti-TRIM13 antibody (Middle Region)**



[Go to Product page](#)

5 Images

Overview

Quantity:	100 µL
Target:	TRIM13
Binding Specificity:	Middle Region
Reactivity:	Human, Mouse, Rat, Cow, Dog, Rabbit, Guinea Pig, Horse
Host:	Rabbit
Clonality:	Polyclonal
Conjugate:	This TRIM13 antibody is un-conjugated
Application:	Western Blotting (WB), Immunohistochemistry (IHC)

Product Details

Immunogen:	The immunogen is a synthetic peptide directed towards the middle region of human RFP2
Sequence:	DTLETSKRKS LQLLTKDSDK VKEFFEKLQH TLDQKKNEIL SDFETMKLAV
Predicted Reactivity:	Cow: 100%, Dog: 93%, Guinea Pig: 100%, Horse: 100%, Human: 100%, Mouse: 93%, Rabbit: 100%, Rat: 100%
Characteristics:	This is a rabbit polyclonal antibody against RFP2. It was validated on Western Blot and immunohistochemistry.
Purification:	Affinity Purified

Target Details

Target:	TRIM13
---------	--------

## Target Details

---

Alternative Name:	RFP2 ( <a href="#">TRIM13 Products</a> )
Background:	<p>The protein encoded by the RFP2 gene is a member of the tripartite motif (TRIM) family. The TRIM motif includes three zinc-binding domains, a RING, a B-box type 1 and a B-box type 2, and a coiled-coil region. The protein localizes to cytoplasmic bodies near the nucleus, but its function is unknown. The gene is located on chromosome 13 within the minimal deletion region for B-cell chronic lymphocytic leukemia.</p> <p>Alias Symbols: CAR, LEU5, RFP2, DLEU5, RNF77</p> <p>Protein Interaction Partner: GMCL1, IKBKG, TRIM13, VCP, UBC, DDOST, CALM1, ATP2A2, UBE2D2, ZFYVE1, SQSTM1, ROBO2, CACNA1C, ARHGDI1, MDM2, AKT1,</p> <p>Protein Size: 410</p>
Molecular Weight:	47 kDa
Gene ID:	10206
NCBI Accession:	<a href="#">NM_001007278</a> , <a href="#">NP_001007279</a>
UniProt:	<a href="#">Q5UBW0</a>

## Application Details

---

Application Notes:	Optimal working dilutions should be determined experimentally by the investigator.
Comment:	Antigen size: 410 AA
Restrictions:	For Research Use only

## Handling

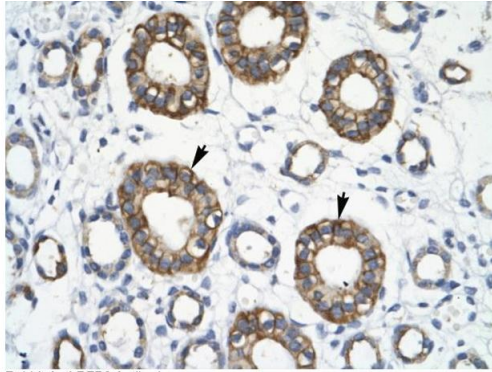
---

Format:	Liquid
Concentration:	Lot specific
Buffer:	Liquid. Purified antibody supplied in 1x PBS buffer with 0.09 % (w/v) sodium azide and 2 % sucrose.
Preservative:	Sodium azide
Precaution of Use:	This product contains Sodium azide: a POISONOUS AND HAZARDOUS SUBSTANCE which should be handled by trained staff only.
Handling Advice:	Avoid repeated freeze-thaw cycles.
Storage:	-20 °C

## Handling

Storage Comment: For short term use, store at 2-8°C up to 1 week. For long term storage, store at -20°C in small aliquots to prevent freeze-thaw cycles.

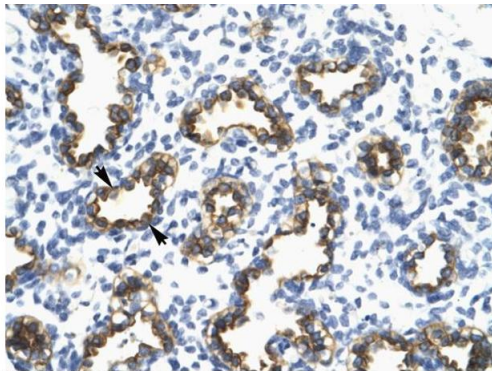
## Images



Rabbit Anti-RFP2 Antibody  
Catalog Number: ARP34143  
Lot Number: QC3964  
Paraffin Embedded Tissue: Human Kidney  
Cells with Positive label: Epithelial cells of collecting tubule(Indicated with Arrows)  
Antibody Concentration: 4.0-8.0 µg/ml  
Magnification: 400X

### Immunohistochemistry

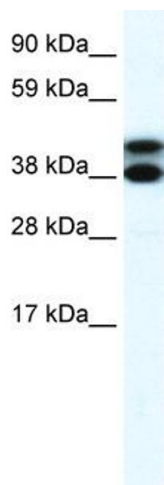
**Image 1.** Human kidney



Rabbit Anti-RFP2 Antibody  
Catalog Number: ARP34143  
Lot Number: QC3964  
Paraffin Embedded Tissue: Human Lung  
Cells with Positive label: Alveolar cells (Indicated with Arrows)  
Antibody Concentration: 4.0-8.0 µg/ml  
Magnification: 400X

### Immunohistochemistry

**Image 2.** Human Lung



### Western Blotting

**Image 3.** WB Suggested Anti-RFP2 Antibody Titration:  
0.125µg/ml ELISA Titer: 1:62500 Positive Control: Human Lung

Please check the [product details page](#) for more images. Overall 5 images are available for ABIN2778286.