



[Go to Product page](#)

Datasheet for ABIN2778291  
**anti-ATF2 antibody (C-Term)**

6 Images

Overview

Quantity:	100 µL
Target:	ATF2
Binding Specificity:	C-Term
Reactivity:	Human, Mouse, Rat, Cow, Rabbit, Dog, Horse, Guinea Pig
Host:	Rabbit
Clonality:	Polyclonal
Conjugate:	This ATF2 antibody is un-conjugated
Application:	Western Blotting (WB), Immunohistochemistry (IHC)

Product Details

Immunogen:	The immunogen is a synthetic peptide directed towards the C terminal region of human ATF2
Sequence:	LRNEVAQLKQ LLLAHKDCPV TAMQKKSGYH TADKDDSSSED ISVPSSPHTE
Predicted Reactivity:	Cow: 100%, Dog: 100%, Guinea Pig: 93%, Horse: 100%, Human: 100%, Mouse: 100%, Rabbit: 100%, Rat: 100%
Characteristics:	This is a rabbit polyclonal antibody against ATF2. It was validated on Western Blot and immunohistochemistry.
Purification:	Protein A purified

Target Details

Target:	ATF2
---------	------

## Target Details

---

Alternative Name: [ATF2 \(ATF2 Products\)](#)

Background: ATF2 encodes a transcription factor that is a member of the leucine zipper family of DNA binding proteins. This protein binds to the cAMP-responsive element (CRE), an octameric palindrome. The protein forms a homodimer or heterodimer with c-Jun and stimulates CRE-dependent transcription. The protein is also a histone acetyltransferase (HAT) that specifically acetylates histones H2B and H4 in vitro, thus it may represent a class of sequence-specific factors that activate transcription by direct effects on chromatin components.

Alias Symbols: HB16, CREB2, TREB7, CRE-BP1

Protein Interaction Partner: MAPK10, MAPK9, MAPK8, MAPK1, SUMO1, KIFC3, FOS, MAPK14, EXOSC8, JUN, CREBBP, ATF2, CEBPG, BACH1, ATF4, ATF3, BATF3, DDIT3, BATF, FOSL1, H2AFY, RB1, GAPDH, NME2P1, TUBB, SFXN1, RAB2B, TMX1, GRPEL1, COLGALT1, AHNAK, SQRD, RTN4, APMAP, C19orf10, RAB14, ERO1

Protein Size: 505

---

Molecular Weight: 55 kDa

---

Gene ID: 1386

---

NCBI Accession: [NM\\_001880](#), [NP\\_001871](#)

---

Pathways: [MAPK Signaling](#), [RTK Signaling](#), [Thyroid Hormone Synthesis](#), [Activation of Innate immune Response](#), [Chromatin Binding](#), [Myometrial Relaxation and Contraction](#), [Synaptic Membrane](#), [Tube Formation](#), [Toll-Like Receptors Cascades](#)

## Application Details

---

Application Notes: Optimal working dilutions should be determined experimentally by the investigator.

---

Comment: Antigen size: 505 AA

---

Restrictions: For Research Use only

## Handling

---

Format: Liquid

---

Concentration: Lot specific

---

Buffer: Liquid. Purified antibody supplied in 1x PBS buffer with 0.09 % (w/v) sodium azide and 2 % sucrose.

---

Preservative: Sodium azide

---

## Handling

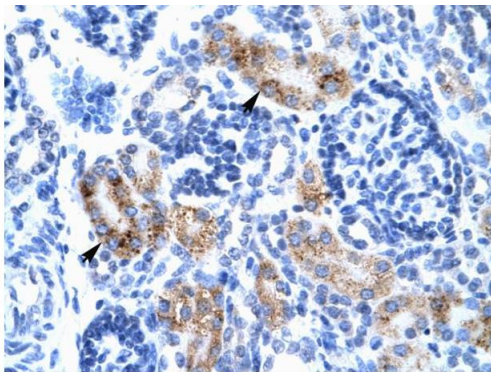
Precaution of Use:	This product contains Sodium azide: a POISONOUS AND HAZARDOUS SUBSTANCE which should be handled by trained staff only.
Handling Advice:	Avoid repeated freeze-thaw cycles.
Storage:	-20 °C
Storage Comment:	For short term use, store at 2-8°C up to 1 week. For long term storage, store at -20°C in small aliquots to prevent freeze-thaw cycles.

## Images



### Western Blotting

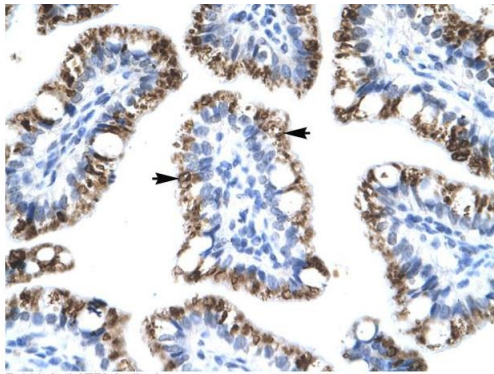
**Image 1.** WB Suggested Anti-ATF2 Antibody Titration:  
1.25ug/ml Positive Control: Jurkat cell lysate



Rabbit Anti-ATF2 Antibody  
Catalog Number: ARP34151  
Lot Number: QC3514  
Paraffin Embedded Tissue: Human Kidney  
Cells with Positive label: Epithelial cells of renal tubule (Indicated with Arrows)  
Antibody Concentration: 4.0-8.0 µg/ml  
Magnification: 400X

### Immunohistochemistry

**Image 2.** Human kidney



Rabbit Anti-ATF2 Antibody  
Catalog Number: ARP34151  
Lot Number: QC3514  
Paraffin Embedded Tissue: Human Intestine  
Cells with Positive label: Epithelial cells of intestinal villus(Indicated with Arrows)  
Antibody Concentration: 4.0-8.0 µg/ml  
Magnification: 400X

### Immunohistochemistry

**Image 3.** Human Intestine

Please check the [product details page](#) for more images. Overall 6 images are available for ABIN2778291.