

Datasheet for ABIN2778293
anti-Atrophin 1 antibody (N-Term)

3 Images

[Go to Product page](#)

Overview

Quantity:	100 µL
Target:	Atrophin 1 (ATN1)
Binding Specificity:	N-Term
Reactivity:	Human, Mouse, Rat, Rabbit, Cow, Dog, Horse, Pig
Host:	Rabbit
Clonality:	Polyclonal
Conjugate:	This Atrophin 1 antibody is un-conjugated
Application:	Western Blotting (WB)

Product Details

Immunogen:	The immunogen is a synthetic peptide directed towards the N terminal region of human ATN1
Sequence:	VSTSSSDGKA EKSRTAKKA RVEEASTPKV NKQGRSEEIS ESESEETNAP
Predicted Reactivity:	Cow: 93%, Dog: 93%, Horse: 93%, Human: 100%, Mouse: 86%, Pig: 93%, Rabbit: 100%, Rat: 93%
Characteristics:	This is a rabbit polyclonal antibody against ATN1. It was validated on Western Blot using a cell lysate as a positive control.
Purification:	Affinity Purified

Target Details

Target:	Atrophin 1 (ATN1)
Alternative Name:	ATN1 (ATN1 Products)

Target Details

Background:	<p>Dentatorubral pallidoluysian atrophy is a rare neurodegenerative disorder characterized by cerebellar ataxia, myoclonic epilepsy, choreoathetosis, and dementia. The disorder is related to the expansion of a trinucleotide repeat within ATN1. The protein includes a serine repeat and a region of alternating acidic and basic amino acids, as well as the variable glutamine repeat. Alternative splicing results in two transcripts variants that encode the same protein.</p> <p>Dentatorubral pallidoluysian atrophy is a rare neurodegenerative disorder characterized by cerebellar ataxia, myoclonic epilepsy, choreoathetosis, and dementia. The disorder is related to the expansion of a trinucleotide repeat within this gene. The encoded protein includes a serine repeat and a region of alternating acidic and basic amino acids, as well as the variable glutamine repeat. Alternative splicing results in two transcripts variants that encode the same protein.</p> <p>Alias Symbols: B37, D12S755E, DRPLA, NOD, HRS</p> <p>Protein Interaction Partner: WWOX, Dlg4, SIAH1, HINFP, LRP2, RBFOX1, EFEMP2, NOC2L, RCHY1, ZMYND8, RBFOX2, KAT6B, SSPO, RAD54L2, ZSWIM8, WDR5, WWP2, WWP1, RBPMS, SPAG5, FBLN5, BAIAP2, PSME3, CBFA2T2, CHRD, NCK2, LTBP4, RBM10, KAT6A, BAG6, PRRC2A, TRIP6, TEP1, SLIT1, SIAH2, PSMA3, PLS</p> <p>Protein Size: 1190</p>
-------------	---

Molecular Weight:	125 kDa
-------------------	---------

Gene ID:	1822
----------	------

NCBI Accession:	NM_001940 , NP_001931
-----------------	---

UniProt:	P54259
----------	------------------------

Application Details

Application Notes:	Optimal working dilutions should be determined experimentally by the investigator.
--------------------	--

Comment:	Antigen size: 1190 AA
----------	-----------------------

Restrictions:	For Research Use only
---------------	-----------------------

Handling

Format:	Liquid
---------	--------

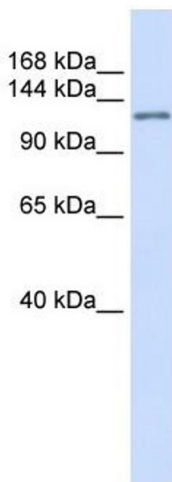
Concentration:	Lot specific
----------------	--------------

Buffer:	Liquid. Purified antibody supplied in 1x PBS buffer with 0.09 % (w/v) sodium azide and 2 % sucrose.
---------	---

Handling

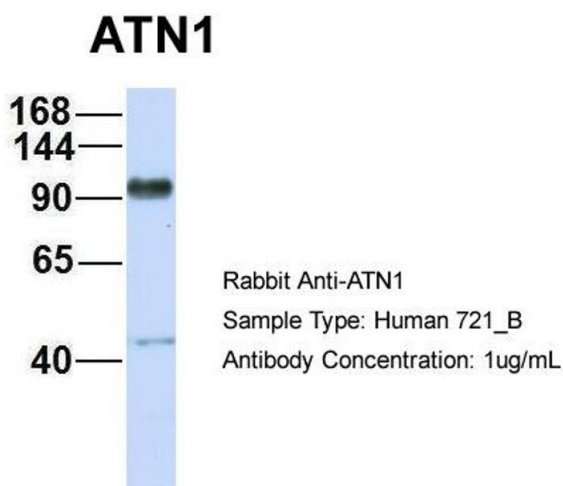
Preservative:	Sodium azide
Precaution of Use:	This product contains Sodium azide: a POISONOUS AND HAZARDOUS SUBSTANCE which should be handled by trained staff only.
Handling Advice:	Avoid repeated freeze-thaw cycles.
Storage:	-20 °C
Storage Comment:	For short term use, store at 2-8°C up to 1 week. For long term storage, store at -20°C in small aliquots to prevent freeze-thaw cycles.

Images



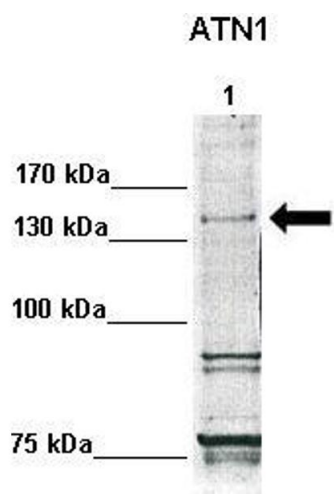
Western Blotting

Image 1. WB Suggested Anti-ATN1 Antibody Titration: 0.2-1 ug/ml ELISA Titer: 1:1562500 Positive Control: Human Placenta



Western Blotting

Image 2. Host: Rabbit Target Name: ATN1 Sample Type: 721_B Antibody Dilution: 1.0ug/ml There is BioGPS gene expression data showing that ATN1 is expressed in 721_B



Western Blotting

Image 3. WB Suggested Anti-ATN1 Antibody Positive Control: Lane1: 30ug human fibroblasts Primary Antibody Dilution : 1:500 Secondary Antibody : Anti-rabbit-HRP Secondary Antibody Dilution : 1:1000 Submitted by: Anonymous