

Datasheet for ABIN2778297
anti-SIAH1 antibody (N-Term)[Go to Product page](#)

4 Images

Overview

Quantity:	100 µL
Target:	SIAH1
Binding Specificity:	N-Term
Reactivity:	Human, Mouse, Rat, Dog, Cow, Zebrafish (Danio rerio), Horse, Guinea Pig, Rabbit
Host:	Rabbit
Clonality:	Polyclonal
Conjugate:	This SIAH1 antibody is un-conjugated
Application:	Western Blotting (WB), Immunohistochemistry (IHC)

Product Details

Immunogen:	The immunogen is a synthetic peptide directed towards the N terminal region of human SIAH1
Sequence:	FTCLPAARTR KRKEMSRQTA TALPTGTSKC PPSQRPALT GTTASNNDLA
Predicted Reactivity:	Cow: 100%, Dog: 100%, Guinea Pig: 100%, Horse: 100%, Human: 100%, Mouse: 100%, Rabbit: 100%, Rat: 100%, Zebrafish: 86%
Characteristics:	This is a rabbit polyclonal antibody against SIAH1. It was validated on Western Blot using a cell lysate as a positive control.
Purification:	Protein A purified

Target Details

Target:	SIAH1
---------	-------

Target Details

Alternative Name:	SIAH1 (SIAH1 Products)
Background:	<p>SIAH1 is a protein that is a member of the seven in absentia homolog (SIAH) family. The protein is an E3 ligase and is involved in ubiquitination and proteasome-mediated degradation of specific proteins. The activity of this ubiquitin ligase has been implicated in the development of certain forms of Parkinson's disease, the regulation of the cellular response to hypoxia and induction of apoptosis. Alternative splicing results in several additional transcript variants, some encoding different isoforms and others that have not been fully characterized.</p> <p>Alias Symbols: SIAH1A</p> <p>Protein Interaction Partner: MX1, MAB21L1, KIFC3, KCNJ10, INHA, UBE2K, FLI1, EEF1D, PHC2, PHC1, CDC34, CAPG, BCL6, TRIM23, AQP1, PFKM, ZCCHC13, MTIF3, UPP2, MOB3C, SPATA4, PRR20A, HIST4H4, EXOC3-AS1, PTPMT1, RPS19BP1, SPATC1L, KATNAL1, TRIM7, GDPD5, ZBP1, KIAA1683, ARMC9, KIAA0319L,</p> <p>Protein Size: 313</p>
Molecular Weight:	35 kDa
Gene ID:	6477
NCBI Accession:	NM_001006610 , NP_001006611

Application Details

Application Notes:	Optimal working dilutions should be determined experimentally by the investigator.
Comment:	Antigen size: 313 AA
Restrictions:	For Research Use only

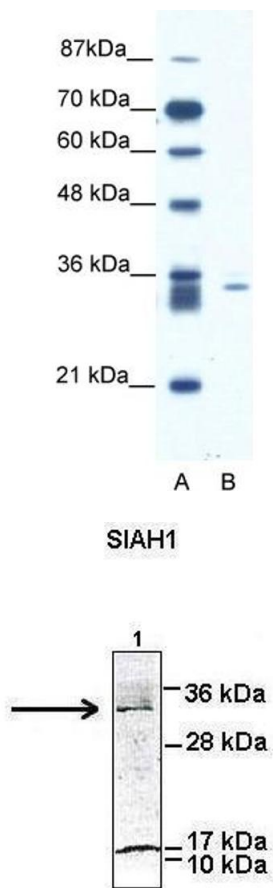
Handling

Format:	Liquid
Concentration:	Lot specific
Buffer:	Liquid. Purified antibody supplied in 1x PBS buffer with 0.09 % (w/v) sodium azide and 2 % sucrose.
Preservative:	Sodium azide
Precaution of Use:	This product contains Sodium azide: a POISONOUS AND HAZARDOUS SUBSTANCE which should be handled by trained staff only.
Handling Advice:	Avoid repeated freeze-thaw cycles.

Handling

Storage:	-20 °C
Storage Comment:	For short term use, store at 2-8°C up to 1 week. For long term storage, store at -20°C in small aliquots to prevent freeze-thaw cycles.

Images



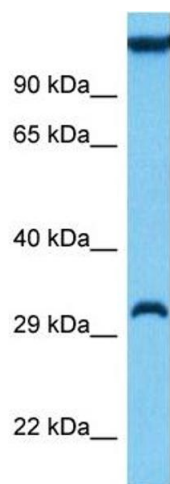
See Immunoblot 2 Data and Customer Feedback for more information

Western Blotting

Image 1. WB Suggested Anti-SIAH1 Antibody Titration: 1.25ug/ml ELISA Titer: 1:312500 Positive Control: Jurkat cell lysate

Western Blotting

Image 2. Researcher: Peter Brand & Dr. Oliver Kramer, Institute for Biochemistry and Biophysics, Center for Molecular Biomedicine, Friedrich-Schiller University Jena
Application: Western blotting
Species+tissue/cell type: Human embryonic kidney 293T
How many ug's of tissue/cell lysate run on the gel: 1:50 µg human HEK-293T cell lysate
Primary Antibody dilution: 1:0000
Secondary Antibody: Anti-rabbit-IgG
Secondary Antibody Dilution: 1:0000



Western Blotting

Image 3. Host: Mouse Target Name: SIAH1A Sample
Tissue: Mouse Liver Antibody Dilution: 1ug/ml

Please check the [product details page](#) for more images. Overall 4 images are available for ABIN2778297.