

Datasheet for ABIN2778301
anti-SMARCB1 antibody (N-Term)



[Go to Product page](#)

3 Images

Overview

Quantity:	100 µL
Target:	SMARCB1
Binding Specificity:	N-Term
Reactivity:	Human, Mouse, Rat, Cow, Dog, Guinea Pig, Horse
Host:	Rabbit
Clonality:	Polyclonal
Conjugate:	This SMARCB1 antibody is un-conjugated
Application:	Western Blotting (WB), Immunohistochemistry (IHC)

Product Details

Immunogen:	The immunogen is a synthetic peptide directed towards the N terminal region of human SMARCB1
Sequence:	RGSLYKRYPS LWRRLATVEE RKKIVASSHG KKT KPNTKDH GYTTLATSVT
Predicted Reactivity:	Cow: 100%, Dog: 100%, Guinea Pig: 100%, Horse: 100%, Human: 100%, Mouse: 100%, Rat: 100%
Characteristics:	This is a rabbit polyclonal antibody against SMARCB1. It was validated on Western Blot and immunohistochemistry.
Purification:	Affinity Purified

Target Details

Target:	SMARCB1
---------	---------

Target Details

Alternative Name:	SMARCB1 (SMARCB1 Products)
Background:	<p>The protein encoded by SMARCB1 is part of a complex that relieves repressive chromatin structures, allowing the transcriptional machinery to access its targets more effectively. The encoded nuclear protein may also bind to and enhance the DNA joining activity of HIV-1 integrase. SMARCB1 has been found to be a tumor suppressor, and mutations in it have been associated with malignant rhabdoid tumors.</p> <p>Alias Symbols: RDT, INI1, SNF5, Snr1, BAF47, RTPS1, Sfh1p, hSNFS, SNF5L1</p> <p>Protein Interaction Partner: UBC, SOX2, tat, EPAS1, TRA2A, NCSTN, SAP18, EIF4A3, ARID1A, DPF1, VTN, TOP2B, SON, SMARCE1, SMARCD3, SMARCD2, SMARCD1, SMARCC2, SMARCA4, SMARCA2, SMARCC1, ARID1B, HDAC2, APP, PHF10, UBD, COPS5, CUL3, TFAP4, CAND1, RB1CC1, UBB, CEBPB, UL114, UL44, CHFR, DP</p> <p>Protein Size: 385</p>
Molecular Weight:	44 kDa
Gene ID:	6598
NCBI Accession:	NM_003073 , NP_003064
UniProt:	Q12824

Application Details

Application Notes:	Optimal working dilutions should be determined experimentally by the investigator.
Comment:	Antigen size: 385 AA
Restrictions:	For Research Use only

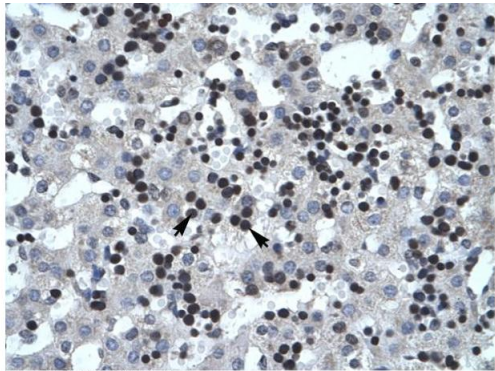
Handling

Format:	Liquid
Concentration:	Lot specific
Buffer:	Liquid. Purified antibody supplied in 1x PBS buffer with 0.09 % (w/v) sodium azide and 2 % sucrose.
Preservative:	Sodium azide
Precaution of Use:	This product contains Sodium azide: a POISONOUS AND HAZARDOUS SUBSTANCE which should be handled by trained staff only.
Handling Advice:	Avoid repeated freeze-thaw cycles.

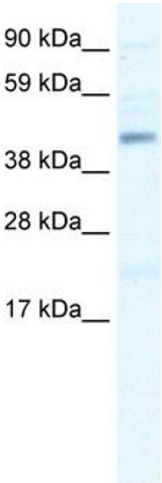
Handling

Storage:	-20 °C
Storage Comment:	For short term use, store at 2-8°C up to 1 week. For long term storage, store at -20°C in small aliquots to prevent freeze-thaw cycles.

Images



Rabbit Anti-SMARCB1 Antibody
Catalog Number: ARP34171
Lot Number: QC3530
Paraffin Embedded Tissue: Human Liver
Cells with Positive label: Liver cells (Indicated with Arrows)
Antibody Concentration: 4.0-8.0 µg/ml
Magnification: 400X

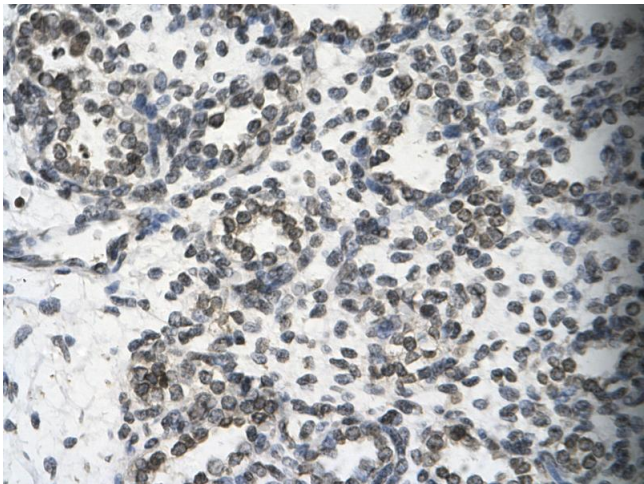


Immunohistochemistry

Image 1. Human Liver

Western Blotting

Image 2. WB Suggested Anti-SMARCB1 Antibody Titration:
0.2-1 ug/ml Positive Control: Human Thymus



Immunohistochemistry

Image 3. Rabbit Anti-SMARCB1 Antibody Paraffin Embedded Tissue: Human alveolar cell Cellular Data: Epithelial cells of renal tubule Antibody Concentration: 4.0-8.0 ug/ml Magnification: 400X