

Datasheet for ABIN2778305
anti-TRIM21 antibody (N-Term)



[Go to Product page](#)

2 Images

Overview

Quantity:	100 µL
Target:	TRIM21
Binding Specificity:	N-Term
Reactivity:	Human, Mouse, Rat, Guinea Pig, Dog, Rabbit
Host:	Rabbit
Clonality:	Polyclonal
Conjugate:	This TRIM21 antibody is un-conjugated
Application:	Western Blotting (WB)

Product Details

Immunogen:	The immunogen is a synthetic peptide directed towards the N terminal region of human TRIM21
Sequence:	GELRRKQELA EKLEVEIAIK RADWKKTVET QKSRIHAEFV QQKNFLVEEE
Predicted Reactivity:	Dog: 77%, Guinea Pig: 92%, Human: 100%, Mouse: 83%, Rabbit: 85%, Rat: 85%
Characteristics:	This is a rabbit polyclonal antibody against TRIM21. It was validated on Western Blot using a cell lysate as a positive control.
Purification:	Affinity Purified

Target Details

Target:	TRIM21
---------	--------

Target Details

Alternative Name: TRIM21 ([TRIM21 Products](#))

Background: TRIM21 is a member of the tripartite motif (TRIM) family. The TRIM motif includes three zinc-binding domains, a RING, a B-box type 1 and a B-box type 2, and a coiled-coil region. TRIM21 is part of the RoSSA ribonucleoprotein, which includes a single polypeptide and one of four small RNA molecules. The RoSSA particle localizes to both the cytoplasm and the nucleus. RoSSA interacts with autoantigens in patients with Sjogren syndrome and systemic lupus erythematosus. This gene encodes a member of the tripartite motif (TRIM) family. The TRIM motif includes three zinc-binding domains, a RING, a B-box type 1 and a B-box type 2, and a coiled-coil region. The encoded protein is part of the RoSSA ribonucleoprotein, which includes a single polypeptide and one of four small RNA molecules. The RoSSA particle localizes to both the cytoplasm and the nucleus. RoSSA interacts with autoantigens in patients with Sjogren syndrome and systemic lupus erythematosus. Alternatively spliced transcript variants for this gene have been described but the full-length nature of only one has been determined.

Publication Note: This RefSeq record includes a subset of the publications that are available for this gene. Please see the Entrez Gene record to access additional publications.

Alias Symbols: RNF81, RO52, SSA, SSA1

Protein Interaction Partner: TRIM39, IGHV4-31, TXN2, GRAP, UBE2I, TRIM21, IGHG1, USP15, HAUS2, UBE2D2, UBC, FBXO6, UBD, NPM1, PAN2, ROR1, NOS2, MYC, IQCB1, USP2, VCP, USP4, CDC34, CBL, UBC4, UBE2C, UBE2L3, UBE2H, UBE2D1, TROVE2, TRIM27, MNAT1, FCGR2A, CD52, DCP2, ZFPM1, TRIM5, TRIM8,

Protein Size: 475

Molecular Weight: 54 kDa

Gene ID: 6737

NCBI Accession: [NM_003141](#), [NP_003132](#)

UniProt: [P19474](#)

Application Details

Application Notes: Optimal working dilutions should be determined experimentally by the investigator.

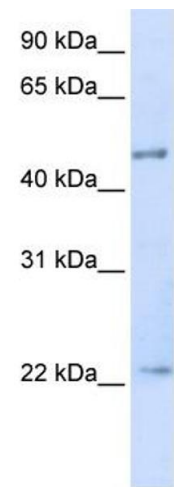
Comment: Antigen size: 475 AA

Restrictions: For Research Use only

Handling

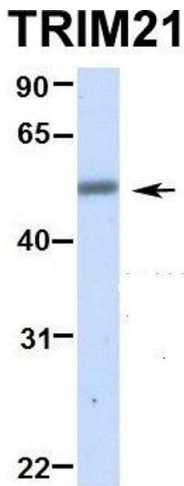
Format:	Liquid
Concentration:	Lot specific
Buffer:	Liquid. Purified antibody supplied in 1x PBS buffer with 0.09 % (w/v) sodium azide and 2 % sucrose.
Preservative:	Sodium azide
Precaution of Use:	This product contains Sodium azide: a POISONOUS AND HAZARDOUS SUBSTANCE which should be handled by trained staff only.
Handling Advice:	Avoid repeated freeze-thaw cycles.
Storage:	-20 °C
Storage Comment:	For short term use, store at 2-8°C up to 1 week. For long term storage, store at -20°C in small aliquots to prevent freeze-thaw cycles.

Images



Western Blotting

Image 1. WB Suggested Anti-TRIM21 Antibody Titration: 0.2-1 ug/ml ELISA Titer: 1:62500 Positive Control: Transfected 293T



Western Blotting

Image 2. Hum. Adult Placenta