

Datasheet for ABIN2778310
anti-CSRP3 antibody (Middle Region)[Go to Product page](#)

2 Images

1 Publication

Overview

Quantity:	100 µL
Target:	CSRP3
Binding Specificity:	Middle Region
Reactivity:	Human, Mouse, Rat, Dog, Cow, Rabbit, Horse, Guinea Pig
Host:	Rabbit
Clonality:	Polyclonal
Conjugate:	This CSRP3 antibody is un-conjugated
Application:	Western Blotting (WB)

Product Details

Immunogen:	The immunogen is a synthetic peptide directed towards the middle region of human CSRP3
Sequence:	QGAGCLSTDT GEHLGLQFQQ SPKPARSVTT SNPSKFTAKF GESEKCPRCG
Predicted Reactivity:	Cow: 100%, Dog: 100%, Guinea Pig: 100%, Horse: 100%, Human: 100%, Mouse: 100%, Rabbit: 100%, Rat: 100%
Characteristics:	This is a rabbit polyclonal antibody against CSRP3. It was validated on Western Blot using a cell lysate as a positive control.
Purification:	Affinity Purified

Target Details

Target:	CSRP3
---------	-------

Target Details

Alternative Name:	CSRP3 (CSRP3 Products)
Background:	<p>The CSRP3 gene encodes a member of the CSRP family of LIM domain proteins, which may be involved in regulatory processes important for development and cellular differentiation. The LIM/double zinc-finger motif found in this protein is found in a group of proteins with critical functions in gene regulation, cell growth, and somatic differentiation. Mutations in CSRP3 are thought to cause heritable forms of hypertrophic cardiomyopathy (HCM) and dilated cardiomyopathy (DCM) in humans.</p> <p>Alias Symbols: CLP, MLP, CRP3, LMO4, CMD1M, CMH12</p> <p>Protein Interaction Partner: UBC, HDAC4, LDHD, SPTB, NHLH1, MYF6, MYOG, MYOD1, ACTN1,</p> <p>Protein Size: 194</p>
Molecular Weight:	21 kDa
Gene ID:	8048
NCBI Accession:	NM_003476 , NP_003467
UniProt:	P50461

Application Details

Application Notes:	Optimal working dilutions should be determined experimentally by the investigator.
Comment:	Antigen size: 194 AA
Restrictions:	For Research Use only

Handling

Format:	Liquid
Concentration:	Lot specific
Buffer:	Liquid. Purified antibody supplied in 1x PBS buffer with 0.09 % (w/v) sodium azide and 2 % sucrose.
Preservative:	Sodium azide
Precaution of Use:	This product contains Sodium azide: a POISONOUS AND HAZARDOUS SUBSTANCE which should be handled by trained staff only.
Handling Advice:	Avoid repeated freeze-thaw cycles.
Storage:	-20 °C

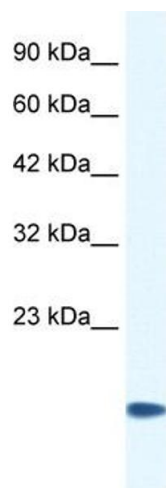
Handling

Storage Comment: For short term use, store at 2-8°C up to 1 week. For long term storage, store at -20°C in small aliquots to prevent freeze-thaw cycles.

Publications

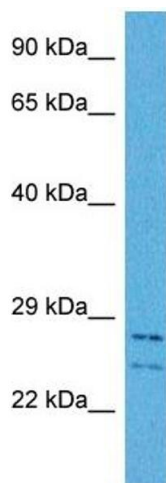
Product cited in: Roberts, Childs, Brown, Davis, Booth: "Early depression of Ankrd2 and Csrp3 mRNAs in the polyribosomal and whole tissue fractions in skeletal muscle with decreased voluntary running." in: **Journal of applied physiology (Bethesda, Md. : 1985)**, Vol. 112, Issue 8, pp. 1291-9, (2012) ([PubMed](#)).

Images



Western Blotting

Image 1. WB Suggested Anti-CSR3 Antibody Titration: 0.2-1 ug/ml ELISA Titer: 1:62500 Positive Control: Human heart



Western Blotting

Image 2. Host: Rabbit Target Name: CSR3 Sample Tissue: Human HCT116 Whole Cell Antibody Dilution: 1ug/ml