

Datasheet for ABIN2778314  
**anti-TIMELESS antibody (N-Term)**

## 3 Images

[Go to Product page](#)

## Overview

Quantity:	100 µL
Target:	TIMELESS
Binding Specificity:	N-Term
Reactivity:	Human, Mouse, Rat, Dog, Cow, Horse, Sheep, Guinea Pig, Pig, Rabbit
Host:	Rabbit
Clonality:	Polyclonal
Conjugate:	This TIMELESS antibody is un-conjugated
Application:	Western Blotting (WB), Immunohistochemistry (IHC)

## Product Details

Immunogen:	The immunogen is a synthetic peptide directed towards the N terminal region of human TIMELESS
Sequence:	IGERDLIFHK GLHNLRNYSS DLGKQPKKVP KRRQAARELS IQRRSALNVR
Predicted Reactivity:	Cow: 92%, Dog: 85%, Guinea Pig: 77%, Horse: 85%, Human: 100%, Mouse: 85%, Pig: 85%, Rabbit: 77%, Rat: 85%, Sheep: 77%
Characteristics:	This is a rabbit polyclonal antibody against TIMELESS. It was validated on Western Blot and immunohistochemistry.
Purification:	Affinity Purified

## Target Details

Target:	TIMELESS
---------	----------

## Target Details

Alternative Name:	TIMELESS ( <a href="#">TIMELESS Products</a> )
Background:	<p>The human Timeless protein interacts with both the circadian clock protein cryptochrome 2 and with the cell cycle checkpoint proteins Chk1 and the ATR-ATRIP complex and plays an important role in the DNA damage checkpoint response. Down-regulation of Timeless in human cells seriously compromises replication and intra-S checkpoints, indicating an intimate connection between the circadian cycle and the DNA damage checkpoints that is in part mediated by the Timeless protein.</p> <p>Alias Symbols: TIM, TIM1, hTIM</p> <p>Protein Interaction Partner: UBC, TUT1, TF, XRCC1, FKBP3, SP1, SUMO2, Tipin, Timeless, ZSCAN1, PCBD1, CRY1, PER2, PER1, CLSPN, PCNA, per, Clock, ATRIP, CRY2, CHEK1,</p> <p>Protein Size: 1208</p>
Molecular Weight:	139 kDa
Gene ID:	8914
NCBI Accession:	<a href="#">NM_003920</a> , <a href="#">NP_003911</a>
UniProt:	<a href="#">Q9UNS1</a>
Pathways:	<a href="#">Protein targeting to Nucleus</a> , <a href="#">Photoperiodism</a>

## Application Details

Application Notes:	Optimal working dilutions should be determined experimentally by the investigator.
Comment:	Antigen size: 1208 AA
Restrictions:	For Research Use only

## Handling

Format:	Liquid
Concentration:	Lot specific
Buffer:	Liquid. Purified antibody supplied in 1x PBS buffer with 0.09 % (w/v) sodium azide and 2 % sucrose.
Preservative:	Sodium azide
Precaution of Use:	This product contains Sodium azide: a POISONOUS AND HAZARDOUS SUBSTANCE which should be handled by trained staff only.

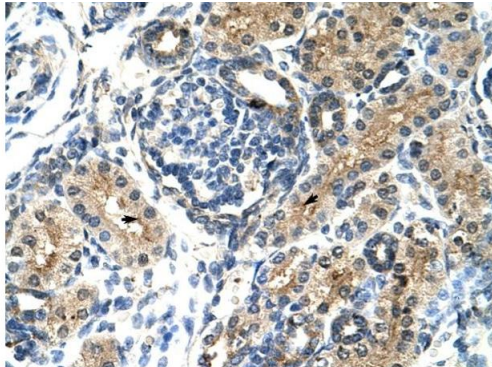
## Handling

Handling Advice: Avoid repeated freeze-thaw cycles.

Storage: -20 °C

Storage Comment: For short term use, store at 2-8°C up to 1 week. For long term storage, store at -20°C in small aliquots to prevent freeze-thaw cycles.

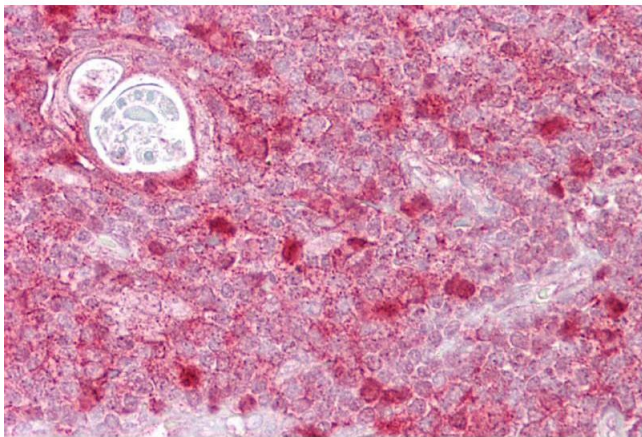
## Images



Rabbit Anti-TIMELESS Antibody  
Catalog Number: ARP34186  
Lot Number: QC3604  
Paraffin Embedded Tissue: Human Kidney  
Cells with Positive label: Epithelial cells of renal tubule (Indicated with Arrows)  
Antibody Concentration: 4.0-8.0 µg/ml  
Magnification: 400X

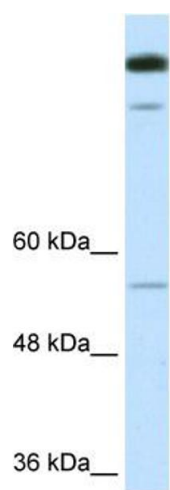
### Immunohistochemistry

**Image 1.** Human kidney



### Immunohistochemistry

**Image 2.** Thymus



Western Blotting

**Image 3.** WB Suggested Anti-TIMELESS Antibody Titration:  
0.2-1 ug/ml ELISA Titer: 1:312500 Positive Control:  
Transfected 293T