

Datasheet for ABIN2778320  
**anti-MED17 antibody (N-Term)**[Go to Product page](#)

## 4 Images

## Overview

Quantity:	100 µL
Target:	MED17
Binding Specificity:	N-Term
Reactivity:	Human, Mouse, Rat, Dog, Cow, Guinea Pig, Horse, Rabbit
Host:	Rabbit
Clonality:	Polyclonal
Conjugate:	This MED17 antibody is un-conjugated
Application:	Western Blotting (WB), Immunohistochemistry (IHC), Chromatin Immunoprecipitation (ChIP)

## Product Details

Immunogen:	The immunogen is a synthetic peptide directed towards the N terminal region of human CRSP6
Sequence:	AAQILLKGAE RLTKSVTENQ ENKLQRDFNS ELLRLRQHWK LRKVGDKILG
Predicted Reactivity:	Cow: 100%, Dog: 100%, Guinea Pig: 100%, Horse: 100%, Human: 100%, Mouse: 92%, Rabbit: 100%, Rat: 100%
Characteristics:	This is a rabbit polyclonal antibody against CRSP6. It was validated on Western Blot and immunohistochemistry.
Purification:	Affinity Purified

## Target Details

Target:	MED17
---------	-------

## Target Details

Alternative Name:	CRSP6 ( <a href="#">MED17 Products</a> )
Background:	<p>The activation of gene transcription is a multistep process that is triggered by factors that recognize transcriptional enhancer sites in DNA. These factors work with co-activators to direct transcriptional initiation by the RNA polymerase II apparatus. The protein encoded by CRSP6 is a subunit of the CRSP (cofactor required for SP1 activation) complex, which, along with TFIID, is required for efficient activation by SP1. This protein is also a component of other multisubunit complexes e.g. thyroid hormone receptor-(TR-) associated proteins which interact with TR and facilitate TR function on DNA templates in conjunction with initiation factors and cofactors.</p> <p>Alias Symbols: CRSP6, CRSP77, DRIP80, TRAP80</p> <p>Protein Interaction Partner: UBC, BRCA1, CDK19, CDK8, MED26, POLR2C, ESR2, MED19, FBXW7, EPAS1, TFIP11, MED24, MED21, MED14, MED11, MED28, WDR33, CPSF2, UBD, BCL6, SMARCA4, SUZ12, MED10, CTDP1, SREBF1, MED25, MED15, TRA, MED1, OBFC1, MED18, ZC3H13, MED12, QKI, TRIP4, TADA2A, SUPT7L,</p> <p>Protein Size: 651</p>
Molecular Weight:	73 kDa
Gene ID:	9440
NCBI Accession:	<a href="#">NM_004268</a> , <a href="#">NP_004259</a>
UniProt:	<a href="#">Q9NVC6</a>
Pathways:	<a href="#">Intracellular Steroid Hormone Receptor Signaling Pathway</a> , <a href="#">Stem Cell Maintenance</a> , <a href="#">Regulation of Lipid Metabolism by PPARalpha</a>

## Application Details

Application Notes:	Optimal working dilutions should be determined experimentally by the investigator.
Comment:	Antigen size: 651 AA
Restrictions:	For Research Use only

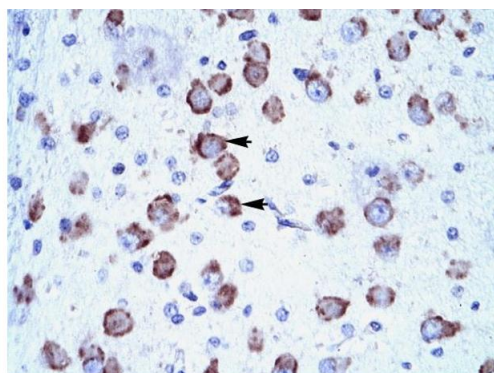
## Handling

Format:	Liquid
Concentration:	Lot specific
Buffer:	Liquid. Purified antibody supplied in 1x PBS buffer with 0.09 % (w/v) sodium azide and 2 % sucrose.

## Handling

Preservative:	Sodium azide
Precaution of Use:	This product contains Sodium azide: a POISONOUS AND HAZARDOUS SUBSTANCE which should be handled by trained staff only.
Handling Advice:	Avoid repeated freeze-thaw cycles.
Storage:	-20 °C
Storage Comment:	For short term use, store at 2-8°C up to 1 week. For long term storage, store at -20°C in small aliquots to prevent freeze-thaw cycles.

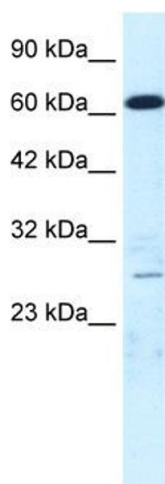
## Images



Rabbit Anti-CRSP6 Antibody  
Catalog Number: ARP34192  
Lot Number: QC3607  
Paraffin Embedded Tissue: Human Brain  
Cells with Positive label: Neural cells (Indicated with Arrows)  
Antibody Concentration: 4.0-8.0 µg/ml  
Magnification: 400X

### Immunohistochemistry

**Image 1.** Human Brain

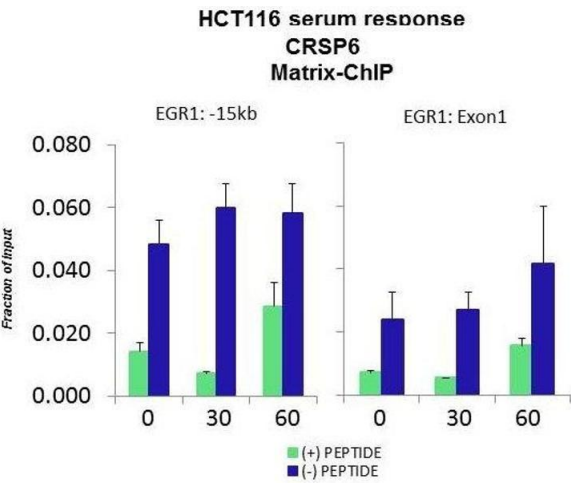


### Western Blotting

**Image 2.** WB Suggested Anti-CRSP6 Antibody Titration: 0.2-1 µg/ml ELISA Titer: 1:12500 Positive Control: HepG2 cell lysate MED17 is supported by BioGPS gene expression data to be expressed in HepG2

Chromatin Immunoprecipitation

**Image 3.** Quiescent human colon carcinoma HCT116 cultures were treated with 10% FBS for three time points (0, 15, 30min) or (0, 30, 60min) were used in Matrix-ChIP and real-time PCR assays at EGR1 gene (Exon1) and 15kb upstream site.



Please check the [product details page](#) for more images. Overall 4 images are available for ABIN2778320.