

Datasheet for ABIN2778323 anti-EGR3 antibody (Middle Region)



[Go to Product page](#)

2 Images

Overview

Quantity:	100 µL
Target:	EGR3
Binding Specificity:	Middle Region
Reactivity:	Human, Mouse, Rat, Horse, Cow, Dog, Guinea Pig, Rabbit, Sheep, Zebrafish (Danio rerio)
Host:	Rabbit
Clonality:	Polyclonal
Conjugate:	This EGR3 antibody is un-conjugated
Application:	Western Blotting (WB), Immunohistochemistry (IHC)

Product Details

Immunogen:	The immunogen is a synthetic peptide directed towards the middle region of human EGR3
Sequence:	HIRTHTGEKP FACEFCGRKF ARSDERKRHA KIHLLQKEKK AEKGGAPSAS
Predicted Reactivity:	Cow: 100%, Dog: 100%, Guinea Pig: 100%, Horse: 100%, Human: 100%, Mouse: 93%, Rabbit: 100%, Rat: 100%, Sheep: 77%, Zebrafish: 77%
Characteristics:	This is a rabbit polyclonal antibody against EGR3. It was validated on Western Blot using a cell lysate as a positive control.
Purification:	Affinity Purified

Target Details

Target:	EGR3
---------	------

Target Details

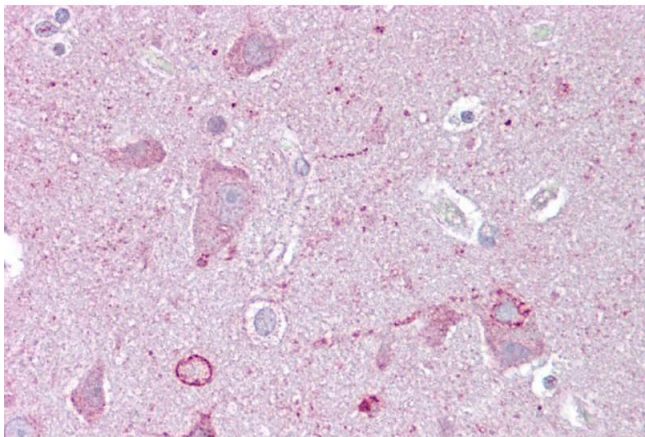
Alternative Name:	EGR3 (EGR3 Products)
Background:	EGR3 is a probable transcription factor involved in muscle spindle development. Alias Symbols: MGC138484, PILOT, EGR-3 Protein Interaction Partner: FASLG, Protein Size: 387
Molecular Weight:	42 kDa
Gene ID:	1960
NCBI Accession:	NM_004430 , NP_004421
UniProt:	Q06889

Application Details

Application Notes:	Optimal working dilutions should be determined experimentally by the investigator.
Comment:	Antigen size: 387 AA
Restrictions:	For Research Use only

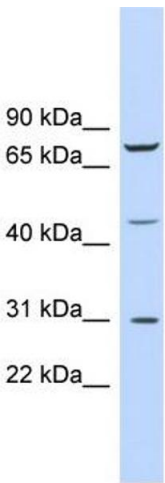
Handling

Format:	Liquid
Concentration:	Lot specific
Buffer:	Liquid. Purified antibody supplied in 1x PBS buffer with 0.09 % (w/v) sodium azide and 2 % sucrose.
Preservative:	Sodium azide
Precaution of Use:	This product contains Sodium azide: a POISONOUS AND HAZARDOUS SUBSTANCE which should be handled by trained staff only.
Handling Advice:	Avoid repeated freeze-thaw cycles.
Storage:	-20 °C
Storage Comment:	For short term use, store at 2-8°C up to 1 week. For long term storage, store at -20°C in small aliquots to prevent freeze-thaw cycles.



Immunohistochemistry

Image 1. Immunohistochemistry with Brain, cortex tissue at an antibody concentration of 5µg/ml using anti-EGR3 antibody (ARP34196_P050)



Western Blotting

Image 2. WB Suggested Anti-EGR3 Antibody Titration: 0.2-1 ug/ml ELISA Titer: 1:62500 Positive Control: 721_B cell lysate