

Datasheet for ABIN2778325
anti-ASH2L antibody (Middle Region)

3 Images

[Go to Product page](#)

Overview

Quantity:	100 µL
Target:	ASH2L
Binding Specificity:	Middle Region
Reactivity:	Human, Mouse, Rat, Dog, Horse, Cow, Guinea Pig, Rabbit
Host:	Rabbit
Clonality:	Polyclonal
Conjugate:	This ASH2L antibody is un-conjugated
Application:	Western Blotting (WB), Immunohistochemistry (IHC)

Product Details

Immunogen:	The immunogen is a synthetic peptide directed towards the middle region of human ASH2L
Sequence:	AAGSSGKGRG AKRKQQDGGT TGTTKKARSD PLFSAQRLPP HGYPLEHPFN
Predicted Reactivity:	Cow: 86%, Dog: 100%, Guinea Pig: 100%, Horse: 100%, Human: 100%, Mouse: 100%, Rabbit: 100%, Rat: 100%
Characteristics:	This is a rabbit polyclonal antibody against ASH2L. It was validated on Western Blot using a cell lysate as a positive control.
Purification:	Affinity Purified

Target Details

Target:	ASH2L
---------	-------

Target Details

Alternative Name:	ASH2L (ASH2L Products)
Background:	<p>ASH2L is a component of the Set1/Ash2 histone methyltransferase (HMT) complex, a complex that specifically methylates 'Lys-4' of histone H3, but not if the neighboring 'Lys-9' residue is already methylated. The protein may function as a transcriptional regulator and play a role in hematopoiesis.</p> <p>Alias Symbols: ASH2, ASH2L1, ASH2L2, Bre2</p> <p>Protein Interaction Partner: CXXC1, DPY30, SETD1A, RBBP5, PPARG, KMT2A, KMT2D, UBC, SENP3, KDM6A, PPP1CC, SMAD9, KDM6B, WWP1, BRCA1, BARD1, WDR5, MEN1, USF1, KMT2C, HCFC2, SETD1B, KDM4B, KMT2B, HCFC1, ESR1, CDC73, HIST3H3, PYGO2, WDR82, PSMC5, PRMT1, E2F4, E2F1, PAGR1, NCOA6, PAXIP1,</p> <p>Protein Size: 628</p>
Molecular Weight:	69 kDa
Gene ID:	9070
NCBI Accession:	NM_004674 , NP_004665
UniProt:	Q9UBL3

Application Details

Application Notes:	Optimal working dilutions should be determined experimentally by the investigator.
Comment:	Antigen size: 628 AA
Restrictions:	For Research Use only

Handling

Format:	Liquid
Concentration:	Lot specific
Buffer:	Liquid. Purified antibody supplied in 1x PBS buffer with 0.09 % (w/v) sodium azide and 2 % sucrose.
Preservative:	Sodium azide
Precaution of Use:	This product contains Sodium azide: a POISONOUS AND HAZARDOUS SUBSTANCE which should be handled by trained staff only.
Handling Advice:	Avoid repeated freeze-thaw cycles.

Handling

Storage: -20 °C

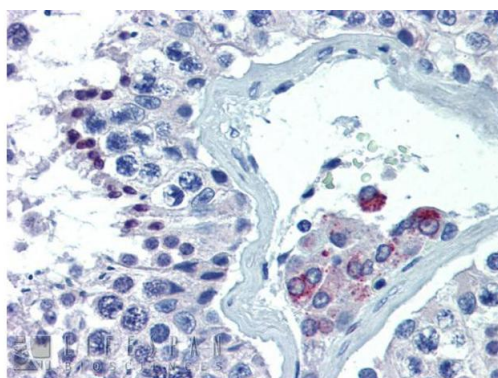
Storage Comment: For short term use, store at 2-8°C up to 1 week. For long term storage, store at -20°C in small aliquots to prevent freeze-thaw cycles.

Images



Western Blotting

Image 1. WB Suggested Anti-ASH2L Antibody Titration: 0.2-1 ug/ml ELISA Titer: 1:1562500 Positive Control: Hela cell lysate

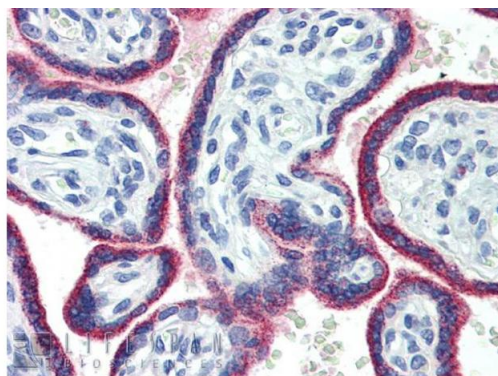


Rabbit Anti-ASH2L Antibody
Catalog Number: ARP34202
Lot Number: QC3616
Paraffin Embedded Tissue: Human Testis
Antibody Concentration: 5.0 µg/ml

Data courtesy of Lifespan Biosciences, Inc.

Immunohistochemistry

Image 2. Immunohistochemistry with Human Testis lysate tissue at an antibody concentration of 5.0ug/ml using anti-ASH2L antibody



Rabbit Anti-ASH2L Antibody
Catalog Number: ARP34202
Lot Number: QC3616
Paraffin Embedded Tissue: Human Placenta
Antibody Concentration: 5.0 µg/ml

Data courtesy of Lifespan Biosciences, Inc.

Immunohistochemistry

Image 3. Immunohistochemistry with Human Placenta lysate tissue at an antibody concentration of 5.0ug/ml using anti-ASH2L antibody