

Datasheet for ABIN2778327  
**anti-ASH2L antibody (N-Term)**



[Go to Product page](#)

2 Images

## Overview

Quantity:	100 µL
Target:	ASH2L
Binding Specificity:	N-Term
Reactivity:	Human, Mouse, Rat, Dog, Horse, Cow, Guinea Pig
Host:	Rabbit
Clonality:	Polyclonal
Conjugate:	This ASH2L antibody is un-conjugated
Application:	Western Blotting (WB), Immunohistochemistry (IHC)

## Product Details

Immunogen:	The immunogen is a synthetic peptide directed towards the N terminal region of human ASH2L
Sequence:	EPSSGEAEGG EANLVDVSGG LETESSNGKD TLEGAGDTSE VMDTQAGSVD
Predicted Reactivity:	Cow: 100%, Dog: 100%, Guinea Pig: 100%, Horse: 100%, Human: 100%, Mouse: 93%, Rat: 100%
Characteristics:	This is a rabbit polyclonal antibody against ASH2L. It was validated on Western Blot using a cell lysate as a positive control.
Purification:	Protein A purified

## Target Details

Target:	ASH2L
Alternative Name:	ASH2L ( <a href="#">ASH2L Products</a> )

## Target Details

Background:	<p>ASH2L plays a role in hematopoiesis and is associated with some special kinds of leukemia.</p> <p>The amount of ASH2L transcripts is extremely high in fetal liver, testis, and leukemia cell lines with erythroid and megakaryocytic potential.</p> <p>Alias Symbols: ASH2, Bre2, ASH2L1, ASH2L2</p> <p>Protein Interaction Partner: CXXC1, DPY30, SETD1A, RBBP5, PPARG, KMT2A, KMT2D, UBC, SENP3, KDM6A, PPP1CC, SMAD9, KDM6B, WWP1, BRCA1, BARD1, WDR5, MEN1, USF1, KMT2C, HCFC2, SETD1B, KDM4B, KMT2B, HCFC1, ESR1, CDC73, HIST3H3, PYGO2, WDR82, PSMC5, PRMT1, E2F4, E2F1, PAGR1, NCOA6, PAXIP1,</p> <p>Protein Size: 628</p>
Molecular Weight:	69 kDa
Gene ID:	9070
NCBI Accession:	<a href="#">NM_004674</a> , <a href="#">NP_004665</a>
UniProt:	<a href="#">Q9UBL3</a>

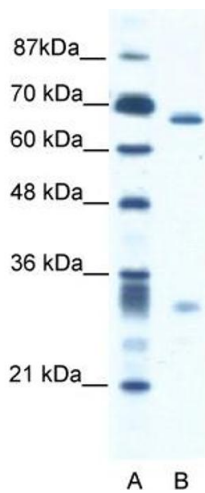
## Application Details

Application Notes:	Optimal working dilutions should be determined experimentally by the investigator.
Comment:	Antigen size: 628 AA
Restrictions:	For Research Use only

## Handling

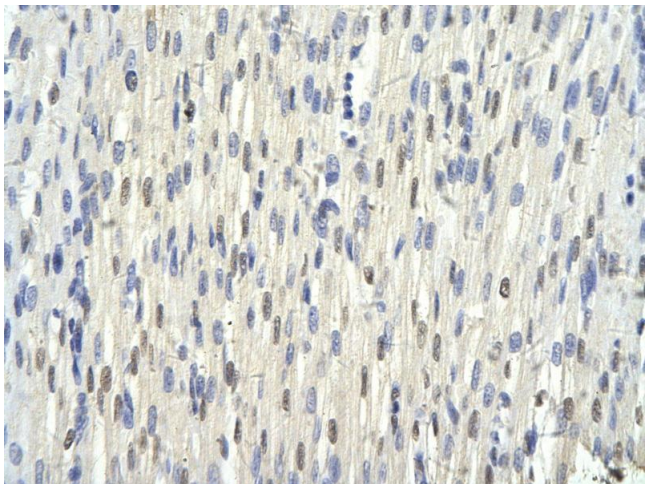
Format:	Liquid
Concentration:	Lot specific
Buffer:	Liquid. Purified antibody supplied in 1x PBS buffer with 0.09 % (w/v) sodium azide and 2 % sucrose.
Preservative:	Sodium azide
Precaution of Use:	This product contains Sodium azide: a POISONOUS AND HAZARDOUS SUBSTANCE which should be handled by trained staff only.
Handling Advice:	Avoid repeated freeze-thaw cycles.
Storage:	-20 °C
Storage Comment:	For short term use, store at 2-8°C up to 1 week. For long term storage, store at -20°C in small

aliquots to prevent freeze-thaw cycles.



Western Blotting

**Image 1.** WB Suggested Anti-ASH2L Antibody Titration: 2.5 ug/ml Positive Control: Jurkat Whole Cell ASH2L is supported by BioGPS gene expression data to be expressed in Jurkat



Immunohistochemistry

**Image 2.** Rabbit Anti-ASH2L antibody Paraffin Embedded Tissue: Human Heart cell Cellular Data: Epithelial cells of renal tubule Antibody Concentration: 4.0-8.0 ug/ml Magnification: 400X