

Datasheet for ABIN2778336
anti-MED6 antibody (Middle Region)[Go to Product page](#)

4 Images

Overview

Quantity:	100 µL
Target:	MED6
Binding Specificity:	Middle Region
Reactivity:	Human, Mouse, Rat, Dog, Cow, Horse, Rabbit, Guinea Pig, Pig
Host:	Rabbit
Clonality:	Polyclonal
Conjugate:	This MED6 antibody is un-conjugated
Application:	Western Blotting (WB), Chromatin Immunoprecipitation (ChIP)

Product Details

Immunogen:	The immunogen is a synthetic peptide directed towards the middle region of human MED6
Sequence:	LLLDLRQKFP PKFVQLKPGE KPVPVDQTKK EAEPETVK PEEKETTKNV
Predicted Reactivity:	Cow: 93%, Dog: 93%, Guinea Pig: 86%, Horse: 93%, Human: 100%, Mouse: 86%, Pig: 93%, Rabbit: 93%, Rat: 93%
Characteristics:	This is a rabbit polyclonal antibody against MED6. It was validated on Western Blot using a cell lysate as a positive control.
Purification:	Affinity Purified

Target Details

Target:	MED6
---------	------

Target Details

Alternative Name:	MED6 (MED6 Products)
Background:	<p>MED6 is a component of the Mediator complex, a coactivator involved in the regulated transcription of nearly all RNA polymerase II-dependent genes. Mediator functions as a bridge to convey information from gene-specific regulatory proteins to the basal RNA polymerase II transcription machinery. And mediator is recruited to promoters by direct interactions with regulatory proteins and serves as a scaffold for the assembly of a functional preinitiation complex with RNA polymerase II and the general transcription factors.</p> <p>Alias Symbols: NY-REN-28</p> <p>Protein Interaction Partner: TARDBP, UBC, CDK19, CDK8, MED10, MED23, CCNC, MED19, MED26, FBXW7, MED11, MED28, MED29, MED4, MED12, MED7, MED21, MED1, SMARCA4, BCL6, SUZ12, CUL1, SKP1, CTDP1, MED25, SREBF1, MED15, VDR, OBFC1, MED18, ZC3H13, TADA2A, RARA, PARP1, SMAD3, SMAD2, SMAD1, MED</p> <p>Protein Size: 246</p>
Molecular Weight:	28 kDa
Gene ID:	10001
NCBI Accession:	NM_005466 , NP_005457
UniProt:	O75586
Pathways:	Stem Cell Maintenance , Regulation of Lipid Metabolism by PPARalpha

Application Details

Application Notes:	Optimal working dilutions should be determined experimentally by the investigator.
Comment:	Antigen size: 246 AA
Restrictions:	For Research Use only

Handling

Format:	Liquid
Concentration:	Lot specific
Buffer:	Liquid. Purified antibody supplied in 1x PBS buffer with 0.09 % (w/v) sodium azide and 2 % sucrose.
Preservative:	Sodium azide
Precaution of Use:	This product contains Sodium azide: a POISONOUS AND HAZARDOUS SUBSTANCE which

Handling

	should be handled by trained staff only.
Handling Advice:	Avoid repeated freeze-thaw cycles.
Storage:	-20 °C
Storage Comment:	For short term use, store at 2-8°C up to 1 week. For long term storage, store at -20°C in small aliquots to prevent freeze-thaw cycles.

Images

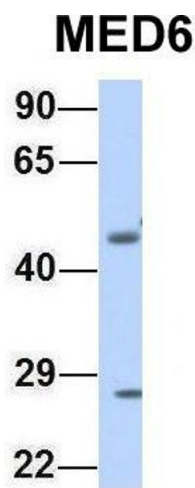


Western Blotting

Image 1. WB Suggested Anti-MED6 Antibody Titration: 0.2-1 ug/ml ELISA Titer: 1:312500 Positive Control: 721_B cell lysate MED6 is strongly supported by BioGPS gene expression data to be expressed in Human 721_B cells

Western Blotting

Image 2. Host: Rabbit Target Name: MED6 Sample Type: Human Fetal Muscle Antibody Dilution: 1.0ug/ml



Western Blotting

Image 3. Host: Rabbit Target Name: MED6 Sample Type:
Human Fetal Brain Antibody Dilution: 1.0ug/ml

Please check the [product details page](#) for more images. Overall 4 images are available for ABIN2778336.