

Datasheet for ABIN2778337
anti-MAMLD1 antibody (N-Term)[Go to Product page](#)

1 Image

Overview

Quantity:	100 µL
Target:	MAMLD1
Binding Specificity:	N-Term
Reactivity:	Human, Dog, Mouse, Horse, Rabbit, Guinea Pig, Rat, Pig
Host:	Rabbit
Clonality:	Polyclonal
Conjugate:	This MAMLD1 antibody is un-conjugated
Application:	Western Blotting (WB)

Product Details

Immunogen:	The immunogen is a synthetic peptide directed towards the N terminal region of human CXORF6
Sequence:	LEELTKIQDP SPNELDLEKI LGTKPEEPLV LDHPQATLST TPKPSVQMSH
Predicted Reactivity:	Dog: 86%, Guinea Pig: 79%, Horse: 86%, Human: 100%, Mouse: 79%, Pig: 86%, Rabbit: 86%, Rat: 79%
Characteristics:	This is a rabbit polyclonal antibody against CXORF6. It was validated on Western Blot using a cell lysate as a positive control.
Purification:	Protein A purified

Target Details

Target:	MAMLD1
---------	--------

Target Details

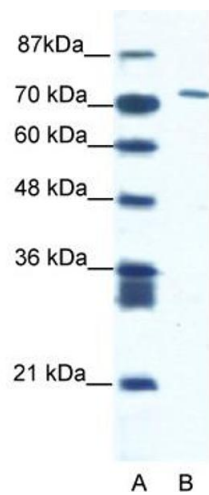
Alternative Name:	CXORF6 (MAMLD1 Products)
Background:	CXorf6 is a protein predicted based on an ORF found in chromosome 14 Alias Symbols: CG1, F18, HYSP2, CXorf6 Protein Size: 701
Molecular Weight:	74 kDa
Gene ID:	10046
NCBI Accession:	NM_005491 , NP_005482
UniProt:	Q13495

Application Details

Application Notes:	Optimal working dilutions should be determined experimentally by the investigator.
Comment:	Antigen size: 701 AA
Restrictions:	For Research Use only

Handling

Format:	Liquid
Concentration:	Lot specific
Buffer:	Liquid. Purified antibody supplied in 1x PBS buffer with 0.09 % (w/v) sodium azide and 2 % sucrose.
Preservative:	Sodium azide
Precaution of Use:	This product contains Sodium azide: a POISONOUS AND HAZARDOUS SUBSTANCE which should be handled by trained staff only.
Handling Advice:	Avoid repeated freeze-thaw cycles.
Storage:	-20 °C
Storage Comment:	For short term use, store at 2-8°C up to 1 week. For long term storage, store at -20°C in small aliquots to prevent freeze-thaw cycles.



Western Blotting

Image 1. WB Suggested Anti-CXORF6 Antibody Titration:
1.25ug/ml ELISA Titer: 1:1562500 Positive Control: Jurkat cell lysate