

Datasheet for ABIN2778340  
**anti-Afadin antibody (N-Term)**

## 2 Images

[Go to Product page](#)

## Overview

Quantity:	100 µL
Target:	Afadin (MLLT4)
Binding Specificity:	N-Term
Reactivity:	Human, Rat, Mouse, Dog, Cow, Guinea Pig, Horse, Rabbit, Pig, Saccharomyces cerevisiae, Zebrafish (Danio rerio)
Host:	Rabbit
Clonality:	Polyclonal
Conjugate:	This Afadin antibody is un-conjugated
Application:	Western Blotting (WB)

## Product Details

Immunogen:	The immunogen is a synthetic peptide directed towards the N terminal region of human MLLT4
Sequence:	GVIQNFKRTL SKKEKKEKKK REKEALRQAS DKDDRPFQGE DVENSRLAAE
Predicted Reactivity:	Cow: 100%, Dog: 100%, Guinea Pig: 92%, Horse: 93%, Human: 100%, Mouse: 93%, Pig: 93%, Rabbit: 85%, Rat: 100%, Yeast: 92%, Zebrafish: 91%
Characteristics:	This is a rabbit polyclonal antibody against MLLT4. It was validated on Western Blot using a cell lysate as a positive control.
Purification:	Protein A purified

## Target Details

Target:	Afadin (MLLT4)
---------	----------------

## Target Details

Alternative Name:	MLLT4 ( <a href="#">MLLT4 Products</a> )
Background:	<p>AF6 is a Ras target that regulates cell-cell adhesions downstream of Ras activation. It is fused with MLL in leukemias caused by t(6,11) translocations.</p> <p>Alias Symbols: RP3-470B24.4, AF-6, AF6, AFADIN, FLJ34371, RP3-431P23.3</p> <p>Protein Interaction Partner: UBC, LGR4, LATS2, YWHAQ, YWHAE, VCAM1, SMAD2, ITGA4, GRB2, FN1, SIRT7, HNRNPA1, ARRB2, YWHAG, YWHAB, KMT2A, MEN1, PVRL4, PICK1, RIT2, SORBS2, F11R, NRXN2, SSX2IP, RIT1, NRXN3, PVRL3, PVRL1, MRAS, SORBS1, EPHB6, EPHA7, JAG1, EPHB3, RALGDS, TJP1, EPHB2, PVR</p> <p>Protein Size: 674</p>
Molecular Weight:	74 kDa
Gene ID:	4301
NCBI Accession:	<a href="#">NM_001040000</a>
UniProt:	<a href="#">P55196</a>
Pathways:	<a href="#">Cell-Cell Junction Organization</a>

## Application Details

Application Notes:	Optimal working dilutions should be determined experimentally by the investigator.
Comment:	Antigen size: 674 AA
Restrictions:	For Research Use only

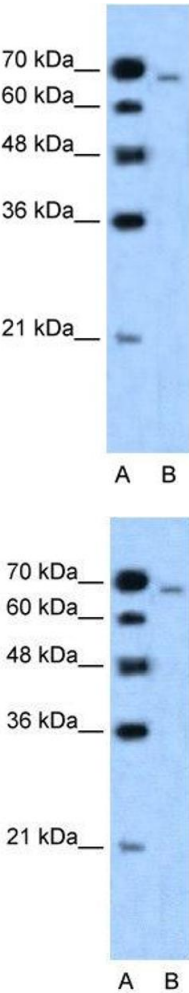
## Handling

Format:	Liquid
Concentration:	Lot specific
Buffer:	Liquid. Purified antibody supplied in 1x PBS buffer with 0.09 % (w/v) sodium azide and 2 % sucrose.
Preservative:	Sodium azide
Precaution of Use:	This product contains Sodium azide: a POISONOUS AND HAZARDOUS SUBSTANCE which should be handled by trained staff only.
Handling Advice:	Avoid repeated freeze-thaw cycles.
Storage:	-20 °C

Handling

Storage Comment: For short term use, store at 2-8°C up to 1 week. For long term storage, store at -20°C in small aliquots to prevent freeze-thaw cycles.

Images



**Western Blotting**

**Image 1.** WB Suggested Anti-MLLT4 Antibody Titration: 1.25ug/ml ELISA Titer: 1:312500 Positive Control: HepG2 cell lysate MLLT4 is strongly supported by BioGPS gene expression data to be expressed in Human HepG2 cells

**Western Blotting**

**Image 2.** WB Suggested Anti-MLLT4 Antibody Titration: 1.25 µg/mL ELISA Titer: 1:312500 Positive Control: HepG2 cell lysate MLLT4 is strongly supported by BioGPS gene expression data to be expressed in Human HepG2 cells