

Datasheet for ABIN2778345
anti-AFF3 antibody (Middle Region)[Go to Product page](#)

1 Image

1 Publication

Overview

Quantity:	100 µL
Target:	AFF3
Binding Specificity:	Middle Region
Reactivity:	Human, Mouse, Rat, Pig, Rabbit, Dog
Host:	Rabbit
Clonality:	Polyclonal
Conjugate:	This AFF3 antibody is un-conjugated
Application:	Western Blotting (WB)

Product Details

Immunogen:	The immunogen is a synthetic peptide directed towards the middle region of human AFF3
Sequence:	APATKDSESA PPSHTSDTPA EKALPKSKRK RKCDNEDDYR EIKKSQGEKD
Predicted Reactivity:	Dog: 86%, Human: 100%, Mouse: 93%, Pig: 86%, Rabbit: 77%, Rat: 93%
Characteristics:	This is a rabbit polyclonal antibody against AFF3. It was validated on Western Blot using a cell lysate as a positive control.
Purification:	Affinity Purified

Target Details

Target:	AFF3
Alternative Name:	AFF3 (AFF3 Products)

Target Details

Background:	<p>AFF3 is a tissue-restricted nuclear transcriptional activator that is preferentially expressed in lymphoid tissue. Isolation of this protein initially defined a highly conserved LAF4/MLLT2 gene family of nuclear transcription factors that may function in lymphoid development and oncogenesis. In some ALL patients, this gene has been found fused to the gene for MLL. This gene encodes a tissue-restricted nuclear transcriptional activator that is preferentially expressed in lymphoid tissue. Isolation of this protein initially defined a highly conserved LAF4/MLLT2 gene family of nuclear transcription factors that may function in lymphoid development and oncogenesis. In some ALL patients, this gene has been found fused to the gene for MLL. Multiple alternatively spliced transcript variants that encode different proteins have been found for this gene.</p> <p>Alias Symbols: LAF4, MLLT2-like</p> <p>Protein Interaction Partner: CDK9, MLLT3,</p> <p>Protein Size: 1226</p>
-------------	---

Molecular Weight:	133 kDa
-------------------	---------

Gene ID:	3899
----------	------

NCBI Accession:	NM_002285 , NP_002276
-----------------	---

UniProt:	P51826
----------	------------------------

Application Details

Application Notes:	Optimal working dilutions should be determined experimentally by the investigator.
--------------------	--

Comment:	Antigen size: 1226 AA
----------	-----------------------

Restrictions:	For Research Use only
---------------	-----------------------

Handling

Format:	Liquid
---------	--------

Concentration:	Lot specific
----------------	--------------

Buffer:	Liquid. Purified antibody supplied in 1x PBS buffer with 0.09 % (w/v) sodium azide and 2 % sucrose.
---------	---

Preservative:	Sodium azide
---------------	--------------

Precaution of Use:	This product contains Sodium azide: a POISONOUS AND HAZARDOUS SUBSTANCE which should be handled by trained staff only.
--------------------	--

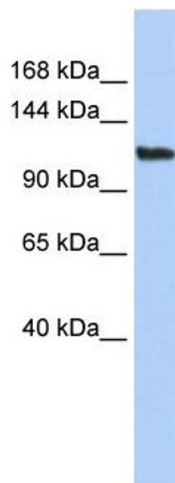
Handling

Handling Advice:	Avoid repeated freeze-thaw cycles.
Storage:	-20 °C
Storage Comment:	For short term use, store at 2-8°C up to 1 week. For long term storage, store at -20°C in small aliquots to prevent freeze-thaw cycles.

Publications

Product cited in:	van Dijk, Schilders, Pruijn: "Human cell growth requires a functional cytoplasmic exosome, which is involved in various mRNA decay pathways." in: RNA (New York, N.Y.) , Vol. 13, Issue 7, pp. 1027-35, (2007) (PubMed).
-------------------	---

Images



Western Blotting

Image 1. WB Suggested Anti-AFF3 Antibody Titration: 0.2-1 ug/ml ELISA Titer: 1:12500 Positive Control: HepG2 cell lysate