



[Go to Product page](#)

Datasheet for ABIN2778348  
**anti-AFF2 antibody (N-Term)**

4 Images

### Overview

Quantity:	100 µL
Target:	AFF2
Binding Specificity:	N-Term
Reactivity:	Human, Mouse, Cow, Rabbit, Horse, Rat, Guinea Pig, Dog, Pig, Zebrafish (Danio rerio)
Host:	Rabbit
Clonality:	Polyclonal
Conjugate:	This AFF2 antibody is un-conjugated
Application:	Western Blotting (WB)

### Product Details

Immunogen:	The immunogen is a synthetic peptide directed towards the N terminal region of human AFF2
Sequence:	MDLDFFFRDW DLEQQCHYEQ DRSALKKREW ERRNQEVQQE DDLFSSGFDL
Predicted Reactivity:	Cow: 100%, Dog: 100%, Guinea Pig: 93%, Horse: 100%, Human: 100%, Mouse: 93%, Pig: 100%, Rabbit: 100%, Rat: 100%, Zebrafish: 77%
Characteristics:	This is a rabbit polyclonal antibody against AFF2. It was validated on Western Blot using a cell lysate as a positive control.
Purification:	Affinity Purified

### Target Details

Target:	AFF2
---------	------

## Target Details

---

Alternative Name:	AFF2 ( <a href="#">AFF2 Products</a> )
Background:	AFF2 belongs to the AF4 family. Defects in AFF2 are the cause of FRAXE. The exact function of AFF2 remains unknown. Alias Symbols: FMR2, FRAXE, MRX2, OX19, FMR2P Protein Size: 1311
Molecular Weight:	145 kDa
Gene ID:	2334
NCBI Accession:	<a href="#">NM_002025</a> , <a href="#">NP_002016</a>
UniProt:	<a href="#">P51816</a>

## Application Details

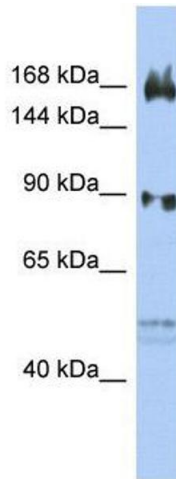
---

Application Notes:	Optimal working dilutions should be determined experimentally by the investigator.
Comment:	Antigen size: 1311 AA
Restrictions:	For Research Use only

## Handling

---

Format:	Liquid
Concentration:	Lot specific
Buffer:	Liquid. Purified antibody supplied in 1x PBS buffer with 0.09 % (w/v) sodium azide and 2 % sucrose.
Preservative:	Sodium azide
Precaution of Use:	This product contains Sodium azide: a POISONOUS AND HAZARDOUS SUBSTANCE which should be handled by trained staff only.
Handling Advice:	Avoid repeated freeze-thaw cycles.
Storage:	-20 °C
Storage Comment:	For short term use, store at 2-8°C up to 1 week. For long term storage, store at -20°C in small aliquots to prevent freeze-thaw cycles.



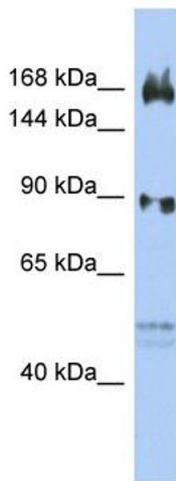
#### Western Blotting

**Image 1.** WB Suggested Anti-AFF2

Antibody Titration: 0.2-1 µg/mL ELISA Titer: 1:2500

Positive Control: OVCAR-3 cell lysate

AFF2 is strongly supported by BioGPS gene expression data to be expressed in Human OVCAR3 cells

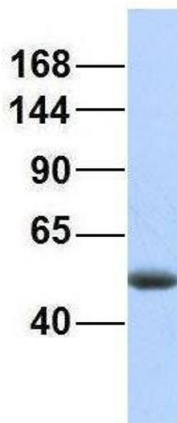


#### Western Blotting

**Image 2.** WB Suggested Anti-AFF2 Antibody Titration: 0.2-1

ug/ml ELISA Titer: 1:62500 Positive Control: OVCAR-3 cell lysate AFF2 is strongly supported by BioGPS gene expression data to be expressed in Human OVCAR3 cells

### AFF2



#### Western Blotting

**Image 3.** Host: Rabbit Target Name: AFF2 Sample Type:

Human Fetal Lung Antibody Dilution: 1.0ug/ml

Please check the [product details page](#) for more images. Overall 4 images are available for ABIN2778348.