

Datasheet for ABIN2778358  
**anti-GRHL2 antibody (Middle Region)**[Go to Product page](#)

## 4 Images

## Overview

Quantity:	100 µL
Target:	GRHL2
Binding Specificity:	Middle Region
Reactivity:	Human, Mouse, Rat, Cow, Dog, Guinea Pig, Horse, Rabbit, Zebrafish (Danio rerio)
Host:	Rabbit
Clonality:	Polyclonal
Conjugate:	This GRHL2 antibody is un-conjugated
Application:	Western Blotting (WB), Immunohistochemistry (IHC)

## Product Details

Immunogen:	The immunogen is a synthetic peptide directed towards the middle region of human GRHL2
Sequence:	VEKIAKLYKK SKKGILVNMD DNIIEHYSNE DTFILNMESM VEGFKVTLME
Predicted Reactivity:	Cow: 100%, Dog: 100%, Guinea Pig: 100%, Horse: 100%, Human: 100%, Mouse: 100%, Rabbit: 100%, Rat: 100%, Zebrafish: 100%
Characteristics:	This is a rabbit polyclonal antibody against GRHL2. It was validated on Western Blot using a cell lysate as a positive control.
Purification:	Affinity Purified

## Target Details

Target:	GRHL2
---------	-------

## Target Details

Alternative Name:	GRHL2 ( <a href="#">GRHL2 Products</a> )
Background:	<p>GRHL2 is a transcription factor that can act as a homodimer or as a heterodimer with either GRHL1 or GRHL3. Defects in this gene are a cause of non-syndromic sensorineural deafness autosomal dominant type 28 (DFNA28).TFCP2L3 is a member of a family of transcription factor genes whose archetype is TFCP2 (MIM 189889), a mammalian ortholog of the Drosophila gene 'grainyhead' (grh).[supplied by OMIM]. Sequence Note: This RefSeq record was created from transcript and genomic sequence data because transcript sequence consistent with the reference genome assembly was not available for all regions of the RefSeq transcript. The extent of this transcript is supported by transcript alignments.</p> <p>Alias Symbols: BOM, DFNA28, FLJ11172, FLJ13782, MGC149294, MGC149295, TFCP2L3</p> <p>Protein Interaction Partner: LMO4, APP, GRHL3,</p> <p>Protein Size: 625</p>
Molecular Weight:	71 kDa
Gene ID:	79977
NCBI Accession:	<a href="#">NM_024915</a> , <a href="#">NP_079191</a>
UniProt:	<a href="#">Q6ISB3</a>
Pathways:	<a href="#">Tube Formation</a>

## Application Details

Application Notes:	Optimal working dilutions should be determined experimentally by the investigator.
Comment:	Antigen size: 625 AA
Restrictions:	For Research Use only

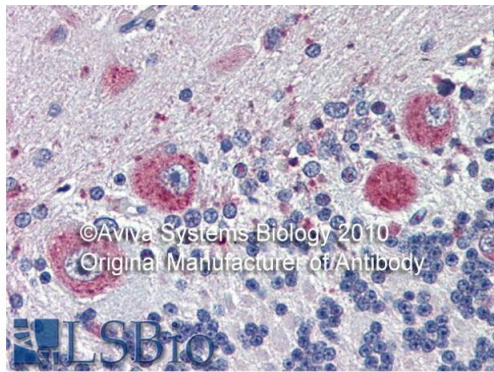
## Handling

Format:	Liquid
Concentration:	Lot specific
Buffer:	Liquid. Purified antibody supplied in 1x PBS buffer with 0.09 % (w/v) sodium azide and 2 % sucrose.
Preservative:	Sodium azide
Precaution of Use:	This product contains Sodium azide: a POISONOUS AND HAZARDOUS SUBSTANCE which should be handled by trained staff only.

## Handling

Handling Advice:	Avoid repeated freeze-thaw cycles.
Storage:	-20 °C
Storage Comment:	For short term use, store at 2-8°C up to 1 week. For long term storage, store at -20°C in small aliquots to prevent freeze-thaw cycles.

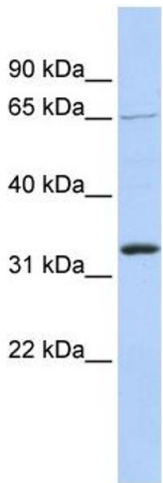
## Images



©Aviva Systems Biology 2010  
Original Manufacturer of Antibody  
LSBio  
Rabbit Anti-GRHL2 Antibody  
Catalog Number: ARP39635  
Lot Number: QC9056  
Paraffin Embedded Tissue: Human Brain  
Antibody Concentration: 5.0 µg/ml  
Data courtesy of Lifespan Biosciences, Inc.  
Aviva Systems Biology is the original manufacturer of this antibody.

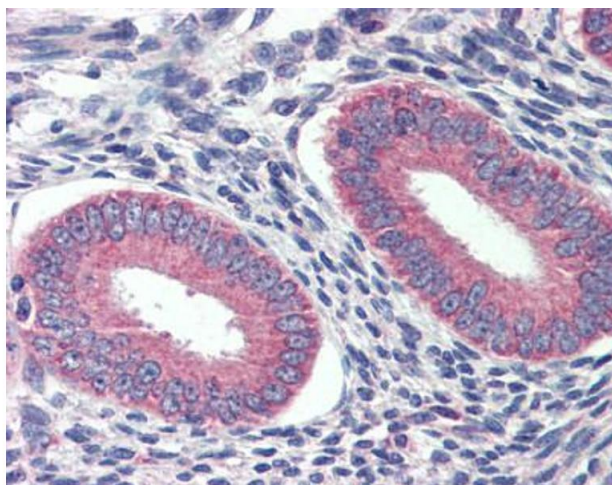
### Immunohistochemistry

Image 1.



### Western Blotting

Image 2. WB Suggested Anti-GRHL2 Antibody Titration: 1 ug/ml Positive Control: 721\_B cell lysate



#### Immunohistochemistry

**Image 3.**

Please check the [product details page](#) for more images. Overall 4 images are available for ABIN2778358.