

Datasheet for ABIN2778376  
**anti-MXD3 antibody (C-Term)**



[Go to Product page](#)

1 Image

## Overview

Quantity:	100 µL
Target:	MXD3
Binding Specificity:	C-Term
Reactivity:	Human, Mouse, Rat, Dog, Rabbit, Cow, Horse, Pig, Guinea Pig, Zebrafish (Danio rerio)
Host:	Rabbit
Clonality:	Polyclonal
Conjugate:	This MXD3 antibody is un-conjugated
Application:	Western Blotting (WB)

## Product Details

Immunogen:	The immunogen is a synthetic peptide directed towards the C-terminal region of Human MXD3
Sequence:	RLRADSLDSS GLSSERSDSD QEELEVDVES LVFGGEAELL RGFVAGQEHS
Predicted Reactivity:	Cow: 100%, Dog: 100%, Guinea Pig: 91%, Horse: 100%, Human: 100%, Mouse: 93%, Pig: 100%, Rabbit: 100%, Rat: 100%, Zebrafish: 90%
Characteristics:	This is a rabbit polyclonal antibody against MXD3. It was validated on Western Blot.
Purification:	Affinity Purified

## Target Details

Target:	MXD3
Alternative Name:	MXD3 ( <a href="#">MXD3 Products</a> )

## Target Details

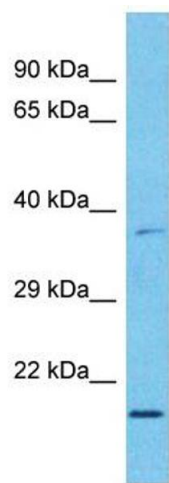
Background:	<p>MXD3 contains 1 basic helix-loop-helix (bHLH) domain. It is a transcriptional repressor and binds with MAX to form a sequence-specific DNA-binding protein complex which recognizes the core sequence 5'-CAC[GA]TG-3'. Antagonizes MYC transcriptional activity by competing for MAX and suppresses MYC dependent cell transformation.</p> <p>Protein Interaction Partner: NOTCH2NL, KRTAP10-7, UBC, NFKB1, MAGEA11, MAX, SIN3A, SMC3,</p> <p>Protein Size: 193</p>
Molecular Weight:	21 kDa
Gene ID:	83463

## Application Details

Restrictions:	For Research Use only
---------------	-----------------------

## Handling

Format:	Liquid
Concentration:	1 mg/mL
Buffer:	Liquid. Purified antibody supplied in 1x PBS buffer with 0.09 % (w/v) sodium azide and 2 % sucrose.
Preservative:	Sodium azide
Precaution of Use:	This product contains Sodium azide: a POISONOUS AND HAZARDOUS SUBSTANCE which should be handled by trained staff only.
Handling Advice:	Avoid repeat freeze-thaw cycles.
Storage:	-20 °C
Storage Comment:	For short term use, store at 2-8°C up to 1 week. For long term storage, store at -20°C in small aliquots to prevent freeze-thaw cycles.



Western Blotting

**Image 1.** Host: Rabbit Target Name: MXD3 Sample Type: Esophagus Tumor lysates Antibody Dilution: 1.0ug/ml