

Datasheet for ABIN2778381

anti-KLF16 antibody (Middle Region)[Go to Product page](#)**1** Image

Overview

Quantity:	100 µL
Target:	KLF16
Binding Specificity:	Middle Region
Reactivity:	Human, Mouse, Rat, Cow, Guinea Pig
Host:	Rabbit
Clonality:	Polyclonal
Conjugate:	This KLF16 antibody is un-conjugated
Application:	Western Blotting (WB)

Product Details

Immunogen:	The immunogen is a synthetic peptide directed towards the middle region of human KLF16
Sequence:	LAKHARRHPG FHPDLLRRPG ARSTSPSDSL PCSLAGSPAP SPAPSPAPAG
Predicted Reactivity:	Cow: 86%, Guinea Pig: 93%, Human: 100%, Mouse: 93%, Rat: 100%
Characteristics:	This is a rabbit polyclonal antibody against KLF16. It was validated on Western Blot using a cell lysate as a positive control.
Purification:	Affinity Purified

Target Details

Target:	KLF16
Alternative Name:	KLF16 (KLF16 Products)

Target Details

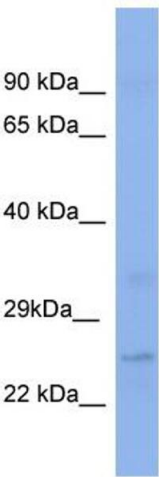
Background:	<p>KLF16 is a transcription factor that binds GC and GT boxes and displaces Sp1 and Sp3 from these sequences. KLF16 modulates dopaminergic transmission in the brain.</p> <p>Alias Symbols: BTEB4, DRRF, NSLP2</p> <p>Protein Interaction Partner: SUMO1, UBC, WASF2, SIN3A, SIN3B, EP300,</p> <p>Protein Size: 252</p>
Molecular Weight:	25 kDa
Gene ID:	83855
NCBI Accession:	NM_031918 , NP_114124
UniProt:	Q9B XK1

Application Details

Application Notes:	Optimal working dilutions should be determined experimentally by the investigator.
Comment:	Antigen size: 252 AA
Restrictions:	For Research Use only

Handling

Format:	Liquid
Concentration:	Lot specific
Buffer:	Liquid. Purified antibody supplied in 1x PBS buffer with 0.09 % (w/v) sodium azide and 2 % sucrose.
Preservative:	Sodium azide
Precaution of Use:	This product contains Sodium azide: a POISONOUS AND HAZARDOUS SUBSTANCE which should be handled by trained staff only.
Handling Advice:	Avoid repeated freeze-thaw cycles.
Storage:	-20 °C
Storage Comment:	For short term use, store at 2-8°C up to 1 week. For long term storage, store at -20°C in small aliquots to prevent freeze-thaw cycles.



Western Blotting

Image 1. WB Suggested Anti-KLF16 Antibody Titration: 0.2-1 ug/ml ELISA Titer: 1:62500 Positive Control: PANC1 cell lysate