

Datasheet for ABIN2778405
anti-MINA antibody (N-Term)[Go to Product page](#)

3 Images

Overview

Quantity:	100 µL
Target:	MINA
Binding Specificity:	N-Term
Reactivity:	Human, Rat, Rabbit, Horse, Pig
Host:	Rabbit
Clonality:	Polyclonal
Conjugate:	This MINA antibody is un-conjugated
Application:	Western Blotting (WB), Immunohistochemistry (IHC)

Product Details

Immunogen:	The immunogen is a synthetic peptide directed towards the N terminal region of human MINA
Sequence:	MPKKAKPTGS GKEEGPAPCK QMKLEAAGGP SALNFDSPSS LFESLISPIK
Predicted Reactivity:	Horse: 79%, Human: 100%, Pig: 86%, Rabbit: 79%, Rat: 79%
Characteristics:	This is a rabbit polyclonal antibody against MINA. It was validated on Western Blot and immunohistochemistry.
Purification:	Affinity Purified

Target Details

Target:	MINA
Alternative Name:	MINA (MINA Products)

Target Details

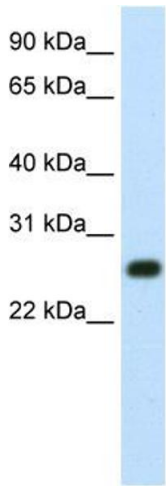
Background:	<p>MINA is a protein with a molecular weight of 53 kDa, which is localized in the nucleus and with part of the protein concentrated in the nucleolus. It is a direct target gene of Myc and is involved in mammalian cell proliferation.</p> <p>Alias Symbols: MDIG, NO52, MINA53</p> <p>Protein Interaction Partner: MINA, UBC, NAA16, TXNL1, APP, MYBBP1A, MYC,</p> <p>Protein Size: 280</p>
Molecular Weight:	32 kDa
Gene ID:	84864
NCBI Accession:	NM_153182 , NP_694822
UniProt:	Q8IUF6

Application Details

Application Notes:	Optimal working dilutions should be determined experimentally by the investigator.
Comment:	Antigen size: 280 AA
Restrictions:	For Research Use only

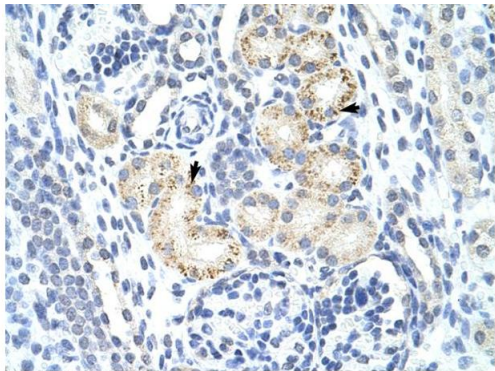
Handling

Format:	Liquid
Concentration:	Lot specific
Buffer:	Liquid. Purified antibody supplied in 1x PBS buffer with 0.09 % (w/v) sodium azide and 2 % sucrose.
Preservative:	Sodium azide
Precaution of Use:	This product contains Sodium azide: a POISONOUS AND HAZARDOUS SUBSTANCE which should be handled by trained staff only.
Handling Advice:	Avoid repeated freeze-thaw cycles.
Storage:	-20 °C
Storage Comment:	For short term use, store at 2-8°C up to 1 week. For long term storage, store at -20°C in small aliquots to prevent freeze-thaw cycles.



Western Blotting

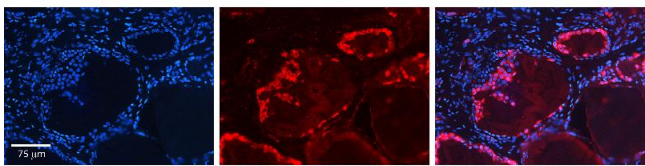
Image 1. WB Suggested Anti-MINA Antibody Titration:
1.25ug/ml Positive Control: HepG2 cell lysate



Rabbit Anti-MINA Antibody
Catalog Number: ARP39721
Lot Number: QC9127
Paraffin Embedded Tissue: Human Kidney
Cells with Positive label: Epithelial cells of renal tubule (Indicated with Arrows)
Antibody Concentration: 4.0-8.0 µg/ml
Magnification: 400X

Immunohistochemistry

Image 2. Human kidney



Immunohistochemistry

Image 3. Rabbit Anti-MINA Antibody Formalin Fixed Paraffin Embedded Tissue: Human Thyroid Tissue Observed Staining: Cytoplasm in follicular cells Primary Antibody Concentration: 1:100 Other Working Concentrations: N/A Secondary Antibody: Donkey anti-Rabbit-Cy3 Secondary Antibody Concentration: 1:200 Magnification: 20X Exposure Time: 0.5 - 2.0 sec