

Datasheet for ABIN2778407
anti-MINA antibody (C-Term)[Go to Product page](#)

2 Images

Overview

Quantity:	100 µL
Target:	MINA
Binding Specificity:	C-Term
Reactivity:	Human, Mouse, Rat, Rabbit, Horse, Pig, Dog, Cow, Guinea Pig
Host:	Rabbit
Clonality:	Polyclonal
Conjugate:	This MINA antibody is un-conjugated
Application:	Western Blotting (WB)

Product Details

Immunogen:	The immunogen is a synthetic peptide directed towards the C terminal region of human MINA
Sequence:	HGLRFPLSHL DALKQIWNSP AISVKDLKLT TDEEKESLVL SLWTECLIQV
Predicted Reactivity:	Cow: 92%, Dog: 100%, Guinea Pig: 92%, Horse: 100%, Human: 100%, Mouse: 92%, Pig: 93%, Rabbit: 100%, Rat: 100%
Characteristics:	This is a rabbit polyclonal antibody against MINA. It was validated on Western Blot using a cell lysate as a positive control.
Purification:	Protein A purified

Target Details

Target:	MINA
---------	------

Target Details

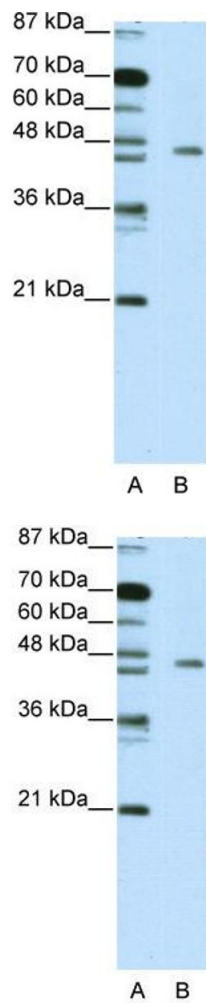
Alternative Name:	MINA (MINA Products)
Background:	<p>MINA protein is directly involved in ribosome biogenesis, most likely during the assembly process of preribosomal particles. MINA is also involved in cell proliferation. MINA may have a role in esophageal squamous cell carcinoma, colon cancer and lung cancer</p> <p>Alias Symbols: MDIG, NO52, MINA53</p> <p>Protein Interaction Partner: MINA, UBC, NAA16, TXNL1, APP, MYBBP1A, MYC,</p> <p>Protein Size: 464</p>
Molecular Weight:	53 kDa
Gene ID:	84864
NCBI Accession:	NM_032778 , NP_116167
UniProt:	Q96KB0

Application Details

Application Notes:	Optimal working dilutions should be determined experimentally by the investigator.
Comment:	Antigen size: 464 AA
Restrictions:	For Research Use only

Handling

Format:	Liquid
Concentration:	Lot specific
Buffer:	Liquid. Purified antibody supplied in 1x PBS buffer with 0.09 % (w/v) sodium azide and 2 % sucrose.
Preservative:	Sodium azide
Precaution of Use:	This product contains Sodium azide: a POISONOUS AND HAZARDOUS SUBSTANCE which should be handled by trained staff only.
Handling Advice:	Avoid repeated freeze-thaw cycles.
Storage:	-20 °C
Storage Comment:	For short term use, store at 2-8°C up to 1 week. For long term storage, store at -20°C in small aliquots to prevent freeze-thaw cycles.



Western Blotting

Image 1. WB Suggested Anti-MINA Antibody Titration: 5.0ug/ml ELISA Titer: 1:12500 Positive Control: Jurkat cell lysate MINA is supported by BioGPS gene expression data to be expressed in Jurkat

Western Blotting

Image 2. WB Suggested Anti-MINA Antibody Titration: 5.0 µg/mL ELISA Titer: 1:12500 Positive Control: Jurkat cell lysate MINA is supported by BioGPS gene expression data to be expressed in Jurkat