

Datasheet for ABIN2778414
anti-ZNF566 antibody (Middle Region)[Go to Product page](#)

1 Image

1 Publication

Overview

Quantity:	100 µL
Target:	ZNF566
Binding Specificity:	Middle Region
Reactivity:	Human, Cow, Horse, Rat, Dog, Pig, Rabbit
Host:	Rabbit
Clonality:	Polyclonal
Conjugate:	This ZNF566 antibody is un-conjugated
Application:	Western Blotting (WB)

Product Details

Immunogen:	The immunogen is a synthetic peptide directed towards the middle region of human ZNF566
Sequence:	ECKICGKAYS QSSQLISHHR IHTSEKPYEY RECGKNFNVD PQLIQHQNLY
Predicted Reactivity:	Cow: 79%, Dog: 79%, Horse: 79%, Human: 100%, Pig: 79%, Rabbit: 86%, Rat: 93%
Characteristics:	This is a rabbit polyclonal antibody against ZNF566. It was validated on Western Blot using a cell lysate as a positive control.
Purification:	Affinity Purified

Target Details

Target:	ZNF566
Alternative Name:	ZNF566 (ZNF566 Products)

Target Details

Background:	ZNF566 may be involved in transcriptional regulation. Alias Symbols: FLJ14779, MGC12515 Protein Interaction Partner: KIF2C, CBX5, UBD, SMARCAD1, UBC, Trim28, Protein Size: 418
Molecular Weight:	49 kDa
Gene ID:	84924
NCBI Accession:	NM_032838 , NP_116227
UniProt:	Q969W8

Application Details

Application Notes:	Optimal working dilutions should be determined experimentally by the investigator.
Comment:	Antigen size: 418 AA
Restrictions:	For Research Use only

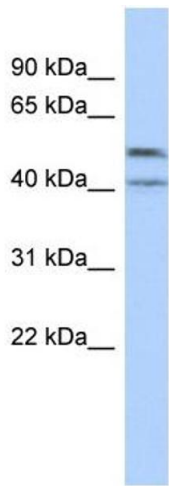
Handling

Format:	Liquid
Concentration:	Lot specific
Buffer:	Liquid. Purified antibody supplied in 1x PBS buffer with 0.09 % (w/v) sodium azide and 2 % sucrose.
Preservative:	Sodium azide
Precaution of Use:	This product contains Sodium azide: a POISONOUS AND HAZARDOUS SUBSTANCE which should be handled by trained staff only.
Handling Advice:	Avoid repeated freeze-thaw cycles.
Storage:	-20 °C
Storage Comment:	For short term use, store at 2-8°C up to 1 week. For long term storage, store at -20°C in small aliquots to prevent freeze-thaw cycles.

Publications

Product cited in:	Yomo, Hongo, Kuroyanagi, Kobayashi: "Parkinsonism and midbrain dysfunction after shunt placement for obstructive hydrocephalus." in: Journal of clinical neuroscience : official journal
-------------------	---

Images



Western Blotting

Image 1. WB Suggested Anti-ZNF566 Antibody Titration:
0.2-1 ug/ml ELISA Titer: 1:312500 Positive Control:
COLO205 cell lysate