

Datasheet for ABIN2778415
anti-MLXIPL antibody (N-Term)[Go to Product page](#)

2 Images

Overview

Quantity:	100 µL
Target:	MLXIPL
Binding Specificity:	N-Term
Reactivity:	Human, Rat, Mouse, Cow, Guinea Pig
Host:	Rabbit
Clonality:	Polyclonal
Conjugate:	This MLXIPL antibody is un-conjugated
Application:	Western Blotting (WB), Immunohistochemistry (IHC)

Product Details

Immunogen:	The immunogen is a synthetic peptide directed towards the N terminal region of human MLXIPL
Sequence:	MAGALAGLAA GLQVPRVAPS PDSDSDTDSE DPSLRRSAGG LLRSQVIHSG
Predicted Reactivity:	Cow: 86%, Guinea Pig: 86%, Human: 100%, Mouse: 93%, Rat: 93%
Characteristics:	This is a rabbit polyclonal antibody against MLXIPL. It was validated on Western Blot and immunohistochemistry.
Purification:	Protein A purified

Target Details

Target:	MLXIPL
---------	--------

Target Details

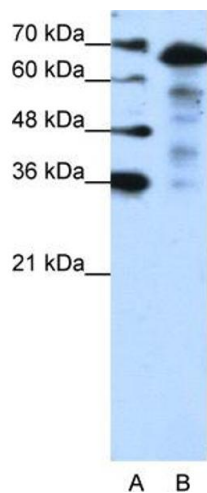
Alternative Name:	MLXIPL (MLXIPL Products)
Background:	<p>MLXIPL is a basic helix-loop-helix leucine zipper transcription factor of the Myc/Max/Mad superfamily. This protein forms a heterodimeric complex and binds and activates, in a glucose-dependent manner, carbohydrate response element (ChoRE) motifs in the promoters of triglyceride synthesis genes.</p> <p>Alias Symbols: MIO, CHREBP, MONDOB, WBSCR14, WS-bHLH, bHLHd14</p> <p>Protein Interaction Partner: GRB2, MLX, NIF3L1,</p> <p>Protein Size: 575</p>
Molecular Weight:	63 kDa
Gene ID:	51085
NCBI Accession:	NM_032951
Pathways:	Carbohydrate Homeostasis , Regulation of Carbohydrate Metabolic Process

Application Details

Application Notes:	Optimal working dilutions should be determined experimentally by the investigator.
Comment:	Antigen size: 575 AA
Restrictions:	For Research Use only

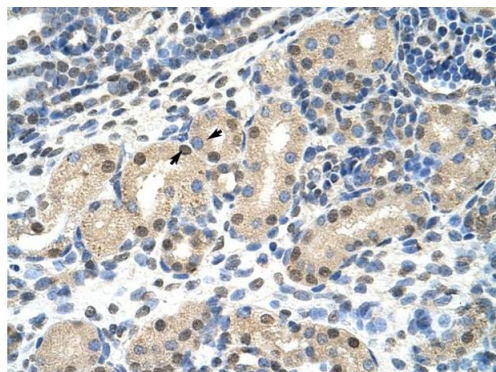
Handling

Format:	Liquid
Concentration:	Lot specific
Buffer:	Liquid. Purified antibody supplied in 1x PBS buffer with 0.09 % (w/v) sodium azide and 2 % sucrose.
Preservative:	Sodium azide
Precaution of Use:	This product contains Sodium azide: a POISONOUS AND HAZARDOUS SUBSTANCE which should be handled by trained staff only.
Handling Advice:	Avoid repeated freeze-thaw cycles.
Storage:	-20 °C
Storage Comment:	For short term use, store at 2-8°C up to 1 week. For long term storage, store at -20°C in small aliquots to prevent freeze-thaw cycles.



Western Blotting

Image 1. WB Suggested Anti-MLXIPL Antibody Titration:
1.25ug/ml Positive Control: Jurkat cell lysate



Rabbit Anti-MLXIPL Antibody
Catalog Number: ARP39736
Lot Number: QC10419
Paraffin Embedded Tissue: Human Kidney
Cells with Positive label: Epithelial cells of renal tubule (Indicated with Arrows)
Antibody Concentration: 4.0-8.0 µg/ml
Magnification: 400X

Immunohistochemistry

Image 2. Human kidney