

Datasheet for ABIN2778424
anti-ZNF682 antibody (N-Term)



[Go to Product page](#)

1 Image

Overview

Quantity:	100 µL
Target:	ZNF682
Binding Specificity:	N-Term
Reactivity:	Human, Mouse, Rat, Cow, Dog, Pig, Rabbit
Host:	Rabbit
Clonality:	Polyclonal
Conjugate:	This ZNF682 antibody is un-conjugated
Application:	Western Blotting (WB)

Product Details

Immunogen:	The immunogen is a synthetic peptide directed towards the N terminal region of human ZNF682
Sequence:	ENYRNLVSLG LTVSKPELIS RLEQRQEPWN VKRHETIAKP PAMSSHYTED
Predicted Reactivity:	Cow: 85%, Dog: 92%, Human: 100%, Mouse: 92%, Pig: 92%, Rabbit: 92%, Rat: 92%
Characteristics:	This is a rabbit polyclonal antibody against ZNF682. It was validated on Western Blot using a cell lysate as a positive control.
Purification:	Protein A purified

Target Details

Target:	ZNF682
---------	--------

Target Details

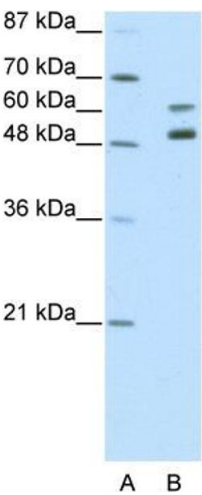
Alternative Name:	ZNF682 (ZNF682 Products)
Background:	<p>ZNF682 contains 1 KRAB domain and 11 C2H2-type zinc fingers and belongs to the krueppel C2H2-type zinc-finger protein family. ZNF682 may be involved in transcriptional regulation.</p> <p>Alias Symbols: BC39498_3</p> <p>Protein Interaction Partner: UBC,</p> <p>Protein Size: 498</p>
Molecular Weight:	58 kDa
Gene ID:	91120
NCBI Accession:	NM_033196 , NP_149973
UniProt:	O95780

Application Details

Application Notes:	Optimal working dilutions should be determined experimentally by the investigator.
Comment:	Antigen size: 498 AA
Restrictions:	For Research Use only

Handling

Format:	Liquid
Concentration:	Lot specific
Buffer:	Liquid. Purified antibody supplied in 1x PBS buffer with 0.09 % (w/v) sodium azide and 2 % sucrose.
Preservative:	Sodium azide
Precaution of Use:	This product contains Sodium azide: a POISONOUS AND HAZARDOUS SUBSTANCE which should be handled by trained staff only.
Handling Advice:	Avoid repeated freeze-thaw cycles.
Storage:	-20 °C
Storage Comment:	For short term use, store at 2-8°C up to 1 week. For long term storage, store at -20°C in small aliquots to prevent freeze-thaw cycles.



Western Blotting

Image 1. WB Suggested Anti-ZNF682 Antibody Titration:
2.5ug/ml ELISA Titer: 1:12500 Positive Control: Jurkat cell lysate