

Datasheet for ABIN2778429
anti-FOXQ1 antibody (N-Term)



[Go to Product page](#)

2 Images

Overview

Quantity:	100 µL
Target:	FOXQ1
Binding Specificity:	N-Term
Reactivity:	Human
Host:	Rabbit
Clonality:	Polyclonal
Conjugate:	This FOXQ1 antibody is un-conjugated
Application:	Western Blotting (WB), Immunohistochemistry (IHC)

Product Details

Immunogen:	The immunogen is a synthetic peptide directed towards the N terminal region of human FOXQ1
Sequence:	PSPLSAAGDD SLGSDGDCAA NSPAAGGGAR DPPGDGEQSA GGGPGAEEAI
Predicted Reactivity:	Human: 86%
Characteristics:	This is a rabbit polyclonal antibody against FOXQ1. It was validated on Western Blot and immunohistochemistry.
Purification:	Protein A purified

Target Details

Target:	FOXQ1
Alternative Name:	FOXQ1 (FOXQ1 Products)

Target Details

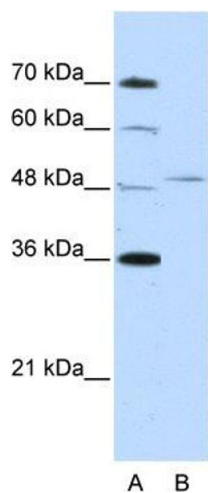
Background:	FOXQ1 contains 1 fork-head DNA-binding domain. FOXQ1 mediates the interaction of Akt/protein kinase B with TGFb2. Foxq1 regulates differentiation of hair in satin mice. Alias Symbols: HFH1 Protein Interaction Partner: Dlg4, Protein Size: 403
Molecular Weight:	41 kDa
Gene ID:	94234
NCBI Accession:	NM_033260 , NP_150285
UniProt:	Q9C009
Pathways:	Positive Regulation of Endopeptidase Activity

Application Details

Application Notes:	Optimal working dilutions should be determined experimentally by the investigator.
Comment:	Antigen size: 403 AA
Restrictions:	For Research Use only

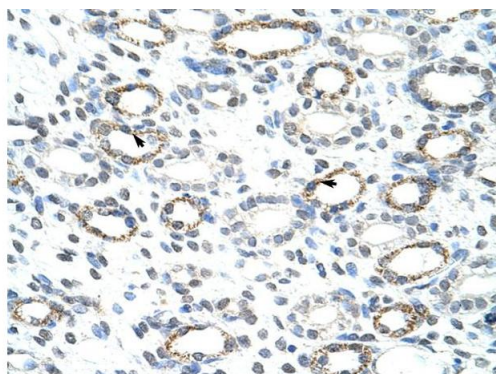
Handling

Format:	Liquid
Concentration:	Lot specific
Buffer:	Liquid. Purified antibody supplied in 1x PBS buffer with 0.09 % (w/v) sodium azide and 2 % sucrose.
Preservative:	Sodium azide
Precaution of Use:	This product contains Sodium azide: a POISONOUS AND HAZARDOUS SUBSTANCE which should be handled by trained staff only.
Handling Advice:	Avoid repeated freeze-thaw cycles.
Storage:	-20 °C
Storage Comment:	For short term use, store at 2-8°C up to 1 week. For long term storage, store at -20°C in small aliquots to prevent freeze-thaw cycles.



Western Blotting

Image 1. WB Suggested Anti-FOXQ1 Antibody Titration:
2.5ug/ml Positive Control: Jurkat cell lysate



Rabbit Anti-FOXQ1 Antibody
Catalog Number: ARP39755
Lot Number: QC10425
Paraffin Embedded Tissue: Human Kidney
Cells with Positive label: Epithelial cells of renal tubule (Indicated with Arrows)
Antibody Concentration: 4.0-8.0 µg/ml
Magnification: 400X

Immunohistochemistry

Image 2. Human kidney