

Datasheet for ABIN2778437
anti-NAC1 antibody (C-Term)[Go to Product page](#)

3 Images

Overview

Quantity:	100 µL
Target:	NAC1 (NACC1)
Binding Specificity:	C-Term
Reactivity:	Human, Rat, Mouse, Dog, Cow, Horse, Pig, Guinea Pig
Host:	Rabbit
Clonality:	Polyclonal
Conjugate:	This NAC1 antibody is un-conjugated
Application:	Western Blotting (WB), Immunohistochemistry (IHC)

Product Details

Immunogen:	The immunogen is a synthetic peptide directed towards the C terminal region of human BTBD14B
Sequence:	WMPKVKVLKA EDDAYTTFIS ETGKIEPDMM GVEHGFETAS HEGEAGPSAE
Predicted Reactivity:	Cow: 93%, Dog: 93%, Guinea Pig: 92%, Horse: 79%, Human: 100%, Mouse: 93%, Pig: 93%, Rat: 93%
Characteristics:	This is a rabbit polyclonal antibody against BTBD14B. It was validated on Western Blot and immunohistochemistry.
Purification:	Protein A purified

Target Details

Target:	NAC1 (NACC1)
---------	--------------

Target Details

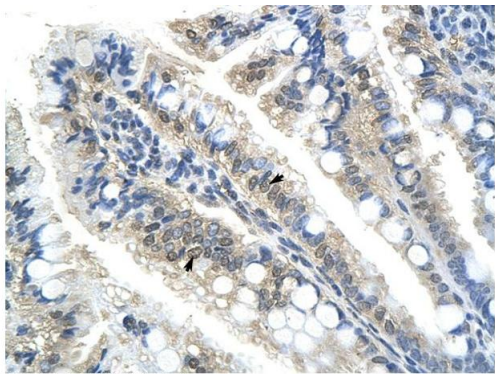
Alternative Name:	BTBD14B (NACC1 Products)
Background:	<p>The function of the Anti-BTBD14B gene has not yet been determined</p> <p>Alias Symbols: NAC1, BEND8, NAC-1, BTBD14B</p> <p>Protein Interaction Partner: SUMO2, UBC, PARK2, STRN3, KPNA4, KPNA3, TARDBP, NACC1, BCOR, KLHL2, ZBTB6, HDAC4, HDAC3, ENC1, ZBTB14, BCL6, CUL3, CUL4A, PSMD7,</p> <p>Protein Size: 527</p>
Molecular Weight:	57 kDa
Gene ID:	112939
NCBI Accession:	NM_052876 , NP_443108
UniProt:	Q96RE7

Application Details

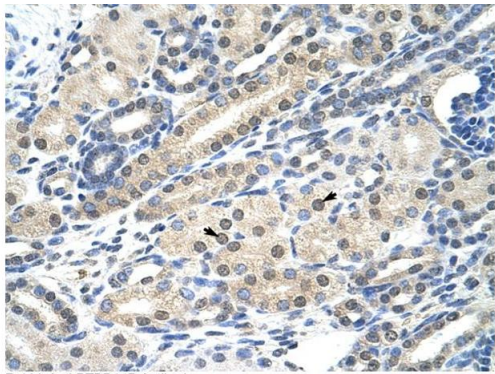
Application Notes:	Optimal working dilutions should be determined experimentally by the investigator.
Comment:	Antigen size: 527 AA
Restrictions:	For Research Use only

Handling

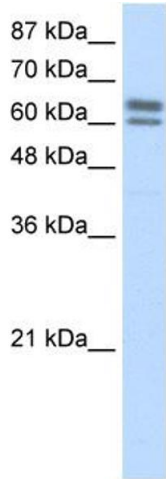
Format:	Liquid
Concentration:	Lot specific
Buffer:	Liquid. Purified antibody supplied in 1x PBS buffer with 0.09 % (w/v) sodium azide and 2 % sucrose.
Preservative:	Sodium azide
Precaution of Use:	This product contains Sodium azide: a POISONOUS AND HAZARDOUS SUBSTANCE which should be handled by trained staff only.
Handling Advice:	Avoid repeated freeze-thaw cycles.
Storage:	-20 °C
Storage Comment:	For short term use, store at 2-8°C up to 1 week. For long term storage, store at -20°C in small aliquots to prevent freeze-thaw cycles.



Rabbit Anti-BTBD14B Antibody
Catalog Number: ARP39772
Lot Number: QC10890
Paraffin Embedded Tissue: Human Intestine
Cells with Positive label: Epithelial cells of intestinal villus (Indicated with Arrows)
Antibody Concentration: 4.0-8.0 µg/ml
Magnification: 400X



Rabbit Anti-BTBD14B Antibody
Catalog Number: ARP39772
Lot Number: QC10890
Paraffin Embedded Tissue: Human Kidney
Cells with Positive label: Epithelial cells of renal tubule (Indicated with Arrows)
Antibody Concentration: 4.0-8.0 µg/ml
Magnification: 400X



Immunohistochemistry

Image 1. Human Intestine

Immunohistochemistry

Image 2. Human kidney

Western Blotting

Image 3. WB Suggested Anti-BTBD14B Antibody Titration:
5.0ug/ml Positive Control: HepG2 cell lysate