

Datasheet for ABIN2778441
anti-MSL3 antibody (N-Term)



[Go to Product page](#)

1 Image

Overview

Quantity:	100 µL
Target:	MSL3
Binding Specificity:	N-Term
Reactivity:	Human, Mouse, Rat, Dog, Cow, Guinea Pig
Host:	Rabbit
Clonality:	Polyclonal
Conjugate:	This MSL3 antibody is un-conjugated
Application:	Western Blotting (WB)

Product Details

Immunogen:	The immunogen is a synthetic peptide directed towards the N terminal region of human MSL3L1
Sequence:	MSASEGMKFK FHSGEKVLCF EPDPTKARVL YDAKIVDVIV GKDEKGRKIP
Predicted Reactivity:	Cow: 100%, Dog: 100%, Guinea Pig: 100%, Human: 100%, Mouse: 100%, Rat: 86%
Characteristics:	This is a rabbit polyclonal antibody against MSL3L1. It was validated on Western Blot using a cell lysate as a positive control.
Purification:	Affinity Purified

Target Details

Target:	MSL3
---------	------

Target Details

Alternative Name:	MSL3L1 (MSL3 Products)
Background:	<p>MSL3L1 is a nuclear protein, which is thought to play a similar function in chromatin remodeling and transcriptional regulation. This gene has been found to undergo X inactivation. This gene encodes a nuclear protein and has similarity to drosophila male-specific lethal-3 gene. The drosophila protein plays a critical role in a dosage-compensation pathway, which equalizes X-linked gene expression in males and females. Thus this encoded protein is thought to play a similar function in chromatin remodeling and transcriptional regulation. This gene has been found to undergo X inactivation. There are four alternatively spliced transcript variants of this gene encoding different isoforms.</p> <p>Alias Symbols: DKFZP586J1822, MSL3L1</p> <p>Protein Interaction Partner: PAF1, DYRK1B, SOX2, UBC, CDK6, APP, HIST4H4, HIST3H3, MSL1, KAT8, PRKDC, MSL2, HIST1H4A, HIST1H3A,</p> <p>Protein Size: 521</p>
Molecular Weight:	60 kDa
Gene ID:	10943
NCBI Accession:	NM_078629 , NP_523353
UniProt:	Q8N5Y2

Application Details

Application Notes:	Optimal working dilutions should be determined experimentally by the investigator.
Comment:	Antigen size: 521 AA
Restrictions:	For Research Use only

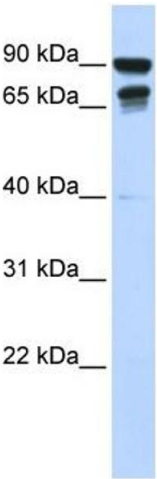
Handling

Format:	Liquid
Concentration:	Lot specific
Buffer:	Liquid. Purified antibody supplied in 1x PBS buffer with 0.09 % (w/v) sodium azide and 2 % sucrose.
Preservative:	Sodium azide
Precaution of Use:	This product contains Sodium azide: a POISONOUS AND HAZARDOUS SUBSTANCE which should be handled by trained staff only.

Handling

Handling Advice:	Avoid repeated freeze-thaw cycles.
Storage:	-20 °C
Storage Comment:	For short term use, store at 2-8°C up to 1 week. For long term storage, store at -20°C in small aliquots to prevent freeze-thaw cycles.

Images



Western Blotting

Image 1. WB Suggested Anti-MSL3L1 Antibody Titration: 0.2-1 ug/ml ELISA Titer: 1:62500 Positive Control: 293T cell lysate MSL3 is supported by BioGPS gene expression data to be expressed in HEK293T