

Datasheet for ABIN2778442  
**anti-MSL3 antibody (C-Term)**[Go to Product page](#)

## 1 Image

## Overview

|                      |  |
|----------------------|--|
| Quantity:            | 100 µL   |
| Target:              | MSL3   |
| Binding Specificity: | C-Term   |
| Reactivity:          | Human, Mouse, Rat, Dog, Cow, Guinea Pig, Horse, Rabbit |
| Host:                | Rabbit   |
| Clonality:           | Polyclonal   |
| Conjugate:           | This MSL3 antibody is un-conjugated                    |
| Application:         | Western Blotting (WB)                                  |

## Product Details

|                       |  |
|-----------------------|--|
| Immunogen:            | The immunogen is a synthetic peptide directed towards the C terminal region of human MSL3L1                                      |
| Sequence:             | FSEKNLKALL KHFDLFLRFL AEYHDDFFPE SAYVAACEAH YSTKNPRAIY   |
| Predicted Reactivity: | Cow: 100%, Dog: 100%, Guinea Pig: 100%, Horse: 100%, Human: 100%, Mouse: 100%, Rabbit: 100%, Rat: 100%                           |
| Characteristics:      | This is a rabbit polyclonal antibody against MSL3L1. It was validated on Western Blot using a cell lysate as a positive control. |
| Purification:         | Protein A purified   |

## Target Details

|         |      |
|---------|------|
| Target: | MSL3 |
|---------|------|

## Target Details

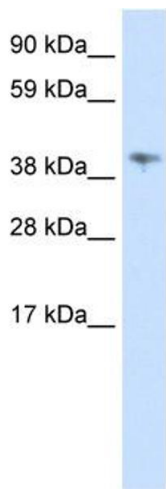
|                   |  |
|-------------------|--|
| Alternative Name: | MSL3L1 ( <a href="#">MSL3 Products</a> )   |
| Background:       | <p>MSL3L1 is a nuclear protein, which is thought to play a similar function in chromatin remodeling and transcriptional regulation. This gene has been found to undergo X inactivation.</p> <p>Alias Symbols: MSL3L1</p> <p>Protein Interaction Partner: PAF1, DYRK1B, SOX2, UBC, CDK6, APP, HIST4H4, HIST3H3, MSL1, KAT8, PRKDC, MSL2, HIST1H4A, HIST1H3A,</p> <p>Protein Size: 355</p> |
| Molecular Weight: | 41 kDa   |
| Gene ID:          | 10943  |
| NCBI Accession:   | <a href="#">NM_006800</a> , <a href="#">NP_006791</a>  |
| UniProt:          | <a href="#">Q5T295</a>   |

## Application Details

|                    |  |
|--------------------|--|
| Application Notes: | Optimal working dilutions should be determined experimentally by the investigator. |
| Comment:           | Antigen size: 355 AA   |
| Restrictions:      | For Research Use only  |

## Handling

|                    |   |
|--------------------|---|
| Format:            | Liquid  |
| Concentration:     | Lot specific  |
| Buffer:            | Liquid. Purified antibody supplied in 1x PBS buffer with 0.09 % (w/v) sodium azide and 2 % sucrose.                                     |
| Preservative:      | Sodium azide  |
| Precaution of Use: | This product contains Sodium azide: a POISONOUS AND HAZARDOUS SUBSTANCE which should be handled by trained staff only.                  |
| Handling Advice:   | Avoid repeated freeze-thaw cycles.  |
| Storage:           | -20 °C  |
| Storage Comment:   | For short term use, store at 2-8°C up to 1 week. For long term storage, store at -20°C in small aliquots to prevent freeze-thaw cycles. |



Western Blotting

**Image 1.** WB Suggested Anti-MSL3L1 Antibody Titration:  
0.625ug/ml ELISA Titer: 1:62500 Positive Control: Human Spleen