



[Go to Product page](#)

Datasheet for ABIN2778443  
**anti-DACH1 antibody (N-Term)**

3 Images

Overview

Quantity:	100 µL
Target:	DACH1
Binding Specificity:	N-Term
Reactivity:	Human, Mouse, Pig, Saccharomyces cerevisiae
Host:	Rabbit
Clonality:	Polyclonal
Conjugate:	This DACH1 antibody is un-conjugated
Application:	Western Blotting (WB)

Product Details

Immunogen:	The immunogen is a synthetic peptide directed towards the N terminal region of human DACH1
Sequence:	MAVPAALIPP TQLVPPQPPI STSASSSGTT TSTSSATSSP APSIGPPASS
Predicted Reactivity:	Human: 100%, Mouse: 100%, Pig: 93%, Yeast: 79%
Characteristics:	This is a rabbit polyclonal antibody against DACH1. It was validated on Western Blot using a cell lysate as a positive control.
Purification:	Affinity Purified

Target Details

Target:	DACH1
Alternative Name:	DACH1 ( <a href="#">DACH1 Products</a> )

## Target Details

---

Background:	<p>This gene encodes a chromatin-associated protein that associates with other DNA-binding transcription factors to regulate gene expression and cell fate determination during development. The protein contains a Ski domain that is highly conserved from Drosophila.</p> <p>Alias Symbols: DACH, FLJ10138</p> <p>Protein Interaction Partner: C1orf35, NAGK, ZCCHC10, U2AF2, AHCYL1, RNF14, PPIG, FGF12, DACH1, UBE2I, SMAD4, SMAD3, SIN3A, NCOR1, UBC, JUN, CREB1, HDAC3, HDAC1, EYA3, EYA1, SIX1, CREBBP,</p> <p>Protein Size: 558</p>
Molecular Weight:	57 kDa
Gene ID:	1602
NCBI Accession:	<a href="#">NM_080760</a> , <a href="#">NP_542938</a>
Pathways:	<a href="#">Feeding Behaviour</a>

## Application Details

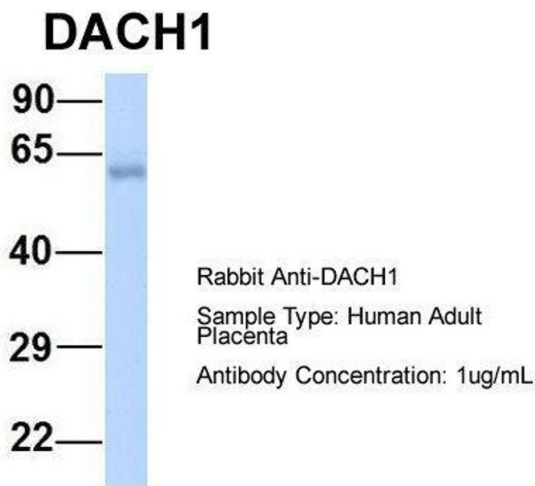
---

Application Notes:	Optimal working dilutions should be determined experimentally by the investigator.
Comment:	Antigen size: 558 AA
Restrictions:	For Research Use only

## Handling

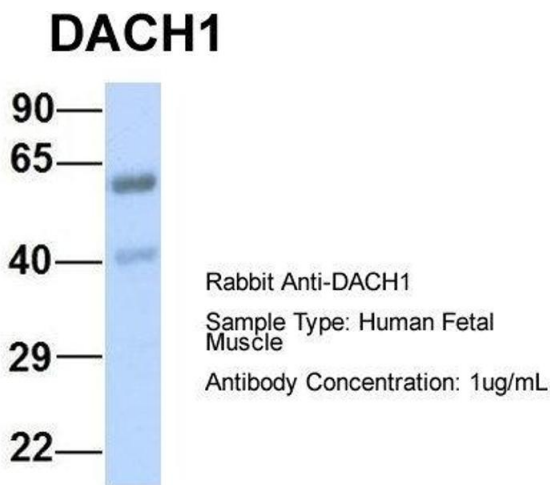
---

Format:	Liquid
Concentration:	Lot specific
Buffer:	Liquid. Purified antibody supplied in 1x PBS buffer with 0.09 % (w/v) sodium azide and 2 % sucrose.
Preservative:	Sodium azide
Precaution of Use:	This product contains Sodium azide: a POISONOUS AND HAZARDOUS SUBSTANCE which should be handled by trained staff only.
Handling Advice:	Avoid repeated freeze-thaw cycles.
Storage:	-20 °C
Storage Comment:	For short term use, store at 2-8°C up to 1 week. For long term storage, store at -20°C in small aliquots to prevent freeze-thaw cycles.



#### Western Blotting

**Image 1.** Host: Rabbit Target Name: DACH1 Sample Type: Human Adult Placenta Antibody Dilution: 1.0ug/ml



#### Western Blotting

**Image 2.** Host: Rabbit Target Name: DACH1 Sample Type: Human Fetal Muscle Antibody Dilution: 1.0ug/ml



#### Western Blotting

**Image 3.** WB Suggested Anti-DACH1 Antibody Titration: 0.2-1 ug/ml ELISA Titer: 1:62500 Positive Control: HT1080 cell lysate