

Datasheet for ABIN2778450  
**anti-SLC26A10 antibody (N-Term)**[Go to Product page](#)

## 1 Image

## Overview

Quantity:	100 µL
Target:	SLC26A10
Binding Specificity:	N-Term
Reactivity:	Human
Host:	Rabbit
Clonality:	Polyclonal
Conjugate:	This SLC26A10 antibody is un-conjugated
Application:	Western Blotting (WB)

## Product Details

Immunogen:	The immunogen is a synthetic peptide directed towards the N terminal region of human SLC26A10
Sequence:	MRLDLASLMS APKSLGSAFK SWRLDKAPSP QHTFPSTSIP GMAFALLASV
Predicted Reactivity:	Human: 100%
Characteristics:	This is a rabbit polyclonal antibody against SLC26A10. It was validated on Western Blot using a cell lysate as a positive control.
Purification:	Affinity Purified

## Target Details

Target:	SLC26A10
---------	----------

## Target Details

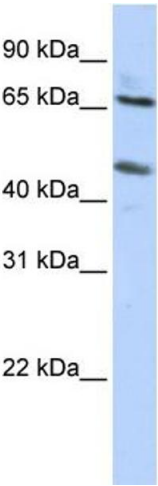
Alternative Name:	SLC26A10 ( <a href="#">SLC26A10 Products</a> )
Background:	SLC26A10 is a chloride/bicarbonate exchanger. Alias Symbols: - Protein Size: 563
Molecular Weight:	60 kDa
Gene ID:	65012
NCBI Accession:	<a href="#">NM_133489</a> , <a href="#">NP_597996</a>
UniProt:	<a href="#">Q8NG04</a>

## Application Details

Application Notes:	Optimal working dilutions should be determined experimentally by the investigator.
Comment:	Antigen size: 563 AA
Restrictions:	For Research Use only

## Handling

Format:	Liquid
Concentration:	Lot specific
Buffer:	Liquid. Purified antibody supplied in 1x PBS buffer with 0.09 % (w/v) sodium azide and 2 % sucrose.
Preservative:	Sodium azide
Precaution of Use:	This product contains Sodium azide: a POISONOUS AND HAZARDOUS SUBSTANCE which should be handled by trained staff only.
Handling Advice:	Avoid repeated freeze-thaw cycles.
Storage:	-20 °C
Storage Comment:	For short term use, store at 2-8°C up to 1 week. For long term storage, store at -20°C in small aliquots to prevent freeze-thaw cycles.



Western Blotting

**Image 1.** WB Suggested Anti-SLC26A10 Antibody Titration:  
0.2-1 ug/ml ELISA Titer: 1:62500 Positive Control: HepG2  
cell lysate