

Datasheet for ABIN2778481
anti-ZSCAN20 antibody (N-Term)[Go to Product page](#)

1 Image

Overview

Quantity:	100 µL
Target:	ZSCAN20
Binding Specificity:	N-Term
Reactivity:	Human, Cow, Horse, Dog, Pig
Host:	Rabbit
Clonality:	Polyclonal
Conjugate:	This ZSCAN20 antibody is un-conjugated
Application:	Western Blotting (WB)

Product Details

Immunogen:	The immunogen is a synthetic peptide directed towards the N terminal region of human ZNF31
Sequence:	MAMALELQAQ ASPQPEPEEL LIVKLEEDSW GSESKLWEKD RGSVSGPEAS
Predicted Reactivity:	Cow: 79%, Dog: 92%, Horse: 92%, Human: 100%, Pig: 85%
Characteristics:	This is a rabbit polyclonal antibody against ZNF31. It was validated on Western Blot using a cell lysate as a positive control.
Purification:	Protein A purified

Target Details

Target:	ZSCAN20
Alternative Name:	ZNF31 (ZSCAN20 Products)

Target Details

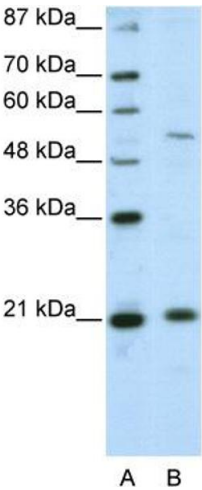
Background:	ZNF31 contains 1 KRAB domain and 10 C2H2-type zinc fingers. ZNF31 belongs to the krueppel C2H2-type zinc-finger protein family and may be involved in transcriptional regulation. Alias Symbols: KOX29, ZNF31, ZFP-31, ZNF360 Protein Interaction Partner: BAG3, UBC, SCAND1, Protein Size: 433
Molecular Weight:	49 kDa
Gene ID:	7579
NCBI Accession:	NM_145238
UniProt:	Q96FA9
Pathways:	Chromatin Binding

Application Details

Application Notes:	Optimal working dilutions should be determined experimentally by the investigator.
Comment:	Antigen size: 433 AA
Restrictions:	For Research Use only

Handling

Format:	Liquid
Concentration:	Lot specific
Buffer:	Liquid. Purified antibody supplied in 1x PBS buffer with 0.09 % (w/v) sodium azide and 2 % sucrose.
Preservative:	Sodium azide
Precaution of Use:	This product contains Sodium azide: a POISONOUS AND HAZARDOUS SUBSTANCE which should be handled by trained staff only.
Handling Advice:	Avoid repeated freeze-thaw cycles.
Storage:	-20 °C
Storage Comment:	For short term use, store at 2-8°C up to 1 week. For long term storage, store at -20°C in small aliquots to prevent freeze-thaw cycles.



Western Blotting

Image 1. WB Suggested Anti-ZNF31 Antibody Titration:
2.5ug/ml ELISA Titer: 1:62500 Positive Control: HepG2 cell
lysate