



[Go to Product page](#)

Datasheet for ABIN2778500
anti-KBTBD5 antibody (N-Term)

1 Image

Overview

Quantity:	100 µL
Target:	KBTBD5
Binding Specificity:	N-Term
Reactivity:	Human, Horse, Guinea Pig, Rabbit, Cow, Dog, Mouse, Rat
Host:	Rabbit
Clonality:	Polyclonal
Conjugate:	This KBTBD5 antibody is un-conjugated
Application:	Western Blotting (WB)

Product Details

Sequence:	LGLEQAEER LYQQTLLQDG LKDMLDHGKF LDCVVRVGER EFPCHRLVLA
Predicted Reactivity:	Cow: 100%, Dog: 100%, Guinea Pig: 100%, Horse: 100%, Human: 100%, Mouse: 100%, Rabbit: 100%, Rat: 100%
Characteristics:	This is a rabbit polyclonal antibody against Kbtbd5. It was validated on Western Blot.
Purification:	Affinity Purified

Target Details

Target:	KBTBD5
Alternative Name:	Kbtbd5 (KBTBD5 Products)
Background:	The function of this protein remains unknown.

Target Details

Alias Symbols: 2310024D23Rik, Kbtbd5

Protein Interaction Partner: Tubb1, Lmod3, Kank2, Klhl41, Slc25a2, Myl12a, Iqgap1, Tuba1b, Nrap, Neb, Gapdh, Acta1,

Protein Size: 621

Molecular Weight: 69 kDa

Gene ID: 72330

NCBI Accession: [NM_028202](#), [NP_082478](#)

UniProt: [Q9D783](#)

Application Details

Application Notes: Optimal working dilutions should be determined experimentally by the investigator.

Comment: Antigen size: 621 AA

Restrictions: For Research Use only

Handling

Format: Liquid

Concentration: Lot specific

Buffer: Liquid. Purified antibody supplied in 1x PBS buffer with 0.09 % (w/v) sodium azide and 2 % sucrose.

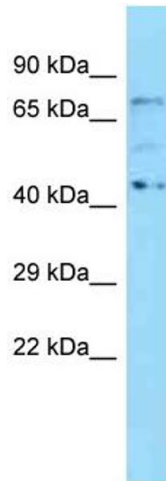
Preservative: Sodium azide

Precaution of Use: This product contains Sodium azide: a POISONOUS AND HAZARDOUS SUBSTANCE which should be handled by trained staff only.

Handling Advice: Avoid repeated freeze-thaw cycles.

Storage: -20 °C

Storage Comment: For short term use, store at 2-8°C up to 1 week. For long term storage, store at -20°C in small aliquots to prevent freeze-thaw cycles.



Western Blotting

Image 1. WB Suggested Anti-Kbtbd5 Antibody Titration:
1.0 ug/ml Positive Control: Mouse Brain