

Datasheet for ABIN2778522
anti-GLIS3 antibody (N-Term)

2 Images

[Go to Product page](#)

Overview

Quantity:	100 µL
Target:	GLIS3
Binding Specificity:	N-Term
Reactivity:	Human, Mouse, Dog, Rat, Guinea Pig, Horse, Rabbit
Host:	Rabbit
Clonality:	Polyclonal
Conjugate:	This GLIS3 antibody is un-conjugated
Application:	Western Blotting (WB), Immunohistochemistry (IHC)

Product Details

Immunogen:	The immunogen is a synthetic peptide directed towards the N terminal region of human GLIS3
Sequence:	PPASQVSTAC NQISPSLQRA MNAANLNIPP SDTRSLISRE SLASTTSLT
Predicted Reactivity:	Dog: 100%, Guinea Pig: 100%, Horse: 100%, Human: 100%, Mouse: 93%, Rabbit: 100%, Rat: 100%
Characteristics:	This is a rabbit polyclonal antibody against GLIS3. It was validated on Western Blot using a cell lysate as a positive control.
Purification:	Protein A purified

Target Details

Target:	GLIS3
---------	-------

Target Details

Alternative Name:	GLIS3 (GLIS3 Products)
Background:	<p>GLIS3 is a member of the GLI-similar zinc finger protein family and has five C2H2-type zinc finger domains. GLIS3 functions as both a repressor and activator of transcription and is specifically involved in the development of pancreatic beta cells, the thyroid, eye, liver and kidney. Mutations in this gene have been associated with neonatal diabetes and congenital hypothyroidism (NDH).</p> <p>Alias Symbols: ZNF515</p> <p>Protein Interaction Partner: SUFU, SOX2,</p> <p>Protein Size: 775</p>
Molecular Weight:	84 kDa
Gene ID:	169792
NCBI Accession:	NM_152629 , NP_689842
UniProt:	Q8NEA6

Application Details

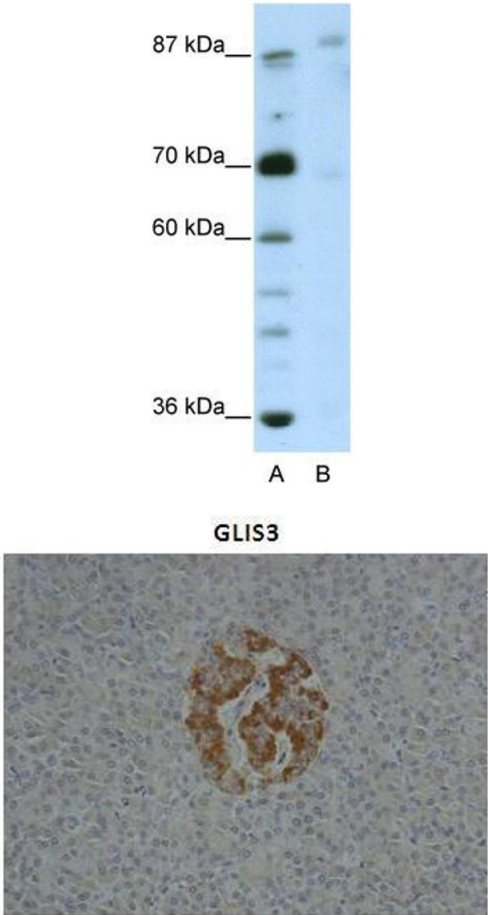
Application Notes:	Optimal working dilutions should be determined experimentally by the investigator.
Comment:	Antigen size: 775 AA
Restrictions:	For Research Use only

Handling

Format:	Liquid
Concentration:	Lot specific
Buffer:	Liquid. Purified antibody supplied in 1x PBS buffer with 0.09 % (w/v) sodium azide and 2 % sucrose.
Preservative:	Sodium azide
Precaution of Use:	This product contains Sodium azide: a POISONOUS AND HAZARDOUS SUBSTANCE which should be handled by trained staff only.
Handling Advice:	Avoid repeated freeze-thaw cycles.
Storage:	-20 °C
Storage Comment:	For short term use, store at 2-8°C up to 1 week. For long term storage, store at -20°C in small

aliquots to prevent freeze-thaw cycles.

Images



Western Blotting

Image 1. WB Suggested Anti-GLIS3 Antibody Titration: 2.5ug/ml ELISA Titer: 1:62500 Positive Control: HepG2 cell lysate

Immunohistochemistry

Image 2. Sample Type : Human Pancreas Primary Antibody Dilution : 1:10 Secondary Antibody : Anti-rabbit HRP Secondary Antibody Dilution : 1:1000 Gene Name : GLIS3 Submitted by : Anonymous

See IHC 1 Data and Customer Feedback for more Information