

Datasheet for ABIN2778545  
**anti-MLX antibody (N-Term)**



[Go to Product page](#)

1 Image

1 Publication

## Overview

Quantity:	100 µL
Target:	MLX
Binding Specificity:	N-Term
Reactivity:	Human, Mouse, Rat, Cow, Dog, Pig, Goat, Horse, Rabbit
Host:	Rabbit
Clonality:	Polyclonal
Conjugate:	This MLX antibody is un-conjugated
Application:	Western Blotting (WB)

## Product Details

Immunogen:	The immunogen is a synthetic peptide directed towards the N terminal region of human MLX
Sequence:	MTEPGASPED PWVKASPVGA HAGEGRAGRA RARRGAGRRG ASLLSPKSPT
Predicted Reactivity:	Cow: 100%, Dog: 93%, Goat: 100%, Horse: 93%, Human: 100%, Mouse: 100%, Pig: 100%, Rabbit: 100%, Rat: 100%
Characteristics:	This is a rabbit polyclonal antibody against MLX. It was validated on Western Blot using a cell lysate as a positive control.
Purification:	Protein A purified

## Target Details

Target:	MLX
---------	-----

## Target Details

Alternative Name:	MLX ( <a href="#">MLX Products</a> )
Background:	<p>MLX belongs to the family of basic helix-loop-helix leucine zipper (bHLH-Zip) transcription factors. These factors form heterodimers with Mad proteins and play a role in proliferation, determination and differentiation. MLX may act to diversify Mad family function by its restricted association with a subset of the Mad family of transcriptional repressors, namely, Mad1 and Mad4. The product of this gene belongs to the family of basic helix-loop-helix leucine zipper (bHLH-Zip) transcription factors. These factors form heterodimers with Mad proteins and play a role in proliferation, determination and differentiation. This gene product may act to diversify Mad family function by its restricted association with a subset of the Mad family of transcriptional repressors, namely, Mad1 and Mad4. Alternatively spliced transcript variants encoding different isoforms have been identified for this gene.</p> <p>Alias Symbols: MAD7, MXD7, TCFL4, bHLHd13</p> <p>Protein Interaction Partner: ZBTB32, GABARAPL2, RBM39, AES, UBC, SAP30BP, ID3, APP, SUMO1, MLXIPL, MLXIP, MXD4, MNT, MAD1L1, MLX, MXD1,</p> <p>Protein Size: 298</p>
Molecular Weight:	33 kDa
Gene ID:	6945
NCBI Accession:	<a href="#">NM_170607</a> , <a href="#">NP_733752</a>
UniProt:	<a href="#">Q9UH92</a>

## Application Details

Application Notes:	Optimal working dilutions should be determined experimentally by the investigator.
Comment:	Antigen size: 298 AA
Restrictions:	For Research Use only

## Handling

Format:	Liquid
Concentration:	Lot specific
Buffer:	Liquid. Purified antibody supplied in 1x PBS buffer with 0.09 % (w/v) sodium azide and 2 % sucrose.
Preservative:	Sodium azide

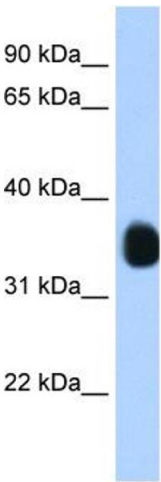
## Handling

Precaution of Use:	This product contains Sodium azide: a POISONOUS AND HAZARDOUS SUBSTANCE which should be handled by trained staff only.
Handling Advice:	Avoid repeated freeze-thaw cycles.
Storage:	-20 °C
Storage Comment:	For short term use, store at 2-8°C up to 1 week. For long term storage, store at -20°C in small aliquots to prevent freeze-thaw cycles.

## Publications

Product cited in:	Stoltzman, Peterson, Breen, Muoio, Billin, Ayer: "Glucose sensing by MondoA:MLX complexes: a role for hexokinases and direct regulation of thioredoxin-interacting protein expression." in: <b>Proceedings of the National Academy of Sciences of the United States of America</b> , Vol. 105, Issue 19, pp. 6912-7, (2008) ( <a href="#">PubMed</a> ).
-------------------	---

## Images



**Western Blotting**

**Image 1.** WB Suggested Anti-MLX Antibody Titration: 1.25ug/ml ELISA Titer: 1:1562500 Positive Control: Transfected 293T