

Datasheet for ABIN2778556  
**anti-KLF17 antibody (N-Term)**[Go to Product page](#)

## 2 Images

## Overview

|                      |                                      |
|----------------------|--------------------------------------|
| Quantity:            | 100 µL                               |
| Target:              | KLF17                                |
| Binding Specificity: | N-Term                               |
| Reactivity:          | Human, Rat                           |
| Host:                | Rabbit                               |
| Clonality:           | Polyclonal                           |
| Conjugate:           | This KLF17 antibody is un-conjugated |
| Application:         | Western Blotting (WB)                |

## Product Details

|                       |  |
|-----------------------|--|
| Immunogen:            | The immunogen is a synthetic peptide directed towards the N terminal region of human KLF17 |
| Sequence:             | YGRPQAEMEQ EAGELSRWQA AHQAAQDNEN SAPILNMSSS SGSSGVHTSW                                     |
| Predicted Reactivity: | Human: 100%, Rat: 82%  |
| Characteristics:      | This is a rabbit polyclonal antibody against KLF17. It was validated on Western Blot.      |
| Purification:         | Affinity Purified  |

## Target Details

|                   |  |
|-------------------|--|
| Target:           | KLF17  |
| Alternative Name: | KLF17 ( <a href="#">KLF17 Products</a> )   |
| Background:       | KLF17 binds G/C-rich sites via its zinc fingers and activates transcription from CACCC-box |

## Target Details

elements. It may be a germ cell-specific transcription factor that plays important roles in spermatid differentiation and oocyte development.

Alias Symbols: FLJ40160, ZNF393, Zfp393, RP4-675G8.1

Protein Interaction Partner: CIB3,

Protein Size: 389

Molecular Weight: 42 kDa

Gene ID: 128209

NCBI Accession: [NM\\_173484](#), [NP\\_775755](#)

UniProt: [Q5JT82](#)

## Application Details

Application Notes: Optimal working dilutions should be determined experimentally by the investigator.

Comment: Antigen size: 389 AA

Restrictions: For Research Use only

## Handling

Format: Liquid

Concentration: Lot specific

Buffer: Liquid. Purified antibody supplied in 1x PBS buffer with 0.09 % (w/v) sodium azide and 2 % sucrose.

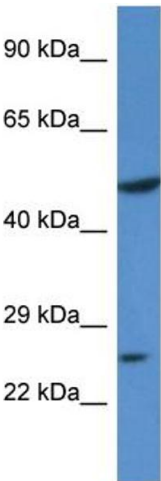
Preservative: Sodium azide

Precaution of Use: This product contains Sodium azide: a POISONOUS AND HAZARDOUS SUBSTANCE which should be handled by trained staff only.

Handling Advice: Avoid repeated freeze-thaw cycles.

Storage: -20 °C

Storage Comment: For short term use, store at 2-8°C up to 1 week. For long term storage, store at -20°C in small aliquots to prevent freeze-thaw cycles.

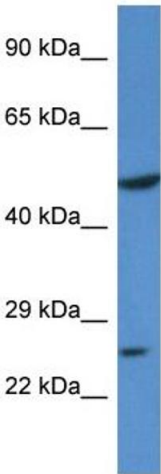


Rabbit Anti-KLF17 Antibody  
Catalog Number: ARP39987  
Lot Number: QC32460  
Lane: 293T Cell Lysate

Antibody Titration: 1.0µg/ml  
Gel Concentration: 12%

Western Blotting

**Image 1.** WB Suggested Anti-KLF17 Antibody Titration: 0.2-1 ug/ml ELISA Titer: 1:62500 Positive Control: HepG2 cell lysate



Western Blotting

**Image 2.**