



[Go to Product page](#)

Datasheet for ABIN2778577

anti-RNF166 antibody (Middle Region)

1 Image

1 Publication

Overview

Quantity:	100 µL
Target:	RNF166
Binding Specificity:	Middle Region
Reactivity:	Human, Mouse, Rat, Horse, Cow, Zebrafish (Danio rerio), Guinea Pig, Dog, Rabbit
Host:	Rabbit
Clonality:	Polyclonal
Conjugate:	This RNF166 antibody is un-conjugated
Application:	Western Blotting (WB)

Product Details

Immunogen:	The immunogen is a synthetic peptide directed towards the middle region of human RNF166
Sequence:	RVVCPICSAM PWGDPSYKSA NFLQHLLHRH KFSYDTFVDY SIDEEAAFQA
Predicted Reactivity:	Cow: 100%, Dog: 100%, Guinea Pig: 100%, Horse: 100%, Human: 100%, Mouse: 100%, Rabbit: 92%, Rat: 100%, Zebrafish: 100%
Characteristics:	This is a rabbit polyclonal antibody against RNF166. It was validated on Western Blot using a cell lysate as a positive control.
Purification:	Affinity Purified

Target Details

Target:	RNF166
---------	--------

Target Details

Alternative Name:	RNF166 (RNF166 Products)
Background:	The exact function of the protein encoded by this gene is not known. Alias Symbols: MGC14381, MGC2647, ABP, DAO, KAO, AOC1, DAO1, RNF166 Protein Interaction Partner: DAO, DNM2, FGD1, Protein Size: 237
Molecular Weight:	26 kDa
Gene ID:	26
NCBI Accession:	NM_178841 , NP_849163
UniProt:	Q96A37

Application Details

Application Notes:	Optimal working dilutions should be determined experimentally by the investigator.
Comment:	Antigen size: 237 AA
Restrictions:	For Research Use only

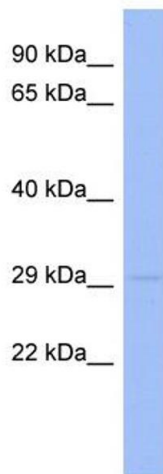
Handling

Format:	Liquid
Concentration:	Lot specific
Buffer:	Liquid. Purified antibody supplied in 1x PBS buffer with 0.09 % (w/v) sodium azide and 2 % sucrose.
Preservative:	Sodium azide
Precaution of Use:	This product contains Sodium azide: a POISONOUS AND HAZARDOUS SUBSTANCE which should be handled by trained staff only.
Handling Advice:	Avoid repeated freeze-thaw cycles.
Storage:	-20 °C
Storage Comment:	For short term use, store at 2-8°C up to 1 week. For long term storage, store at -20°C in small aliquots to prevent freeze-thaw cycles.

Publications

Product cited in: Gerhard, Wagner, Feingold, Shenmen, Grouse, Schuler, Klein, Old, Rasooly, Good, Guyer, Peck,

Derge, Lipman, Collins, Jang, Sherry, Feolo, Misquitta, Lee, Rotmistrovsky, Greenhut, Schaefer, Buetow et al.: "The status, quality, and expansion of the NIH full-length cDNA project: the Mammalian Gene Collection (MGC). ..." in: **Genome research**, Vol. 14, Issue 10B, pp. 2121-7, (2004) ([PubMed](#)).



Western Blotting

Image 1. WB Suggested Anti-RNF166 Antibody Titration: 0.2-1 ug/ml ELISA Titer: 1:312500 Positive Control: THP-1 cell lysate