

Datasheet for ABIN2778582
anti-HKR1 antibody (C-Term)[Go to Product page](#)

3 Images

1 Publication

Overview

Quantity:	100 µL
Target:	HKR1
Binding Specificity:	C-Term
Reactivity:	Human, Mouse, Rat, Cow, Horse, Pig, Dog, Rabbit, Guinea Pig
Host:	Rabbit
Clonality:	Polyclonal
Conjugate:	This HKR1 antibody is un-conjugated
Application:	Western Blotting (WB), Immunohistochemistry (IHC)

Product Details

Immunogen:	The immunogen is a synthetic peptide directed towards the C terminal region of human HKR1
Sequence:	RECGQGFSRQ SHLIRHQRTS SGEKPYICRK CGRGFSRKS N LIRHQRTS G
Predicted Reactivity:	Cow: 100%, Dog: 100%, Guinea Pig: 92%, Horse: 100%, Human: 100%, Mouse: 100%, Pig: 100%, Rabbit: 86%, Rat: 100%
Characteristics:	This is a rabbit polyclonal antibody against HKR1. It was validated on Western Blot and immunohistochemistry.
Purification:	Affinity Purified

Target Details

Target:	HKR1
---------	------

Target Details

Alternative Name:	HKR1 (HKR1 Products)
Background:	<p>HKR1 is one of the GLI-Kruppel family of human genes. Members of this family have similar H-C links, i.e., a conserved stretch of 9 amino acids connecting the C-terminal histidine of one finger to the N-terminal cysteine of the next. On the basis of amino acid sequence and intron-exon organization, the genes could be placed into one of two subgroups: the GLI subgroup (with the consensus finger amino acid sequence [Y/F]XCX3GCX3[F/Y]X5LX2HX3-4H[T/S]GEKP) or the Kr subgroup (with the consensus finger amino acid sequence [Y/F]XCX2CX3FX5LX2HXRHTGEKP).</p> <p>Alias Symbols: ZNF875</p> <p>Protein Interaction Partner: CDK11A,</p> <p>Protein Size: 659</p>
Molecular Weight:	75 kDa
Gene ID:	284459
NCBI Accession:	NM_181786 , NP_861451
UniProt:	Q6PJD0

Application Details

Application Notes:	Optimal working dilutions should be determined experimentally by the investigator.
Comment:	Antigen size: 659 AA
Restrictions:	For Research Use only

Handling

Format:	Liquid
Concentration:	Lot specific
Buffer:	Liquid. Purified antibody supplied in 1x PBS buffer with 0.09 % (w/v) sodium azide and 2 % sucrose.
Preservative:	Sodium azide
Precaution of Use:	This product contains Sodium azide: a POISONOUS AND HAZARDOUS SUBSTANCE which should be handled by trained staff only.
Handling Advice:	Avoid repeated freeze-thaw cycles.

Handling

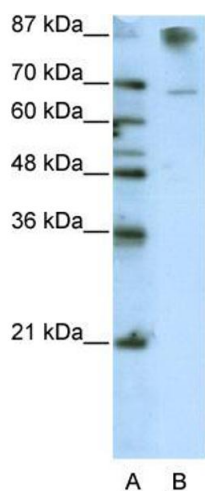
Storage: -20 °C

Storage Comment: For short term use, store at 2-8°C up to 1 week. For long term storage, store at -20°C in small aliquots to prevent freeze-thaw cycles.

Publications

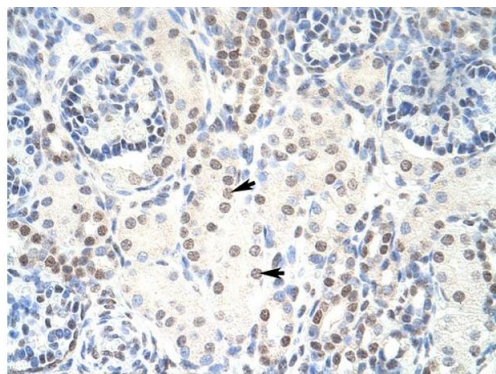
Product cited in: van Dijk, Schilders, Pruijn: "Human cell growth requires a functional cytoplasmic exosome, which is involved in various mRNA decay pathways." in: **RNA (New York, N.Y.)**, Vol. 13, Issue 7, pp. 1027-35, (2007) ([PubMed](#)).

Images



Western Blotting

Image 1. WB Suggested Anti-HKR1 Antibody Titration: 0.125ug/ml ELISA Titer: 1:12500 Positive Control: HepG2 cell lysate



Immunohistochemistry

Image 2. Human kidney

Rabbit Anti-HKR1 Antibody
Catalog Number: ARP40041
Lot Number: QC9251
Paraffin Embedded Tissue: Human Kidney
Cells with Positive label: Epithelial cells of renal tubule (Indicated with Arrows)
Antibody Concentration: 4.0-8.0 µg/ml
Magnification: 400X



Rabbit Anti-HKR1 Antibody
Catalog Number: ARP40041
Lot Number: QC9251
Paraffin Embedded Tissue: Human Heart
Cells with Positive label: Myocardial cells (Indicated with Arrows)
Antibody Concentration: 4.0-8.0 µg/ml
Magnification: 400X

Immunohistochemistry

Image 3. Human Heart