



[Go to Product page](#)

Datasheet for ABIN2778585
anti-DMRT2 antibody (N-Term)

2 Images

Overview

Quantity:	100 µL
Target:	DMRT2
Binding Specificity:	N-Term
Reactivity:	Human, Rabbit
Host:	Rabbit
Clonality:	Polyclonal
Conjugate:	This DMRT2 antibody is un-conjugated
Application:	Western Blotting (WB), Immunohistochemistry (IHC)

Product Details

Immunogen:	The immunogen is a synthetic peptide directed towards the N terminal region of human DMRT2
Sequence:	DPQAGSAAGD WEIDVESLEL EEDVCGAPRS TPPGPSPPPA DGDCEDEDD
Predicted Reactivity:	Human: 100%, Rabbit: 86%
Characteristics:	This is a rabbit polyclonal antibody against DMRT2. It was validated on Western Blot and immunohistochemistry.
Purification:	Protein A purified

Target Details

Target:	DMRT2
---------	-------

Target Details

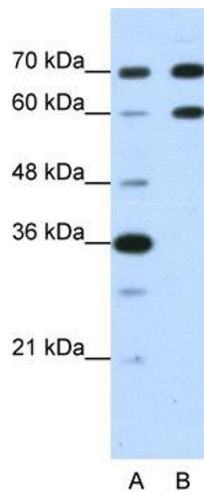
Alternative Name:	DMRT2 (DMRT2 Products)
Background:	Gonadal dysgenesis in 9p-deleted individuals might be due to combined hemizyosity of DMRT1 and DMRT2. Protein Interaction Partner: UBC, Protein Size: 561
Molecular Weight:	62 kDa
Gene ID:	10655
NCBI Accession:	NM_181872 , NP_870987
UniProt:	Q9NQR6

Application Details

Application Notes:	Optimal working dilutions should be determined experimentally by the investigator.
Comment:	Antigen size: 561 AA
Restrictions:	For Research Use only

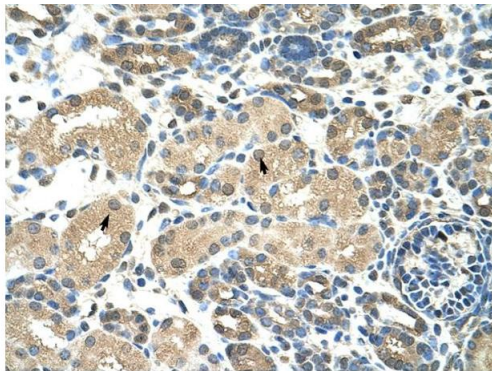
Handling

Format:	Liquid
Concentration:	Lot specific
Buffer:	Liquid. Purified antibody supplied in 1x PBS buffer with 0.09 % (w/v) sodium azide and 2 % sucrose.
Preservative:	Sodium azide
Precaution of Use:	This product contains Sodium azide: a POISONOUS AND HAZARDOUS SUBSTANCE which should be handled by trained staff only.
Handling Advice:	Avoid repeated freeze-thaw cycles.
Storage:	-20 °C
Storage Comment:	For short term use, store at 2-8°C up to 1 week. For long term storage, store at -20°C in small aliquots to prevent freeze-thaw cycles.



Western Blotting

Image 1. WB Suggested Anti-DMRT2 Antibody Titration:
1.25ug/ml Positive Control: HepG2 cell lysate



Rabbit Anti-DMRT2 Antibody
Catalog Number: ARP40046
Lot Number: QC10470
Paraffin Embedded Tissue: Human Kidney
Cells with Positive label: Epithelial cells of renal tubule (Indicated with Arrows)
Antibody Concentration: 4.0-8.0 µg/ml
Magnification: 400X

Immunohistochemistry

Image 2. Human kidney