

Datasheet for ABIN2778600
anti-ZNF568 antibody (N-Term)[Go to Product page](#)

1 Image

1 Publication

Overview

Quantity:	100 µL
Target:	ZNF568
Binding Specificity:	N-Term
Reactivity:	Human, Cow, Horse, Pig, Dog, Guinea Pig, Mouse, Rabbit, Rat, Sheep
Host:	Rabbit
Clonality:	Polyclonal
Conjugate:	This ZNF568 antibody is un-conjugated
Application:	Western Blotting (WB)

Product Details

Immunogen:	The immunogen is a synthetic peptide directed towards the N terminal region of human ZNF568
Sequence:	NLYRDVMLEN YSNLVTVCQ VTKPDVIFKL EQEEEPWVME EEMFGRHCPE
Predicted Reactivity:	Cow: 100%, Dog: 93%, Guinea Pig: 86%, Horse: 93%, Human: 100%, Mouse: 86%, Pig: 93%, Rabbit: 93%, Rat: 100%, Sheep: 77%
Characteristics:	This is a rabbit polyclonal antibody against ZNF568. It was validated on Western Blot using a cell lysate as a positive control.
Purification:	Affinity Purified

Target Details

Target:	ZNF568
---------	--------

Target Details

Alternative Name:	ZNF568 (ZNF568 Products)
Background:	The function of the Anti-ZNF568 gene has not yet been determined. Alias Symbols: DKFZp686B0797, FLJ35804 Protein Interaction Partner: SUMO1, ILK, CBX5, UBC, Protein Size: 644
Molecular Weight:	74 kDa
Gene ID:	374900
NCBI Accession:	NM_198539 , NP_940941
UniProt:	Q3ZCX4

Application Details

Application Notes:	Optimal working dilutions should be determined experimentally by the investigator.
Comment:	Antigen size: 644 AA
Restrictions:	For Research Use only

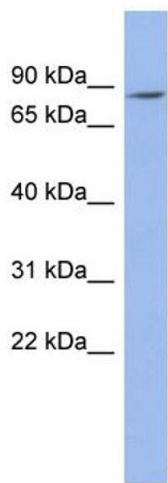
Handling

Format:	Liquid
Concentration:	Lot specific
Buffer:	Liquid. Purified antibody supplied in 1x PBS buffer with 0.09 % (w/v) sodium azide and 2 % sucrose.
Preservative:	Sodium azide
Precaution of Use:	This product contains Sodium azide: a POISONOUS AND HAZARDOUS SUBSTANCE which should be handled by trained staff only.
Handling Advice:	Avoid repeated freeze-thaw cycles.
Storage:	-20 °C
Storage Comment:	For short term use, store at 2-8°C up to 1 week. For long term storage, store at -20°C in small aliquots to prevent freeze-thaw cycles.

Publications

Product cited in:	van Dijk, Schilders, Pruijn: "Human cell growth requires a functional cytoplasmic exosome,
-------------------	--

which is involved in various mRNA decay pathways." in: **RNA (New York, N.Y.)**, Vol. 13, Issue 7, pp. 1027-35, (2007) ([PubMed](#)).



Western Blotting

Image 1. WB Suggested Anti-ZNF568 Antibody Titration: 0.2-1 ug/ml ELISA Titer: 1:62500 Positive Control: OVCAR-3 cell lysate