

Datasheet for ABIN2778611
anti-Kdm6b antibody (Middle Region)[Go to Product page](#)

2 Images

Overview

Quantity:	100 µL
Target:	Kdm6b
Binding Specificity:	Middle Region
Reactivity:	Human, Mouse, Rat, Dog, Rabbit, Cow, Horse, Pig
Host:	Rabbit
Clonality:	Polyclonal
Conjugate:	This Kdm6b antibody is un-conjugated
Application:	Western Blotting (WB)

Product Details

Immunogen:	The immunogen is a synthetic peptide directed towards the middle region of human JMJD3
Sequence:	AGLQGVVVLE QYRTEELAQA YDAFTLVRRAR RARGQRRRAL GQAAGTGFGS
Predicted Reactivity:	Cow: 100%, Dog: 100%, Horse: 100%, Human: 100%, Mouse: 100%, Pig: 100%, Rabbit: 100%, Rat: 100%
Characteristics:	This is a rabbit polyclonal antibody against JMJD3. It was validated on Western Blot using a cell lysate as a positive control.
Purification:	Protein A purified

Target Details

Target:	Kdm6b
---------	-------

Target Details

Alternative Name:	JMJD3 (Kdm6b Products)
Background:	<p>JMJD3 is a histone demethylase that specifically demethylates 'Lys-27' of histone H3, thereby playing a central role in histone code. It plays a central role in regulation of posterior development, by regulating HOX gene expression. It is involved in inflammatory response by participating in macrophage differentiation in case of inflammation by regulating gene expression and macrophage differentiation.</p> <p>Alias Symbols: KIAA0346, JMJD3</p> <p>Protein Interaction Partner: WDR5, ASH2L, RBBP5, UBC, TK1, CSNK2B, HIST1H3A, WAS, SMAD3, SMAD2, SMAD4, SMAD1,</p> <p>Protein Size: 1643</p>
Molecular Weight:	177 kDa
Gene ID:	23135
NCBI Accession:	NM_001080424
UniProt:	O15054
Pathways:	Warburg Effect

Application Details

Application Notes:	Optimal working dilutions should be determined experimentally by the investigator.
Comment:	Antigen size: 644 AA
Restrictions:	For Research Use only

Handling

Format:	Liquid
Concentration:	Lot specific
Buffer:	Liquid. Purified antibody supplied in 1x PBS buffer with 0.09 % (w/v) sodium azide and 2 % sucrose.
Preservative:	Sodium azide
Precaution of Use:	This product contains Sodium azide: a POISONOUS AND HAZARDOUS SUBSTANCE which should be handled by trained staff only.
Handling Advice:	Avoid repeated freeze-thaw cycles.

Handling

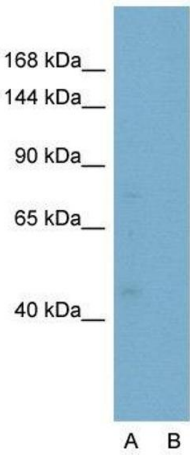
Storage:	-20 °C
Storage Comment:	For short term use, store at 2-8°C up to 1 week. For long term storage, store at -20°C in small aliquots to prevent freeze-thaw cycles.

Images



Western Blotting

Image 1. WB Suggested Anti-JMJD3 Antibody Titration:
1.25ug/ml Positive Control: HepG2 cell lysate



Anti-JMJD3 Western Blot & Peptide Block Validation

Lot Number: QC10459
Lysate: HepG2 Cell

Lane A: Primary Antibody
Lane B: Primary Antibody + Blocking Peptide

Primary Antibody Concentration: 2.5µg/ml
Peptide Concentration: 2.0µg/ml
Lysate Quantity: 25µg/lane
Gel Concentration: 6-18%

Western Blotting

Image 2. Host: Rabbit Target Name: JMJD3 Sample Type: HepG2
Lane A: Primary Antibody Lane B: Primary Antibody + Blocking Peptide
Primary Antibody Concentration: 2.5ug/mL
Peptide Concentration: 2.0ug/mL Lysate Quantity: 25ug/lane
Gel Concentration: 6%-18%