



[Go to Product page](#)

Datasheet for ABIN2778617
anti-ZFP57 antibody (N-Term)

2 Images

Overview

Quantity:	100 µL
Target:	ZFP57
Binding Specificity:	N-Term
Reactivity:	Human
Host:	Rabbit
Clonality:	Polyclonal
Conjugate:	This ZFP57 antibody is un-conjugated
Application:	Western Blotting (WB), Immunohistochemistry (IHC)

Product Details

Immunogen:	The immunogen is a synthetic peptide directed towards the N terminal region of human ZFP57
Sequence:	MFEQLKPIEP RDCWREARVK KKPVTTFEDVA VNFTQEEWDC LDASQRVLYQ
Predicted Reactivity:	Human: 100%
Characteristics:	This is a rabbit polyclonal antibody against ZFP57. It was validated on Western Blot and immunohistochemistry.
Purification:	Protein A purified

Target Details

Target:	ZFP57
Alternative Name:	ZFP57 (ZFP57 Products)

Target Details

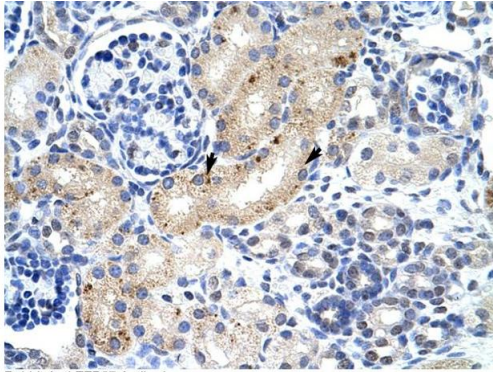
Background:	ZFP57 is a protein similar to zinc finger protein 57. It is derived from an annotated genomic sequence (NT_007592) using gene prediction method. Protein Interaction Partner: TRIM28, DNMT3B, DNMT3A, DNMT1, Protein Size: 516
Molecular Weight:	59 kDa
Gene ID:	346171
NCBI Accession:	XM_940744 , XP_945837

Application Details

Application Notes:	Optimal working dilutions should be determined experimentally by the investigator.
Comment:	Antigen size: 516 AA
Restrictions:	For Research Use only

Handling

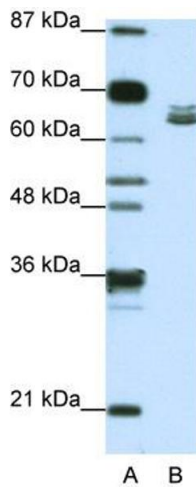
Format:	Liquid
Concentration:	Lot specific
Buffer:	Liquid. Purified antibody supplied in 1x PBS buffer with 0.09 % (w/v) sodium azide and 2 % sucrose.
Preservative:	Sodium azide
Precaution of Use:	This product contains Sodium azide: a POISONOUS AND HAZARDOUS SUBSTANCE which should be handled by trained staff only.
Handling Advice:	Avoid repeated freeze-thaw cycles.
Storage:	-20 °C
Storage Comment:	For short term use, store at 2-8°C up to 1 week. For long term storage, store at -20°C in small aliquots to prevent freeze-thaw cycles.



Rabbit Anti-ZFP57 Antibody
Catalog Number: ARP40121
Lot Number: QC9646
Paraffin Embedded Tissue: Human Kidney
Cells with Positive label: Epithelial cells of renal tubule (Indicated with Arrows)
Antibody Concentration: 4.0-8.0 µg/ml
Magnification: 400X

Immunohistochemistry

Image 1. Human kidney



Western Blotting

Image 2. WB Suggested Anti-ZFP57 Antibody Titration:
1.25ug/ml ELISA Titer: 1:312500 Positive Control: Jurkat cell lysate