



[Go to Product page](#)

Datasheet for ABIN2778621  
**anti-SIDT2 antibody (N-Term)**

7 Images

Overview

Quantity:	100 µL
Target:	SIDT2
Binding Specificity:	N-Term
Reactivity:	Human, Mouse, Rat, Cow, Guinea Pig, Dog, Horse, Rabbit
Host:	Rabbit
Clonality:	Polyclonal
Conjugate:	This SIDT2 antibody is un-conjugated
Application:	Western Blotting (WB)

Product Details

Immunogen:	The immunogen is a synthetic peptide directed towards the N terminal region of human SIDT2
Sequence:	LNKQKGAPLL FVVRQKEAVV SFQVPLILRG MFQRKYLYQK VERTLCQPPT
Predicted Reactivity:	Cow: 100%, Dog: 93%, Guinea Pig: 100%, Horse: 93%, Human: 100%, Mouse: 93%, Rabbit: 93%, Rat: 100%
Characteristics:	This is a rabbit polyclonal antibody against SIDT2. It was validated on Western Blot using a cell lysate as a positive control.
Purification:	Affinity Purified

Target Details

Target:	SIDT2
---------	-------

## Target Details

---

Alternative Name:	SIDT2 ( <a href="#">SIDT2 Products</a> )
Background:	SIDT2 belongs to the SID1 family. It is a multi-pass membrane protein. The exact function of SIDT2 remains unknown. Alias Symbols: CGI-40, DKFZp686L17253, FLJ90656 Protein Size: 832
Molecular Weight:	94 kDa
Gene ID:	51092
NCBI Accession:	<a href="#">NM_001040455</a> , <a href="#">NP_001035545</a>
UniProt:	<a href="#">Q8NBJ9</a>

## Application Details

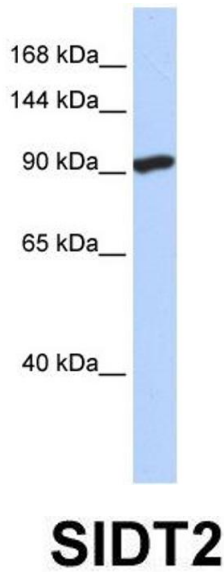
---

Application Notes:	Optimal working dilutions should be determined experimentally by the investigator.
Comment:	Antigen size: 832 AA
Restrictions:	For Research Use only

## Handling

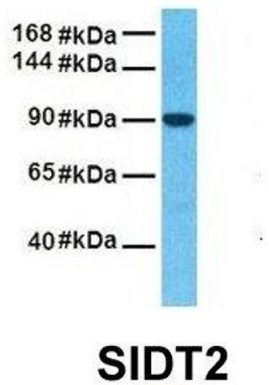
---

Format:	Liquid
Concentration:	Lot specific
Buffer:	Liquid. Purified antibody supplied in 1x PBS buffer with 0.09 % (w/v) sodium azide and 2 % sucrose.
Preservative:	Sodium azide
Precaution of Use:	This product contains Sodium azide: a POISONOUS AND HAZARDOUS SUBSTANCE which should be handled by trained staff only.
Handling Advice:	Avoid repeated freeze-thaw cycles.
Storage:	-20 °C
Storage Comment:	For short term use, store at 2-8°C up to 1 week. For long term storage, store at -20°C in small aliquots to prevent freeze-thaw cycles.



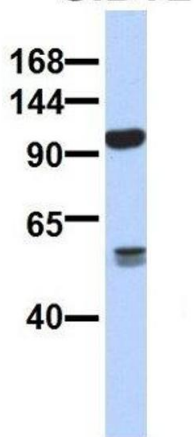
#### Western Blotting

**Image 1.** WB Suggested Anti-SIDT2 Antibody Titration: 0.2-1 ug/ml ELISA Titer: 1:1562500 Positive Control: HeLa cell lysate



#### Western Blotting

**Image 2.** Host: Rabbit Target Name: SIDT2 Sample Tissue: Human Fetal Liver Antibody Dilution: 1.0ug/ml



#### Western Blotting

**Image 3.** Host: Rabbit Target Name: SERPINA3 Sample Type: Human Adult Placenta Antibody Dilution: 1.0ug/ml

Please check the [product details page](#) for more images. Overall 7 images are available for ABIN2778621.