

Datasheet for ABIN2778624  
**anti-LCORL antibody (Middle Region)**[Go to Product page](#)

## 1 Image

## Overview

Quantity:	100 µL
Target:	LCORL
Binding Specificity:	Middle Region
Reactivity:	Human, Mouse, Rat, Cow, Dog, Guinea Pig, Horse, Rabbit
Host:	Rabbit
Clonality:	Polyclonal
Conjugate:	This LCORL antibody is un-conjugated
Application:	Western Blotting (WB)

## Product Details

Immunogen:	The immunogen is a synthetic peptide corresponding to a region of Mouse
Sequence:	LTLQKMVTQF KEKNESLQYE TSNPPVQLKI PQLRVNSVSK SQADGSGLLD
Predicted Reactivity:	Cow: 100%, Dog: 100%, Guinea Pig: 100%, Horse: 100%, Human: 100%, Mouse: 100%, Rabbit: 100%, Rat: 100%
Characteristics:	This is a rabbit polyclonal antibody against Lcorl. It was validated on Western Blot.
Purification:	Affinity Purified

## Target Details

Target:	LCORL
Alternative Name:	Lcorl ( <a href="#">LCORL Products</a> )

## Target Details

Background: Lcorl may act as transcription activator that binds DNA elements with the sequence 5'-CCCTATCGATCGATCTCTACCT-3'. Lcorl may play a role in spermatogenesis.

Alias Symbols: Mlr1

Protein Size: 517

Molecular Weight: 57 kDa

Gene ID: 209707

NCBI Accession: [NM\\_172153](#), [NP\\_742165](#)

UniProt: [Q3U285](#)

## Application Details

Application Notes: Optimal working dilutions should be determined experimentally by the investigator.

Comment: Antigen size: 517 AA

Restrictions: For Research Use only

## Handling

Format: Liquid

Concentration: Lot specific

Buffer: Liquid. Purified antibody supplied in 1x PBS buffer with 0.09 % (w/v) sodium azide and 2 % sucrose.

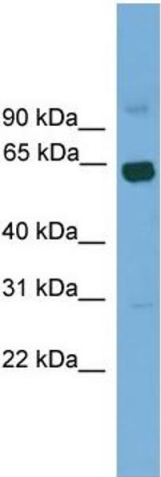
Preservative: Sodium azide

Precaution of Use: This product contains Sodium azide: a POISONOUS AND HAZARDOUS SUBSTANCE which should be handled by trained staff only.

Handling Advice: Avoid repeated freeze-thaw cycles.

Storage: -20 °C

Storage Comment: For short term use, store at 2-8°C up to 1 week. For long term storage, store at -20°C in small aliquots to prevent freeze-thaw cycles.



Western Blotting

**Image 1.** WB Suggested Anti-Lcorl Antibody Titration: 0.2-1 ug/ml Positive Control: Mouse Kidney