

Datasheet for ABIN2778634
anti-INSIG1 antibody (Middle Region)[Go to Product page](#)

3 Images

Overview

Quantity:	100 µL
Target:	INSIG1
Binding Specificity:	Middle Region
Reactivity:	Human, Mouse, Rat, Horse, Rabbit, Cow, Goat, Guinea Pig, Sheep, Dog, Zebrafish (Danio rerio)
Host:	Rabbit
Clonality:	Polyclonal
Conjugate:	This INSIG1 antibody is un-conjugated
Application:	Western Blotting (WB), Immunohistochemistry (IHC)

Product Details

Immunogen:	The immunogen is a synthetic peptide directed towards the middle region of human INSIG1
Sequence:	ITIAFLATLI TQFLVYNGVY QYTSPDFLYI RSWLPCIFFS GGVTVGNIGR
Predicted Reactivity:	Cow: 100%, Dog: 100%, Goat: 100%, Guinea Pig: 100%, Horse: 100%, Human: 100%, Mouse: 100%, Rabbit: 100%, Rat: 100%, Sheep: 100%, Zebrafish: 93%
Characteristics:	This is a rabbit polyclonal antibody against INSIG1. It was validated on Western Blot using a cell lysate as a positive control.
Purification:	Affinity Purified

Target Details

Target:	INSIG1
---------	--------

Target Details

Alternative Name:	INSIG1 (INSIG1 Products)
Background:	<p>Oxysterols regulate cholesterol homeostasis through the liver X receptor (LXR)- and sterol regulatory element-binding protein (SREBP)-mediated signaling pathways. This gene is an insulin-induced gene. INSIG1 is an endoplasmic reticulum (ER) membrane prote</p> <p>Alias Symbols: CL-6, MGC1405, CL6</p> <p>Protein Interaction Partner: UBC, HMGCR, FAF2, SCAP, ERLIN2, ERLIN1, VCP, AMFR, PGRMC1, POR, SREBF1, ELAVL1, RNF139, INSIG2, PSMC3, PSMA7, INSIG1, VAPA, VAPB, SREBF2,</p> <p>Protein Size: 330</p>
Molecular Weight:	36 kDa
Gene ID:	3638
NCBI Accession:	NM_198336 , NP_938150
UniProt:	A4D2M9
Pathways:	ER-Nucleus Signaling

Application Details

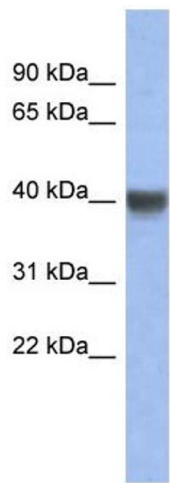
Application Notes:	Optimal working dilutions should be determined experimentally by the investigator.
Comment:	Antigen size: 330 AA
Restrictions:	For Research Use only

Handling

Format:	Liquid
Concentration:	Lot specific
Buffer:	Liquid. Purified antibody supplied in 1x PBS buffer with 0.09 % (w/v) sodium azide and 2 % sucrose.
Preservative:	Sodium azide
Precaution of Use:	This product contains Sodium azide: a POISONOUS AND HAZARDOUS SUBSTANCE which should be handled by trained staff only.
Handling Advice:	Avoid repeated freeze-thaw cycles.
Storage:	-20 °C
Storage Comment:	For short term use, store at 2-8°C up to 1 week. For long term storage, store at -20°C in small

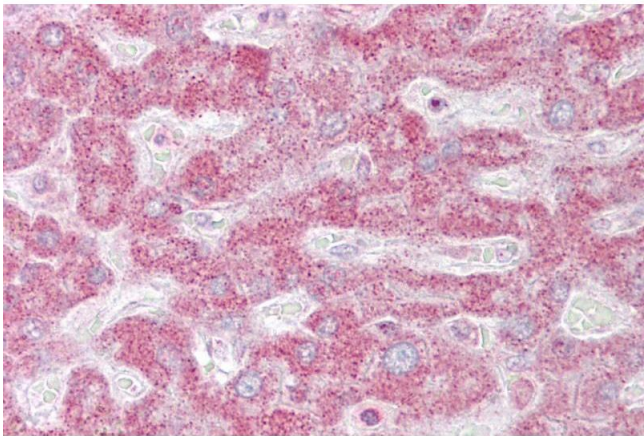
aliquots to prevent freeze-thaw cycles.

Images



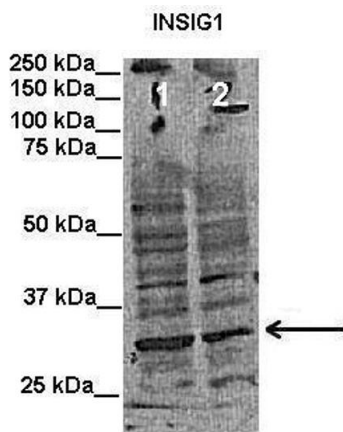
Western Blotting

Image 1. WB Suggested Anti-INSIG1 Antibody Titration: 0.2-1 ug/ml ELISA Titer: 1:312500 Positive Control: Human Spleen



Immunohistochemistry

Image 2. Immunohistochemistry with Liver tissue at an antibody concentration of 10µg/ml using anti-INSIG1 antibody (ARP40159_P050)



Western Blotting

Image 3. Lanes: Lane1: 50 ug human putamen lysate Lane2: 50 ug rat cortex lysate Primary Antibody Dilution: 1:1000 Secondary Antibody: Mouse anti-rabbit HRP Secondary Antibody Dilution: 1:15000 Gene Name: INSIG1 Submitted by: Anonymous

See Immunoblot 2 Data and Customer Feedback for more information