

Datasheet for ABIN2778638  
**anti-INSIG1 antibody (Middle Region)**[Go to Product page](#)

## 2 Images

## Overview

Quantity:	100 µL
Target:	INSIG1
Binding Specificity:	Middle Region
Reactivity:	Human, Mouse, Rat, Horse, Rabbit, Cow, Goat, Guinea Pig, Sheep, Dog, Pig, Zebrafish (Danio rerio)
Host:	Rabbit
Clonality:	Polyclonal
Conjugate:	This INSIG1 antibody is un-conjugated
Application:	Western Blotting (WB)

## Product Details

Immunogen:	The immunogen is a synthetic peptide directed towards the middle region of human INSIG1
Sequence:	WWVPPCCGTA SAVIGLLYPC IDRHLGEPHK FKREWSVVMR CVAVFVGINH
Predicted Reactivity:	Cow: 100%, Dog: 100%, Goat: 100%, Guinea Pig: 93%, Horse: 100%, Human: 100%, Mouse: 100%, Pig: 100%, Rabbit: 100%, Rat: 100%, Sheep: 100%, Zebrafish: 87%
Characteristics:	This is a rabbit polyclonal antibody against INSIG1. It was validated on Western Blot using a cell lysate as a positive control.
Purification:	Affinity Purified

## Target Details

Target:	INSIG1
---------	--------

## Target Details

Alternative Name: INSIG1 ([INSIG1 Products](#))

**Background:** Oxysterols regulate cholesterol homeostasis through the liver X receptor (LXR)- and sterol regulatory element-binding protein (SREBP)-mediated signaling pathways. This gene is an insulin-induced gene. INSIG1 is an endoplasmic reticulum (ER) membrane protein that plays a critical role in regulating cholesterol concentrations in cells. INSIG1 binds to the sterol-sensing domains of SREBP cleavage-activating protein (SCAP) and HMG CoA reductase, and is essential for the sterol-mediated trafficking of the two proteins. The protein encoded by this gene is highly similar to the protein product encoded by gene INSIG1. Both INSIG1 protein and this protein are endoplasmic reticulum proteins that block the processing of sterol regulatory element binding proteins (SREBPs) by binding to SREBP cleavage-activating protein (SCAP), and thus prevent SCAP from escorting SREBPs to the Golgi. Publication Note: This RefSeq record includes a subset of the publications that are available for this gene. Please see the Entrez Gene record to access additional publications.

Alias Symbols: MGC26273, INSIG1

Protein Interaction Partner: RNF5, HMGCR, SCAP, SREBF1, RNF139, UBQLN1, UBQLN2, FAF2, ADRM1, PSMD14, BAG6, VCP, UBC, RPN1, PSMD13, PSMD12, PSMD11, PSMD4, PSMC6, PSMC5, PSMC3, PSMC2, PSMB3, PSMB1, PSMA7, PSMA2, LGALS7, JUP, INSIG1, HSPA8, HSPA6, HSPA5, HSPA1A, ENO1, DSP, AMFR, SREBF2,

Protein Size: 225

Molecular Weight: 25 kDa

Gene ID: 51141

NCBI Accession: [NM\\_016133](#), [NP\\_057217](#)

UniProt: [Q9Y5U4](#)

Pathways: [ER-Nucleus Signaling](#)

## Application Details

Application Notes: Optimal working dilutions should be determined experimentally by the investigator.

Comment: Antigen size: 225 AA

Restrictions: For Research Use only

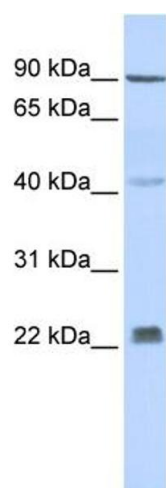
## Handling

Format: Liquid

Handling

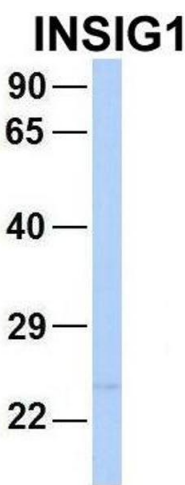
Concentration:	Lot specific
Buffer:	Liquid. Purified antibody supplied in 1x PBS buffer with 0.09 % (w/v) sodium azide and 2 % sucrose.
Preservative:	Sodium azide
Precaution of Use:	This product contains Sodium azide: a POISONOUS AND HAZARDOUS SUBSTANCE which should be handled by trained staff only.
Handling Advice:	Avoid repeated freeze-thaw cycles.
Storage:	-20 °C
Storage Comment:	For short term use, store at 2-8°C up to 1 week. For long term storage, store at -20°C in small aliquots to prevent freeze-thaw cycles.

Images



Western Blotting

**Image 1.** WB Suggested Anti-INSIG1 Antibody Titration: 0.2-1 ug/ml ELISA Titer: 1:1562500 Positive Control: Human Muscle



Western Blotting

**Image 2.** Host: Rabbit Target Name: WT1 Sample Type: 721\_B Antibody Dilution: 1.0ug/ml INSIG2 is supported by BioGPS gene expression data to be expressed in 721\_B