



[Go to Product page](#)

Datasheet for ABIN2778641  
**anti-MBD3 antibody (N-Term)**

2 Images

Overview

Quantity:	100 µL
Target:	MBD3
Binding Specificity:	N-Term
Reactivity:	Human, Mouse, Rat, Dog, Guinea Pig, Cow, Horse
Host:	Rabbit
Clonality:	Polyclonal
Conjugate:	This MBD3 antibody is un-conjugated
Application:	Western Blotting (WB)

Product Details

Immunogen:	The immunogen is a synthetic peptide directed towards the N terminal region of human MBD3
Sequence:	SKMNKSRQRV RYDSSNQVKG KPDLNTALPV RQTASIFKQP VTKITNHPSN
Predicted Reactivity:	Cow: 85%, Dog: 100%, Guinea Pig: 100%, Horse: 79%, Human: 100%, Mouse: 100%, Rat: 100%
Characteristics:	This is a rabbit polyclonal antibody against MBD3. It was validated on Western Blot using a cell lysate as a positive control.
Purification:	Affinity Purified

Target Details

Target:	MBD3
Alternative Name:	MBD3 ( <a href="#">MBD3 Products</a> )

## Target Details

---

**Background:** DNA methylation is the major modification of eukaryotic genomes and plays an essential role in mammalian development. Human proteins MECP2, MBD1, MBD2, MBD3, and MBD4 comprise a family of nuclear proteins related by the presence in each of a methyl-CpG binding domain (MBD). However, unlike the other family members, MBD3 is not capable of binding to methylated DNA. The predicted MBD3 protein shares 71 % and 94 % identity with MBD2 (isoform 1) and mouse Mbd3. MBD3 is a subunit of the NuRD, a multisubunit complex containing nucleosome remodeling and histone deacetylase activities. MBD3 mediates the association of metastasis-associated protein 2 (MTA2) with the core histone deacetylase complex. DNA methylation is the major modification of eukaryotic genomes and plays an essential role in mammalian development. Human proteins MECP2, MBD1, MBD2, MBD3, and MBD4 comprise a family of nuclear proteins related by the presence in each of a methyl-CpG binding domain (MBD). However, unlike the other family members, MBD3 is not capable of binding to methylated DNA. The predicted MBD3 protein shares 71 % and 94 % identity with MBD2 (isoform 1) and mouse Mbd3. MBD3 is a subunit of the NuRD, a multisubunit complex containing nucleosome remodeling and histone deacetylase activities. MBD3 mediates the association of metastasis-associated protein 2 (MTA2) with the core histone deacetylase complex. Publication Note: This RefSeq record includes a subset of the publications that are available for this gene. Please see the Entrez Gene record to access additional publications.

Alias Symbols: -

Protein Interaction Partner: SDCBP, KRT15, ICA1, GOLGA2, CEP76, GATAD2B, RCN3, TRIM54, ZNF277, CEP250, ZBTB16, UBC, RARA, KDM1A, HDAC2, HDAC1, MMS19, HIST3H3, GATAD2A, INO80, MTA2, BAZ1B, SMARCA5, RBBP7, RBBP4, HNRNPM, IGBP1, FUS, EWSR1, DDX3X, DDB1, CHD4, CHD3, TAB2, DNMT1, MTA1, NR

Protein Size: 291

---

Molecular Weight: 33 kDa

---

Gene ID: 53615

---

NCBI Accession: [NM\\_003926](#), [NP\\_003917](#)

---

UniProt: [O95983](#)

---

Pathways: [Chromatin Binding](#)

## Application Details

---

**Application Notes:** Optimal working dilutions should be determined experimentally by the investigator.

---

**Comment:** Antigen size: 291 AA

---

## Application Details

Restrictions: For Research Use only

## Handling

Format: Liquid

Concentration: Lot specific

Buffer: Liquid. Purified antibody supplied in 1x PBS buffer with 0.09 % (w/v) sodium azide and 2 % sucrose.

Preservative: Sodium azide

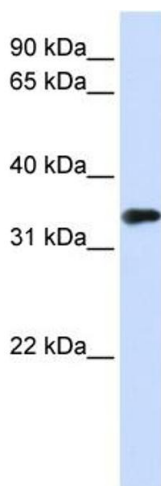
Precaution of Use: This product contains Sodium azide: a POISONOUS AND HAZARDOUS SUBSTANCE which should be handled by trained staff only.

Handling Advice: Avoid repeated freeze-thaw cycles.

Storage: -20 °C

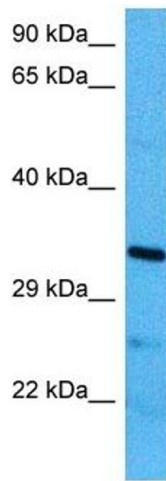
Storage Comment: For short term use, store at 2-8°C up to 1 week. For long term storage, store at -20°C in small aliquots to prevent freeze-thaw cycles.

## Images



### Western Blotting

**Image 1.** WB Suggested Anti-MBD3 Antibody Titration: 0.2-1 ug/ml ELISA Titer: 1:312500 Positive Control: Transfected 293T



### Western Blotting

**Image 2.** Host: Mouse Target Name: MBD3 Sample Tissue: Mouse Brain Antibody Dilution: 1ug/ml