

## Datasheet for ABIN2778644 anti-beta Actin antibody (Middle Region)

20 Images

2 Publications



[Go to Product page](#)

### Overview

Quantity:	100 µL
Target:	beta Actin (ACTB)
Binding Specificity:	Middle Region
Reactivity:	Human, Mouse, Rat, Pig, Cow, Sheep, Zebrafish (Danio rerio), Horse, Goat
Host:	Rabbit
Clonality:	Polyclonal
Conjugate:	This beta Actin antibody is un-conjugated
Application:	Western Blotting (WB), Immunohistochemistry (IHC)

### Product Details

Immunogen:	The immunogen is a synthetic peptide directed towards the middle region of Human ACTB
Sequence:	TMKIKIAPP ERKYSVWIGG SILASLSTFQ QMWISKQEYD ESGPSIVHRK
Predicted Reactivity:	Cow: 100%, Goat: 100%, Horse: 100%, Human: 100%, Mouse: 100%, Pig: 100%, Rat: 100%, Sheep: 100%, Zebrafish: 100%
Characteristics:	This is a rabbit polyclonal antibody against ACTB. It was validated on Western Blot.
Purification:	Affinity Purified

### Target Details

Target:	beta Actin (ACTB)
Alternative Name:	ACTB ( <a href="#">ACTB Products</a> )

## Target Details

Background:	<p>This protein is one of six different actin proteins. Actins are highly conserved proteins that are involved in cell motility, structure, and integrity. This actin is a major constituent of the contractile apparatus and one of the two nonmuscle cytoskeletal actins.</p> <p>Alias Symbols: BRWS1, PS1TP5BP1</p> <p>Protein Interaction Partner: FUS, DSTN, CAP2, CFL2, CFL1, ACTG1, ACTB, PA2G4, EHHADH, WDYHV1, HDAC6, ISG15, TP53, CEP250, TUBGCP2, TUBGCP3, VCP, UBC, TUBG1, SUMO2, LGALS3BP, AMOT, NEDD1, HAUS1, IVNS1ABP, STAU1, MDM2, CORO7, LGR4, ASB12, ASB9, ZBTB1, ERG, RPA3, RPA2, RPA1, CDKN2A, PAR</p> <p>Protein Size: 375</p>
Molecular Weight:	42 kDa
Gene ID:	60
NCBI Accession:	<a href="#">NM_001101</a> , <a href="#">NP_001092</a>
UniProt:	<a href="#">P60709</a>
Pathways:	<a href="#">Myometrial Relaxation and Contraction</a> , <a href="#">Cell-Cell Junction Organization</a> , <a href="#">Maintenance of Protein Location</a> , <a href="#">Phototransduction</a>

## Application Details

Application Notes:	Optimal working dilutions should be determined experimentally by the investigator.
Comment:	Antigen size: 375 AA
Restrictions:	For Research Use only

## Handling

Format:	Liquid
Concentration:	Lot specific
Buffer:	Liquid. Purified antibody supplied in 1x PBS buffer with 0.09 % (w/v) sodium azide and may contain up to 2 % sucrose.
Preservative:	Sodium azide
Precaution of Use:	This product contains Sodium azide: a POISONOUS AND HAZARDOUS SUBSTANCE which should be handled by trained staff only.
Handling Advice:	Avoid repeated freeze-thaw cycles.

## Handling

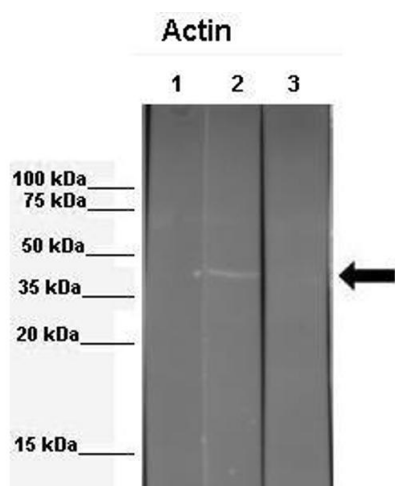
Storage: -20 °C

Storage Comment: For short term use, store at 2-8°C up to 1 week. For long term storage, store at -20°C in small aliquots to prevent freeze-thaw cycles.

## Publications

Product cited in: Sugatani, Nishitani, Yamakawa, Yoshinari, Sueyoshi, Negishi, Miwa: "Transcriptional regulation of human UGT1A1 gene expression: activated glucocorticoid receptor enhances constitutive androstane receptor/pregnane X receptor-mediated UDP-glucuronosyltransferase 1A1 regulation with glucocorticoid receptor-interacting protei" in: **Molecular pharmacology**, Vol. 67, Issue 3, pp. 845-55, (2005) ([PubMed](#)).

## Images



### Western Blotting

#### Image 1. WB Suggested Anti-ACTB Antibody

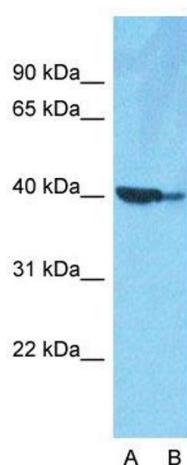
Positive Control: Lane 1: 341 µg mouse 3T3 ECM extract + blocking peptide, Lane 2: 041 µg mouse 3T3 ECM extract, Lane 3: 041 µg Echinococcus granulosus extract

Primary Antibody Dilution: 1:000

Secondary Antibody: Anti-rabbit-HRP Secondary

Antibody Dilution: 1:00,000

Submitted by: Anonymous



### Anti-ACTB Western Blot & Peptide Block Validation

Lot Number: QC10837

Lysate: HepG2 Cell

Lane A: Primary Antibody

Lane B: Primary Antibody + Blocking Peptide

Primary Antibody Concentration: 1.0µg/ml

Peptide Concentration: 5.0µg/ml

Lysate Quantity: 25µg/lane

Gel Concentration: 12%

### Western Blotting

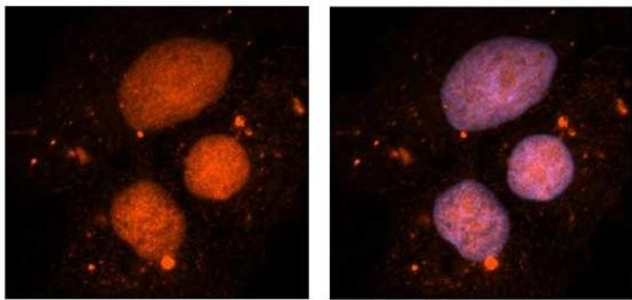
#### Image 2. Host: Rabbit

Target Name: ACTB

Sample Tissue: HepG2 Lane A: Primary Antibody Lane B: Primary Antibody + Blocking Peptide

Primary Antibody Concentration: 1 µg/mL Peptide Concentration: 5.0 µg/mL Lysate Quantity: 41 µg/lane/laneGel Concentration: 12 %

## ACTB



See Immunohistochemistry 1 Data and Customer Feedback tab for more information.

### Immunohistochemistry

**Image 3. Sample Type:** NT2 cells

**Red:** Antibody

**Blue:** DAPI

**Primary Dilution:** 1ug/50ul antibody

**Secondary Antibody:** Alexa goat anti-rabbit 594

**Image Submitted by:** Yuzhi Chen, University of Arkansas for Medical Sciences

Please check the [product details page](#) for more images. Overall 20 images are available for ABIN2778644.