

Datasheet for ABIN2778645
anti-GAPDH antibody (N-Term)[Go to Product page](#)

8 Images

2 Publications

Overview

Quantity:	100 µL
Target:	GAPDH
Binding Specificity:	N-Term
Reactivity:	Human, Mouse, Rat, Rabbit, Dog, Cow, Sheep, Horse, Goat, Guinea Pig
Host:	Rabbit
Clonality:	Polyclonal
Conjugate:	This GAPDH antibody is un-conjugated
Application:	Western Blotting (WB), Immunohistochemistry (IHC)

Product Details

Immunogen:	The immunogen is a synthetic peptide directed towards the N terminal region of human GAPDH
Sequence:	IDLNYMVYMF QYDSTHGKFH GTVKAENGL VINGNPITIF QERDPSKIKW
Predicted Reactivity:	Cow: 93%, Dog: 100%, Goat: 100%, Guinea Pig: 100%, Horse: 100%, Human: 100%, Mouse: 93%, Rabbit: 100%, Rat: 100%, Sheep: 100%
Characteristics:	This is a rabbit polyclonal antibody against GAPDH. It was validated on Western Blot using a cell lysate as a positive control.
Purification:	Affinity Purified

Target Details

Target:	GAPDH
---------	-------

Target Details

Alternative Name: [GAPDH \(GAPDH Products\)](#)

Background: GAPDH catalyzes an important energy-yielding step in carbohydrate metabolism, the reversible oxidative phosphorylation of glyceraldehyde-3-phosphate in the presence of inorganic phosphate and nicotinamide adenine dinucleotide (NAD). The enzyme exists as a tetramer of identical chains. Many pseudogenes similar to this locus are present in the human genome. Glyceraldehyde-3-phosphate dehydrogenase catalyzes an important energy-yielding step in carbohydrate metabolism, the reversible oxidative phosphorylation of glyceraldehyde-3-phosphate in the presence of inorganic phosphate and nicotinamide adenine dinucleotide (NAD). The enzyme exists as a tetramer of identical chains. A GAPD pseudogene has been mapped to Xp21-p11 and 15 GAPD-like loci have been identified. Publication Note: This RefSeq record includes a subset of the publications that are available for this gene. Please see the Entrez Gene record to access additional publications.

Alias Symbols: G3PD, GAPD, MGC88685

Protein Interaction Partner: FUS, HUWE1, UBC, SUMO2, SUMO3, STAU1, MDM2, GAPDH, ASB15, ASB16, RPA3, RPA2, RPA1, EED, SNCA, rev, HSPA9, HSPA1L, GAS7, TUBA1A, TUFM, RAP1GDS1, PPP5C, PPIB, YWHAG, TUBB, TUBA1C, PRPF40A, UBQLN1, DCPS, MAT2B, ACOT7, METAP2, FERMT2, GBP1, EEF1A1, TYMP, DFFA

Protein Size: 335

Molecular Weight: 36 kDa

Gene ID: 2597

NCBI Accession: [NM_002046](#), [NP_002037](#)

UniProt: [Q2TSD0](#)

Application Details

Application Notes: Optimal working dilutions should be determined experimentally by the investigator.

Comment: Antigen size: 335 AA

Restrictions: For Research Use only

Handling

Format: Liquid

Concentration: Lot specific

Buffer: Liquid. Purified antibody supplied in 1x PBS buffer with 0.09 % (w/v) sodium azide and 2 %

Handling

sucrose.

Preservative: Sodium azide

Precaution of Use: This product contains Sodium azide: a POISONOUS AND HAZARDOUS SUBSTANCE which should be handled by trained staff only.

Handling Advice: Avoid repeated freeze-thaw cycles.

Storage: -20 °C

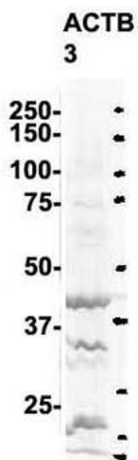
Storage Comment: For short term use, store at 2-8°C up to 1 week. For long term storage, store at -20°C in small aliquots to prevent freeze-thaw cycles.

Publications

Product cited in: Kalinec, Thein, Parsa, Yorgason, Luxford, Urrutia, Kalinec: "Acetaminophen and NAPQI are toxic to auditory cells via oxidative and endoplasmic reticulum stress-dependent pathways." in: **Hearing research**, Vol. 313, pp. 26-37, (2014) ([PubMed](#)).

Fu, Mukhamedova, Ip, DSouza, Henley, DiTommaso, Kesani, Ditiatkovski, Jones, Lane, Jennings, Smyth, Kile, Sviridov: "ABCA12 regulates ABCA1-dependent cholesterol efflux from macrophages and the development of atherosclerosis." in: **Cell metabolism**, Vol. 18, Issue 2, pp. 225-38, (2013) ([PubMed](#)).

Images



See Immunoblot 2 Data for more information.

Western Blotting

Image 1. Sample Type: 3. rat brain extract (80ug)

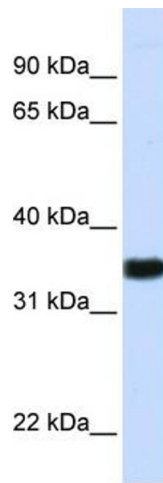
Primary Antibody Dilution: 2ug/ml

Secondary Antibody: IRDye 800CW goat anti-rabbit from Li-COR Bioscience

Secondary Antibody Dilution: 1: 20,000

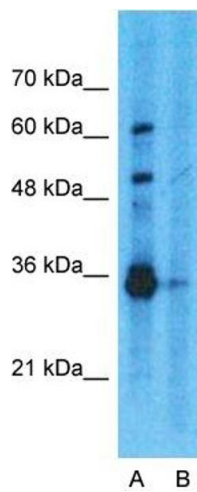
Image Submitted by: Yuzhi Chen

University of Arkansas for Medical Science



Western Blotting

Image 2. WB Suggested Anti-GAPDH Antibody Titration: 0.2-1 ug/ml ELISA Titer: 1:62500 Positive Control: Human brain



Western Blotting

Image 3. Host: Rabbit Target Name: GAPDH Sample Type: 293T Lane A: Primary Antibody Lane B: Primary Antibody + Blocking Peptide Primary Antibody Concentration: 1ug/ml Peptide Concentration: 5ug/ml Lysate Quantity: 25ug/lane/lane Gel Concentration: 0.12

Please check the [product details page](#) for more images. Overall 8 images are available for ABIN2778645.