



[Go to Product page](#)

Datasheet for ABIN2778647

anti-TUBB2A antibody (Middle Region)

3 Images

1 Publication

Overview

Quantity:	100 µL
Target:	TUBB2A
Binding Specificity:	Middle Region
Reactivity:	Human, Mouse, Rat, Sheep
Host:	Rabbit
Clonality:	Polyclonal
Conjugate:	This TUBB2A antibody is un-conjugated
Application:	Western Blotting (WB), Immunohistochemistry (IHC)

Product Details

Immunogen:	The immunogen is a synthetic peptide directed towards the middle region of human TUBB2A
Sequence:	AVNMVFPFRL HFFMPGFAPL TSRGSQQYRA LTVPELTQQM FDSKNMMAAC
Predicted Reactivity:	Human: 100%, Mouse: 100%, Rat: 100%, Sheep: 100%
Characteristics:	This is a rabbit polyclonal antibody against TUBB2A. It was validated on Western Blot using a cell lysate as a positive control.
Purification:	Affinity Purified

Target Details

Target:	TUBB2A
Alternative Name:	TUBB2A (TUBB2A Products)

Target Details

Background:	<p>TUBB2A belongs to the tubulin family. Tubulin is the major constituent of microtubules. It binds two moles of GTP, one at an exchangeable site on the beta chain and one at a non-exchangeable site on the alpha-chain.</p> <p>Alias Symbols: TUBB, TUBB2, dJ40E16.7</p> <p>Protein Interaction Partner: HUWE1, UBC, TPT1, TP53, EMD, SUMO2, CDC20, CEP76, FAM96B, TUBGCP4, TUBGCP2, NEDD8, ASB4, RNF2, rev, TUBA1C, NSFL1C, UBXN1, TWF2, TUBB4B, PLAA, PAPSS2, YWHAE, TUFM, TUBA4A, QARS, PFKM, PCBP1, HK1, CAPN2, TUBB8, TUBB, LATS2, UPF2, EGFR, ADRB2, SOX2, CD81, P</p> <p>Protein Size: 445</p>
Molecular Weight:	49 kDa
Gene ID:	7280
NCBI Accession:	NM_001069 , NP_001060
UniProt:	Q13885
Pathways:	Microtubule Dynamics , M Phase

Application Details

Application Notes:	Optimal working dilutions should be determined experimentally by the investigator.
Comment:	Antigen size: 445 AA
Restrictions:	For Research Use only

Handling

Format:	Liquid
Concentration:	Lot specific
Buffer:	Liquid. Purified antibody supplied in 1x PBS buffer with 0.09 % (w/v) sodium azide and 2 % sucrose.
Preservative:	Sodium azide
Precaution of Use:	This product contains Sodium azide: a POISONOUS AND HAZARDOUS SUBSTANCE which should be handled by trained staff only.
Handling Advice:	Avoid repeated freeze-thaw cycles.
Storage:	-20 °C

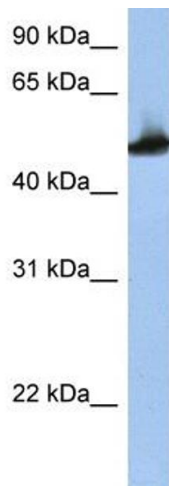
Handling

Storage Comment: For short term use, store at 2-8°C up to 1 week. For long term storage, store at -20°C in small aliquots to prevent freeze-thaw cycles.

Publications

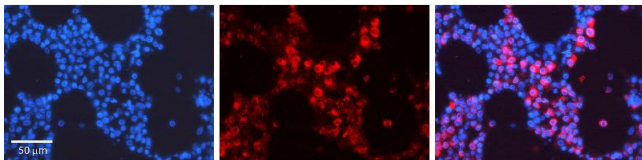
Product cited in: Sugatani, Nishitani, Yamakawa, Yoshinari, Sueyoshi, Negishi, Miwa: "Transcriptional regulation of human UGT1A1 gene expression: activated glucocorticoid receptor enhances constitutive androstane receptor/pregnane X receptor-mediated UDP-glucuronosyltransferase 1A1 regulation with glucocorticoid receptor-interacting protei" in: **Molecular pharmacology**, Vol. 67, Issue 3, pp. 845-55, (2005) ([PubMed](#)).

Images



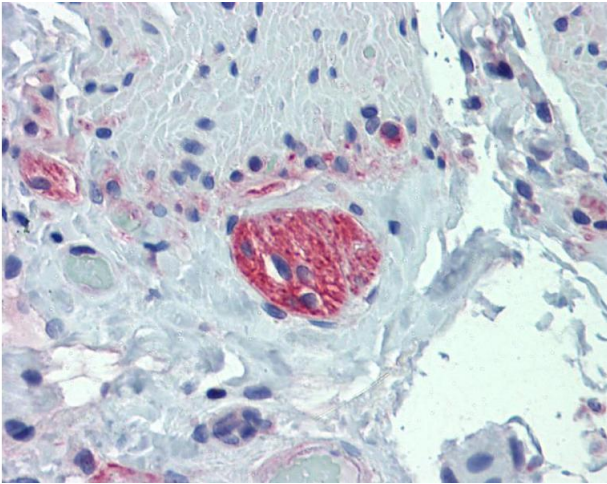
Western Blotting

Image 1. Host: Rabbit Target Name: TUBB2A Antibody Dilution: 1.0ug/ml Sample Type: HepG2 cell lysate TUBB2A is supported by BioGPS gene expression data to be expressed in HepG2



Immunohistochemistry

Image 2. Rabbit Anti-TUBB2A Antibody Catalog Number: ARP40177_P050 Formalin Fixed Paraffin Embedded Tissue: Human Bone Marrow Tissue Observed Staining: Cytoplasm Primary Antibody Concentration: 1:100 Other Working Concentrations: 1:600 Secondary Antibody: Donkey anti-Rabbit-Cy3 Secondary Antibody Concentration: 1:200 Magnification: 20X Exposure Time: 0.5 - 2.0 sec



Immunohistochemistry

Image 3. Small intestine, myenteric plexus